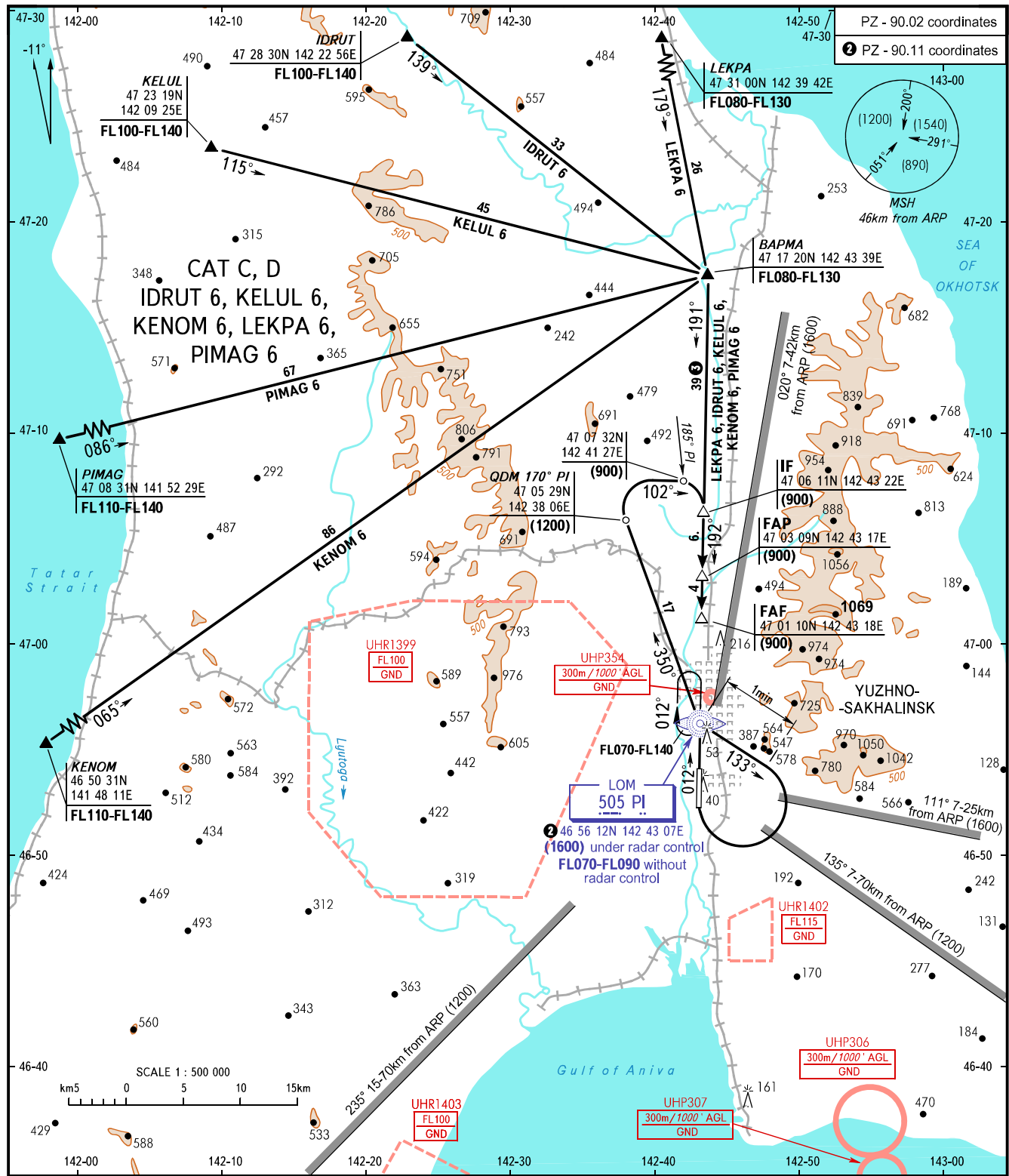


STANDARD ARRIVAL CHART  
INSTRUMENT (STAR) - ICAO

YUZHNO-SAKHALINSK, RUSSIA  
KHOMUTOVO  
RWY 19

TRANSITION  
LEVEL: ①

PZ - 90.02 coordinates  
② PZ - 90.11 coordinates



RADAR TOWER 120.600  
122.000

- ① TRANSITION LEVEL:  
 - FL070 when QFE is 758mm mercury column or above;  
 - FL080 when QFE is 731mm mercury column or above, but less than 758mm mercury column;  
 - FL090 when QFE is less than 731mm mercury column.  
 ② Distance to LOM PI.

BEARINGS AND TRACKS ARE MAGNETIC  
ALTITUDES, HEIGHTS AND ELEVATIONS IN METRES  
DISTANCES IN KILOMETRES

Alt set: -QFE(QNH on req);  
-mm(hPa on req).

**WARNING**  
AVBL when restricted area UHR1399 is active.