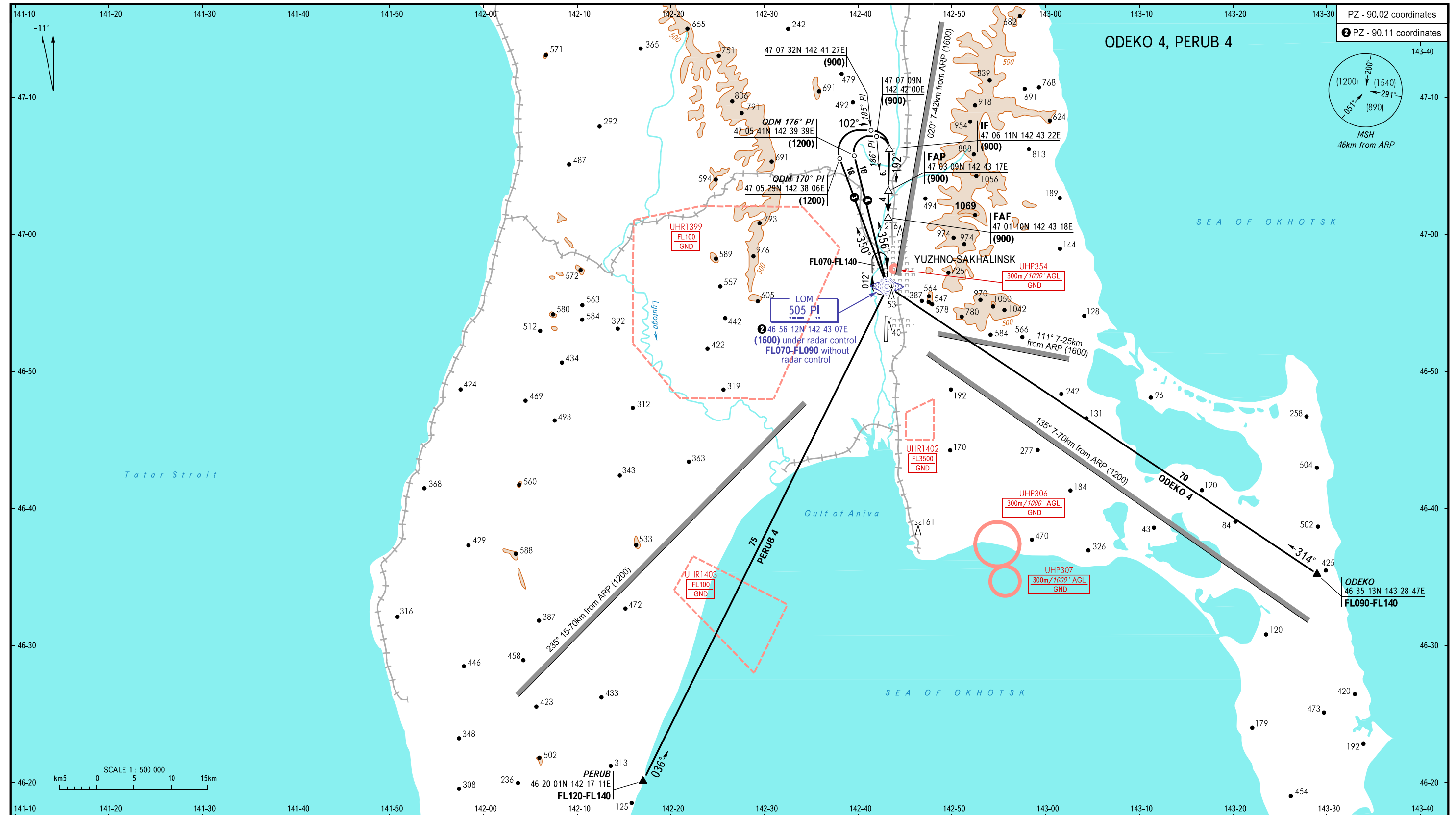


STANDARD ARRIVAL CHART
INSTRUMENT (STAR) - ICAO

YUZHNO-SAKHALINSK, RUSSIA
KHOMUTOVO
RWY 19

TRANSITION
LEVEL: ①

PZ - 90.02 coordinates
② PZ - 90.11 coordinates



RADAR 120.600
TOWER 122.000

③ CAT C, D ACFT
④ CAT A, B ACFT

① TRANSITION LEVEL:
- FL070 when QFE is 758mm mercury column or above;
- FL080 when QFE is 731mm mercury column or above,
but less than 758mm mercury column;
- FL090 when QFE is less than 731mm mercury column.
WARNING
STAR: PERUB 4 is AVBL when restricted area UHR1403 is not active.

BEARINGS AND TRACKS ARE MAGNETIC
ALTITUDES, HEIGHTS AND ELEVATIONS IN METRES
DISTANCES IN KILOMETRES
Alt set: -QFE(QNH on req);
-mm(hPa on req).

CHANGE: New chart