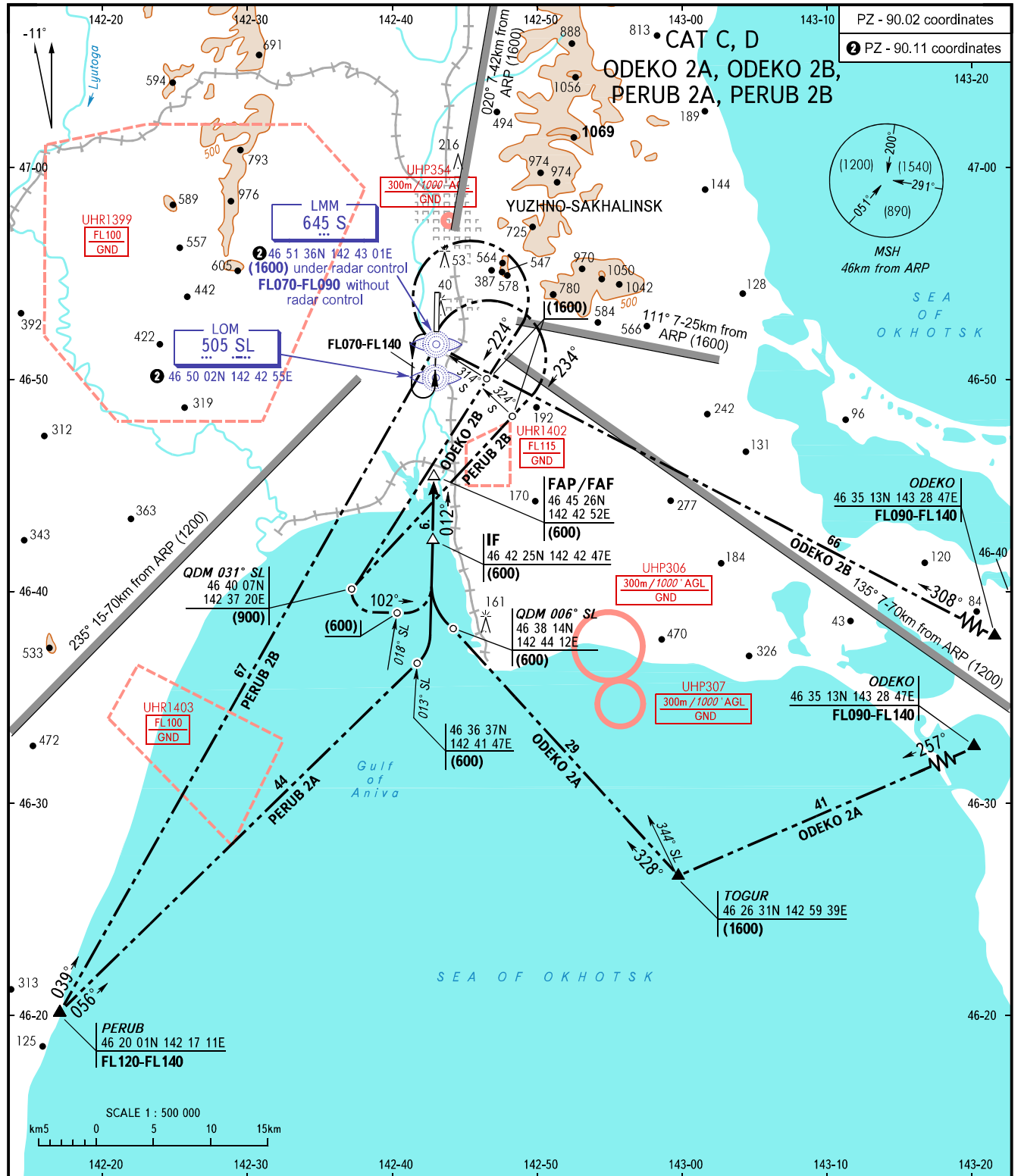


STANDARD ARRIVAL CHART  
INSTRUMENT (STAR) - ICAO

YUZHNO-SAKHALINSK, RUSSIA  
KHOMUTOVO  
RWY 01

TRANSITION  
LEVEL: **1**



<b>RADAR</b> <b>TOWER</b>	<b>120.600</b> <b>122.000</b>	<b>WARNING:</b> 1. STAR: PERUB 2B is AVBL when restricted areas UHR1402, UHR1403 are not active. 2. STAR ODEKO 2B, PERUB 2B are AVBL when restricted area UHR1399 is not active.	<b>1</b> TRANSITION LEVEL: - FL070 when QFE is 758mm mercury column or above; - FL080 when QFE is 731mm mercury column or above, but less than 758mm mercury column; - FL090 when QFE is less than 731mm mercury column.
------------------------------	----------------------------------	--	---

BEARINGS AND TRACKS ARE MAGNETIC ALTITUDES, HEIGHTS AND ELEVATIONS IN METRES DISTANCES IN KILOMETRES	Alt set: -QFE(QNH on req); -mm(hPa on req).
--	--

CHANGE: New chart