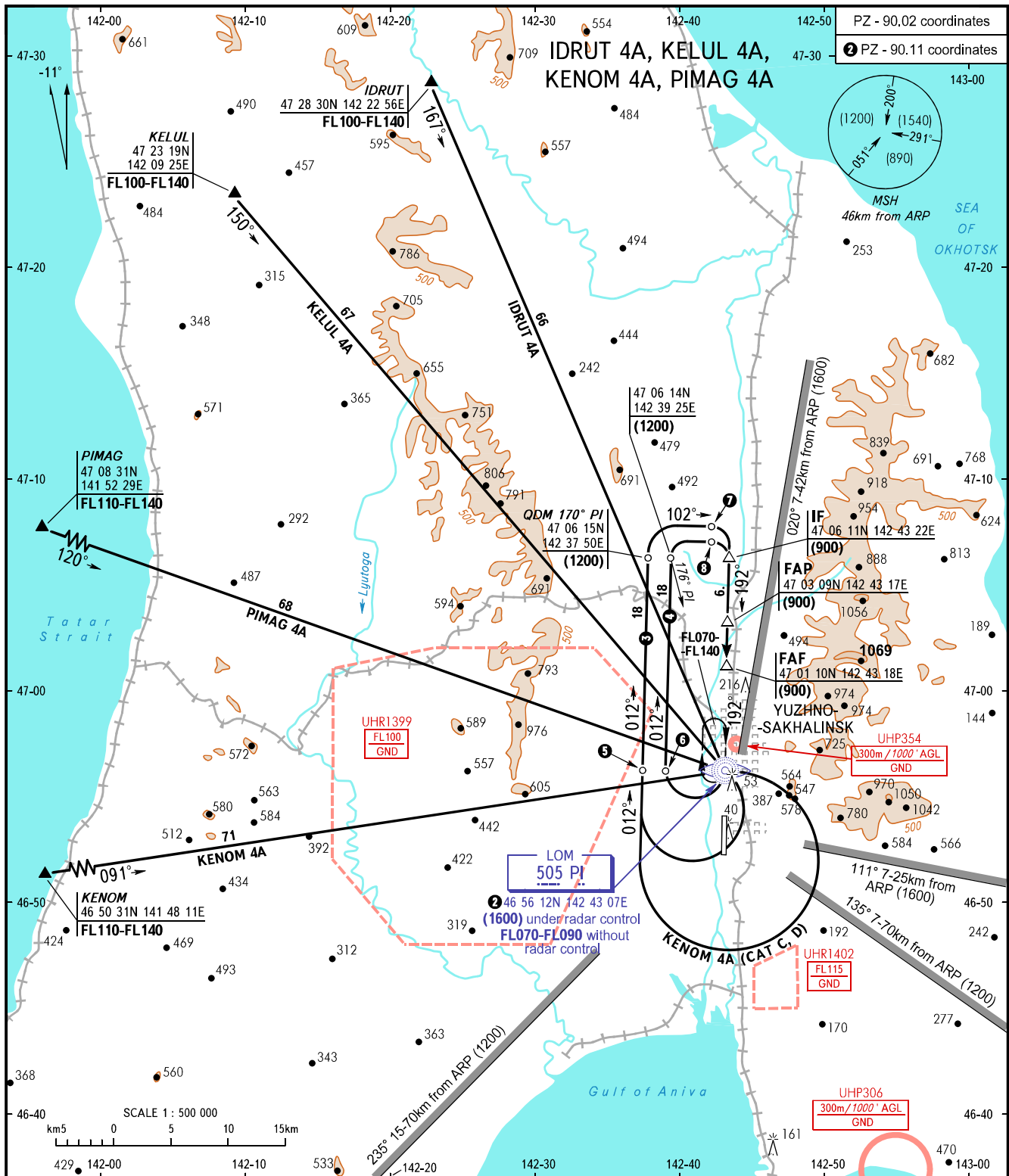


STANDARD ARRIVAL CHART
INSTRUMENT (STAR) - ICAO

YUZHNO-SAKHALINSK, RUSSIA
KHOMUTOVO
RWY 19

TRANSITION
LEVEL: ①



RADAR 120.600
TOWER 122.000

③ CAT C, D ACFT - is AVBL when the restricted area UHR1399 is not active.
④ CAT A, B ACFT

⑤ QDM 102° PI
46 56 16N 142 37 36E
(1500)

⑥ QDM 102° PI
46 56 15N 142 39 11E
(1500)

⑦ QDM 185° PI
47 07 32N 142 41 27E
(900)

⑧ QDM 186° PI
47 07 09N 142 42 00E
(900)

① TRANSITION LEVEL:
- FL070 when QFE is 758mm mercury column or above;
- FL080 when QFE is 731mm mercury column or above, but less than 758mm mercury column;
- FL090 when QFE is less than 731mm mercury column.

WARNING
STAR KENOM 4A, PIMAG 4A are available when the restricted area UHR1399 is not active.

BEARINGS AND TRACKS ARE MAGNETIC
ALTITUDES, HEIGHTS AND ELEVATIONS IN METRES
DISTANCES IN KILOMETRES

Alt set: -QFE(QNH on req);
-mm(hPa on req).

WARNING
STAR KENOM 4A, PIMAG 4A are available when the restricted area UHR1399 is not active.