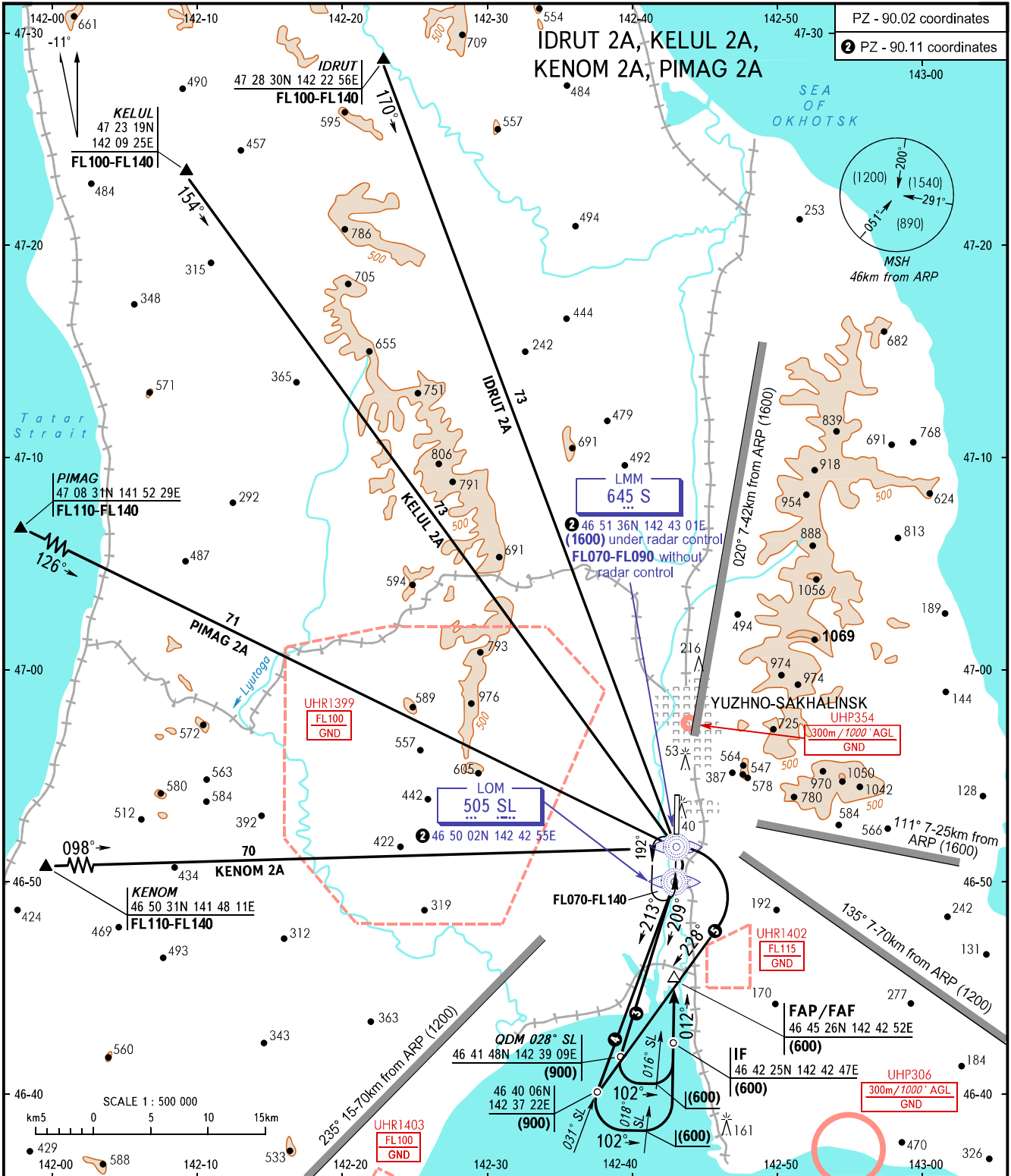


STANDARD ARRIVAL CHART
INSTRUMENT (STAR) - ICAO

YUZHNO-SAKHALINSK, RUSSIA
KHOMUTOVO
RWY 01

TRANSITION
LEVEL: ①



RADAR TOWER 120.600
122.000

- ③ CAT A, B ACFT
- ④ CAT C, D ACFT (IDRUT 2A, KELUL 2A)
- ⑤ CAT C, D ACFT (KENOM 2A, PIMAG 2A)

- ① TRANSITION LEVEL:
- FL070 when QFE is 758mm mercury column or above;
 - FL080 when QFE is 731mm mercury column or above, but less than 758mm mercury column;
 - FL090 when QFE is less than 731mm mercury column.

WARNING

STAR: KELUL 2A, KENOM 2A, PIMAG 2A are available when the restricted area UHR1399 is not active.

BEARINGS AND TRACKS ARE MAGNETIC
ALTITUDES, HEIGHTS AND ELEVATIONS IN METRES
DISTANCES IN KILOMETRES

Alt set: -QFE(QNH on req);
-mm(hPa on req).