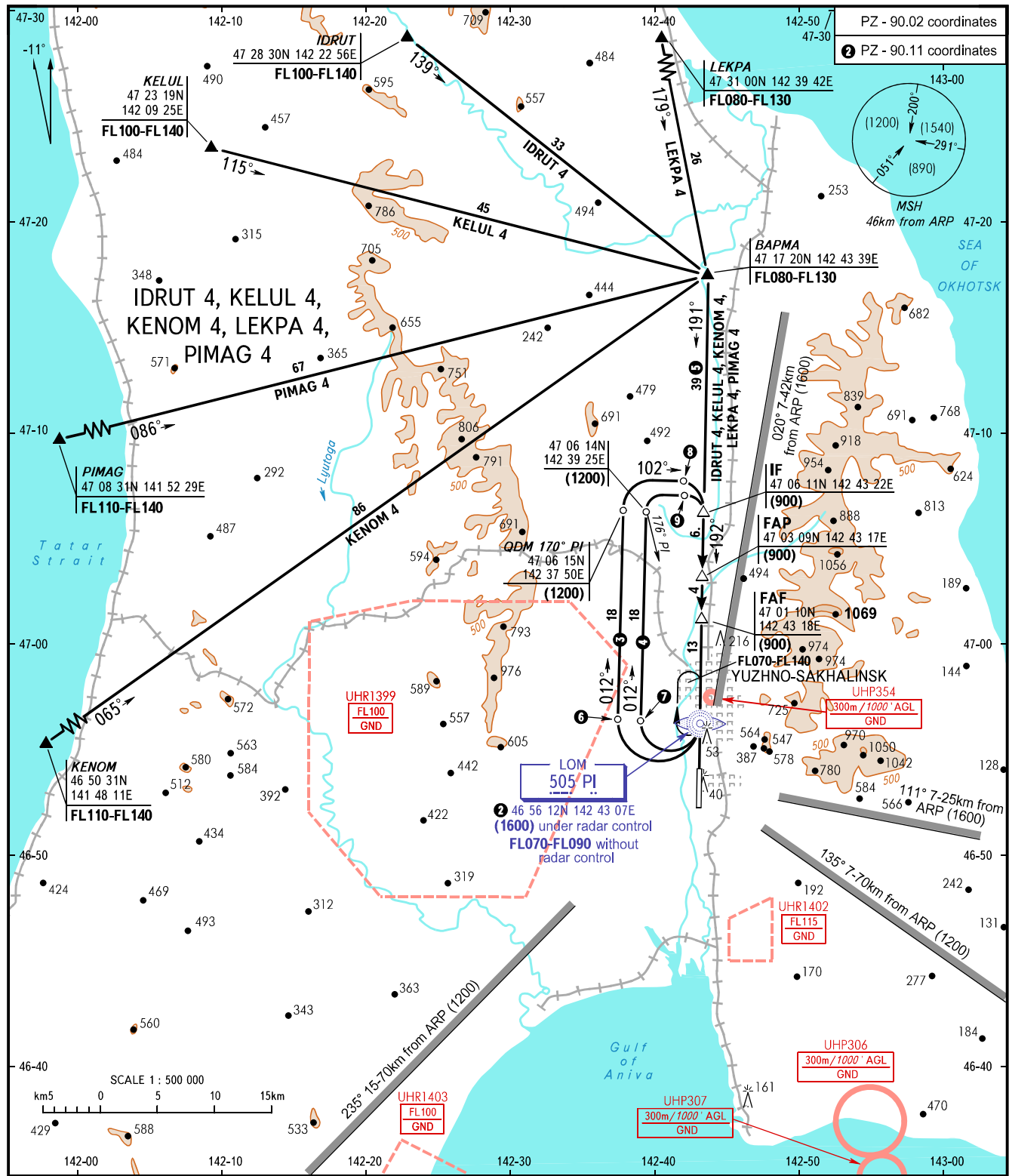


STANDARD ARRIVAL CHART
INSTRUMENT (STAR) - ICAO

YUZHNO-SAKHALINSK, RUSSIA
KHOMUTOVO
RWY 19

TRANSITION
LEVEL: ①



RADAR TOWER
120.600
122.000

⑥ QDM 102° PI 46 56 16N 142 37 36E (1500)	⑧ QDM 185° PI 47 07 32N 142 41 27E (900)
⑦ QDM 102° PI 46 56 15N 142 39 11E (1500)	⑨ QDM 186° PI 47 07 09N 142 42 00E (900)

① TRANSITION LEVEL:
- FL070 when QFE is 758mm mercury column or above;
- FL080 when QFE is 731mm mercury column or above, but less than 758mm mercury column;
- FL090 when QFE is less than 731mm mercury column.

③ CAT C, D ACFT
④ CAT A, B ACFT
⑤ Distance to LOM PI.

BEARINGS AND TRACKS ARE MAGNETIC
ALTITUDES, HEIGHTS AND ELEVATIONS IN METRES
DISTANCES IN KILOMETRES

All set: -QFE(QNH on req);
-mm(hPa on req).