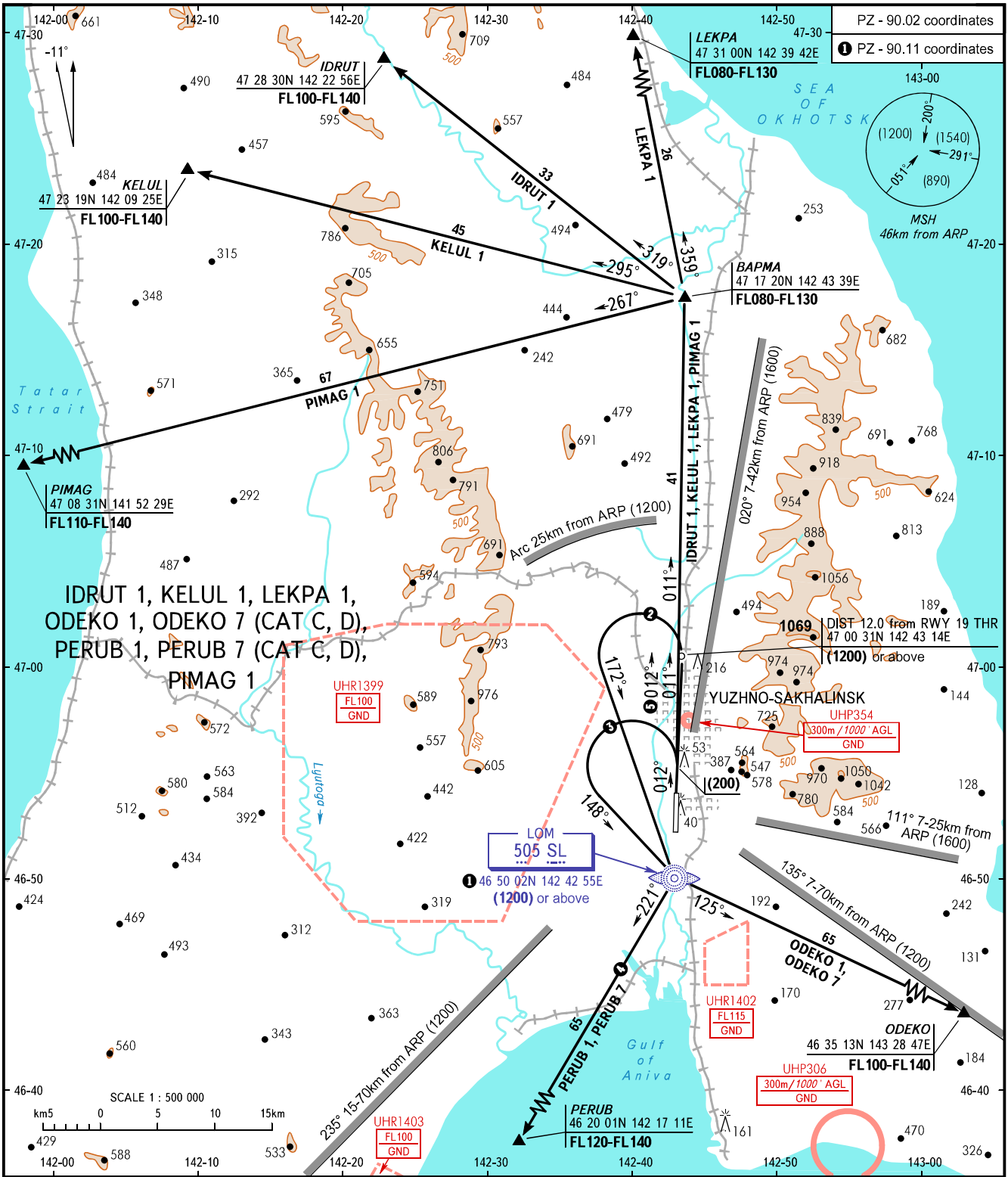


STANDARD DEPARTURE CHART
INSTRUMENT (SID) - ICAO

TRANSITION
HEIGHT: (1600)

YUZHNO-SAKHALINSK, RUSSIA
KHOMUTOVO
RWY 01



TOWER	122.000	<p>② SID ODEKO 7 (CAT C, D), PERUB 7 (CAT C, D) are AVBL when restricted area UHR1399 is active.</p> <p>③ SID ODEKO 1, PERUB 1</p> <p>④ SID PERUB 1, PERUB 7 (CAT C, D) are AVBL when restricted area UHR1403 is not active.</p> <p>⑤ SID ODEKO 7 (CAT C, D), PERUB 7 (CAT C, D).</p>
RADAR	120.600	

BEARINGS AND TRACKS ARE MAGNETIC
ALTITUDES, HEIGHTS AND ELEVATIONS IN METRES
DISTANCES IN KILOMETRES

Alt set: -QFE(QNH on req);
-mm(hPa on req).