

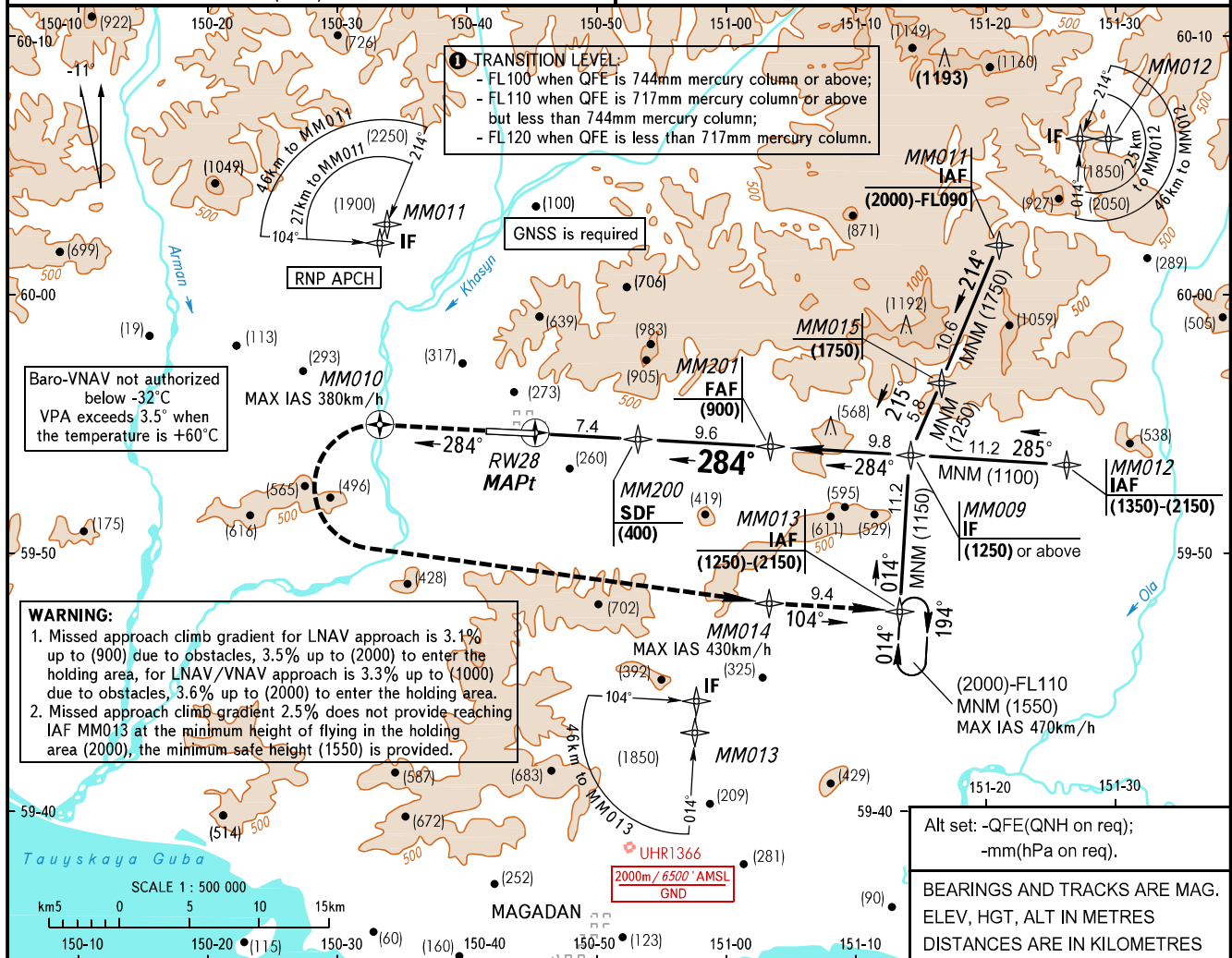
**INSTRUMENT
APPROACH
CHART - ICAO**

**MAGADAN, RUSSIA
SOKOL
RNAV RWY 28**

APPROACH **119.300**
TOWER **120.800**

TRANSITION LEVEL: **01**
TRANSITION HEIGHT: **(2500)**

AD ELEV: **175m**
THR ELEV: **175.0m**



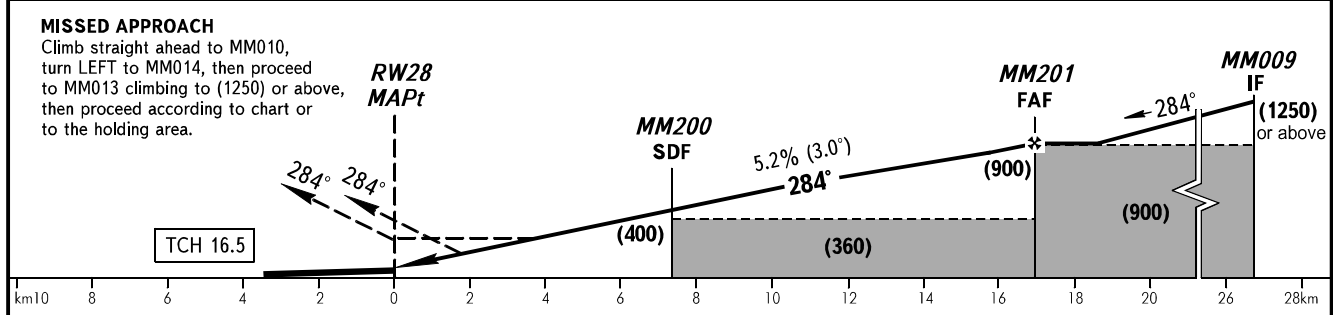
TRANSITION LEVEL:
- FL100 when QFE is 744mm mercury column or above;
- FL110 when QFE is 717mm mercury column or above but less than 744mm mercury column;
- FL120 when QFE is less than 717mm mercury column.

Baro-VNAV not authorized below -32°C
VPA exceeds 3.5° when the temperature is +60°C

WARNING:
1. Missed approach climb gradient for LNAV approach is 3.1% up to (900) due to obstacles, 3.5% up to (2000) to enter the holding area, for LNAV/VNAV approach is 3.3% up to (1000) due to obstacles, 3.6% up to (2000) to enter the holding area.
2. Missed approach climb gradient 2.5% does not provide reaching IAF MM013 at the minimum height of flying in the holding area (2000), the minimum safe height (1550) is provided.

Alt set: -QFE(QNH on req);
-mm(hPa on req).
BEARINGS AND TRACKS ARE MAG.
ELEV, HGT, ALT IN METRES
DISTANCES ARE IN KILOMETRES

DIST to RW28	2.0	4.0	6.0	8.0	10.0	12.0	14.0	16.0	17.0
HEIGHT	(120)	(225)	(330)	(435)	(535)	(640)	(745)	(850)	(900)



OCA(H)		A	B	C	D						
Straight-in Approach	LNAV/VNAV	3.3%	345(170)	345(170)	345(170)						
	LNAV/VNAV	2.5%	457(282)	460(285)	476(301)						
	LNAV	3.1%	425(250)	425(250)	425(250)						
	LNAV	2.5%	550(375)	550(375)	550(375)						
Circling			630(455)	840(665)	1045(870)						
GROUND SPEED		km/h	150	180	210	240	270	300	330	360	390
RATE OF DESCENT		m/s	2.2	2.6	3.1	3.5	3.9	4.4	4.8	5.2	5.7