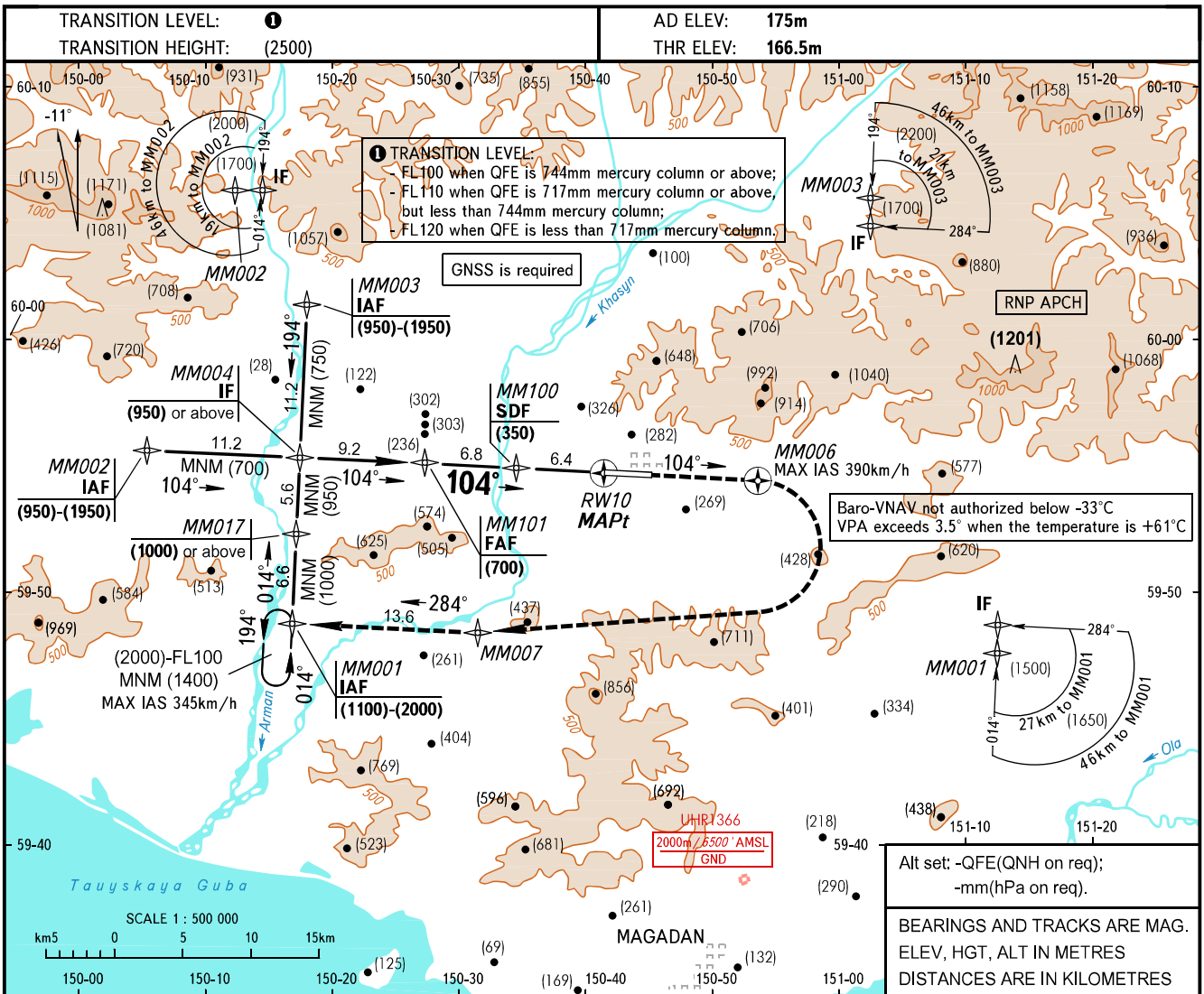


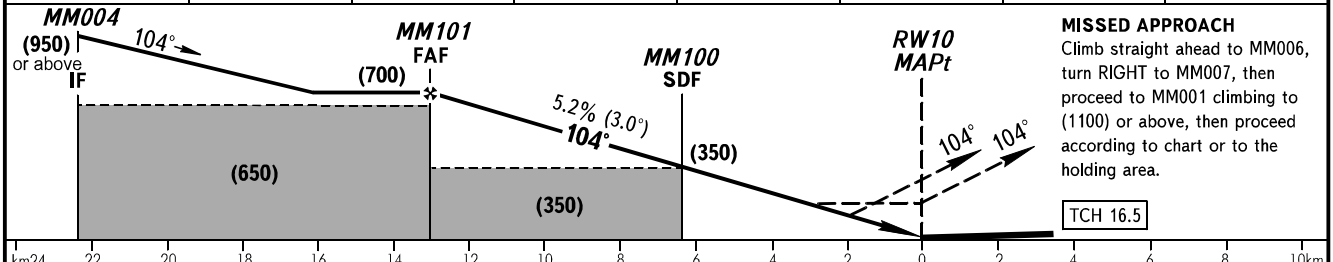
**INSTRUMENT
APPROACH
CHART - ICAO**

APPROACH **119.300**
TOWER **120.800**

MAGADAN, RUSSIA
SOKOL
RNAV RWY 10



DIST to RW10	13.2	12.0	10.0	8.0	6.0	4.0	2.0
HEIGHT	(700)	(640)	(535)	(435)	(330)	(225)	(120)



		OCA(H)				WARNING:					
		A	B	C	D	1. Missed approach climb gradient for LNAV approach is 3.9% up to (850) due to obstacles, 3.9% up to (1950) to enter the holding area, for LNAV/VNAV approach is 4.2% up to (850) due to obstacles, 4.2% up to (1800) to enter the holding area.					
Straight-in Approach	LNAV/VNAV	MNM climb gradient for missed APCH	4.2%	266(99)	269(103)	277(110)	287(120)	2. Missed approach climb gradient 2.5% does not provide reaching IAF MM001 at the minimum height of proceeding in the holding area (2000), the minimum safe height (1400) is provided.			
	LNAV/VNAV		2.5%	472(306)	475(309)	481(315)	490(323)	3. Turbulence occurs at height of (1100) during missed approach procedure due to terrain relief.			
	LNAV		3.9%	370(200)	370(200)	370(200)	370(200)				
	LNAV		2.5%	595(430)	595(430)	595(430)	595(430)				
Circling			630(455)	840(665)	1045(870)	1325(1150)					

Visual manoeuvring to the North of AD is PROHIBITED. MAPt at RW10. Timing not authorized.

GROUND SPEED	km/h	150	180	210	240	270	300	330	360	390
RATE OF DESCENT	m/s	2.2	2.6	3.1	3.5	3.9	4.4	4.8	5.2	5.7

CHANGE: New chart