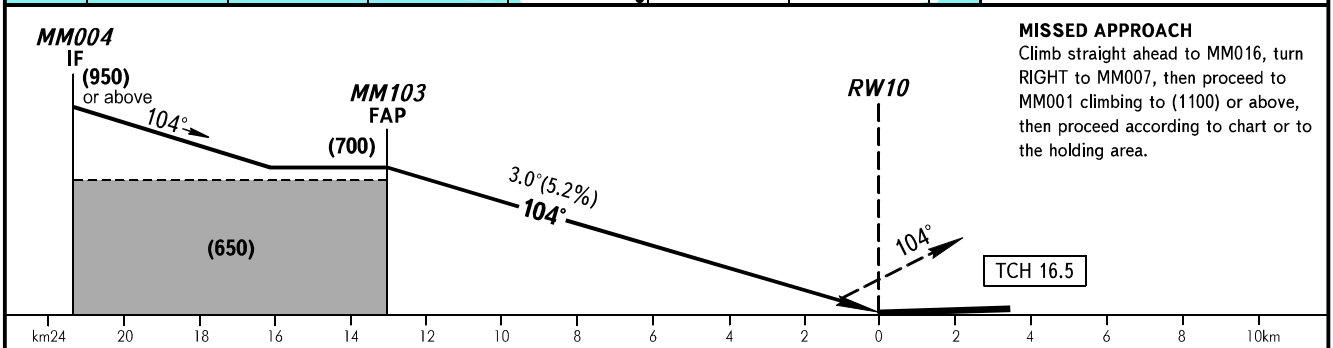
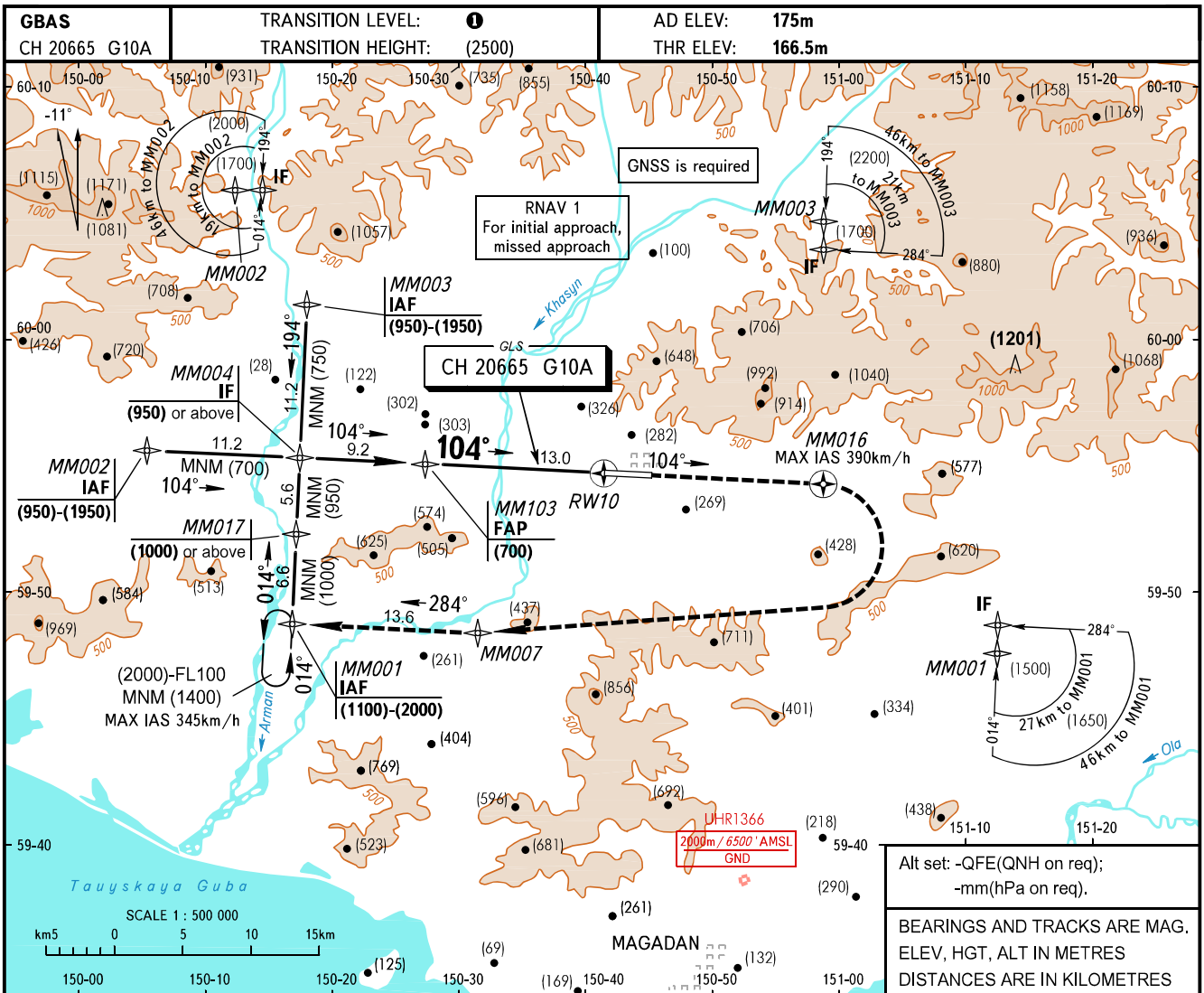


**INSTRUMENT  
APPROACH  
CHART - ICAO**

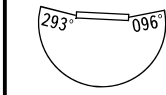
APPROACH **119.300**  
TOWER **120.800**

**MAGADAN, RUSSIA**  
SOKOL  
GLS RWY 10



OCA(H)		A	B	C	D	
Straight-in Approach	MNM climb gradient for missed APCH	<b>4.0%</b>	213(47)	216(50)	219(53)	223(56)
		<b>2.5%</b>	358(192)	362(195)	364(198)	367(201)
Circling			630(455)	840(665)	1045(870)	1325(1150)

- TRANSITION LEVEL:**
- FL100 when QFE is 744mm mercury column or above;
  - FL110 when QFE is 717mm mercury column or above, but less than 744mm mercury column;
  - FL120 when QFE is less than 717mm mercury column.
- WARNING:**
1. Missed approach climb gradient is 4.0% up to (600) due to obstacles, 4.0% up to (1450) to enter the holding area.
  2. Missed approach climb gradient 2.5% does not provide reaching IAF MM001 at the minimum height of proceeding in the holding area (2000), minimum safe height (1400) is provided.
  3. Turbulence occurs at height of (1100) during missed approach procedure due to terrain relief.



Visual manoeuvring to the North of AD is PROHIBITED.

GROUND SPEED	km/h	150	180	210	240	270	300	330	360	390
RATE OF DESCENT	m/s	2.2	2.6	3.1	3.5	3.9	4.4	4.8	5.2	5.7

CHANGE: New chart