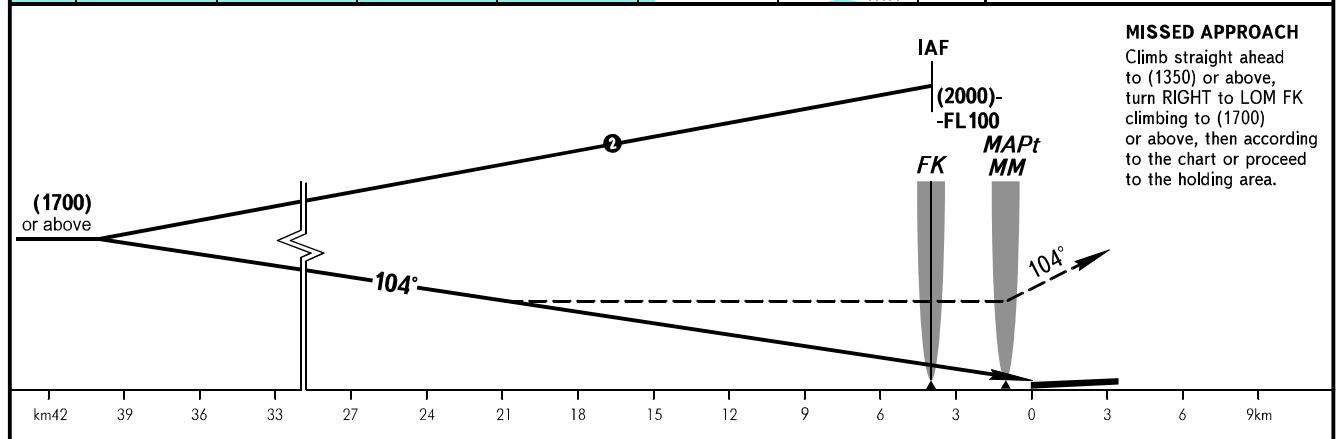
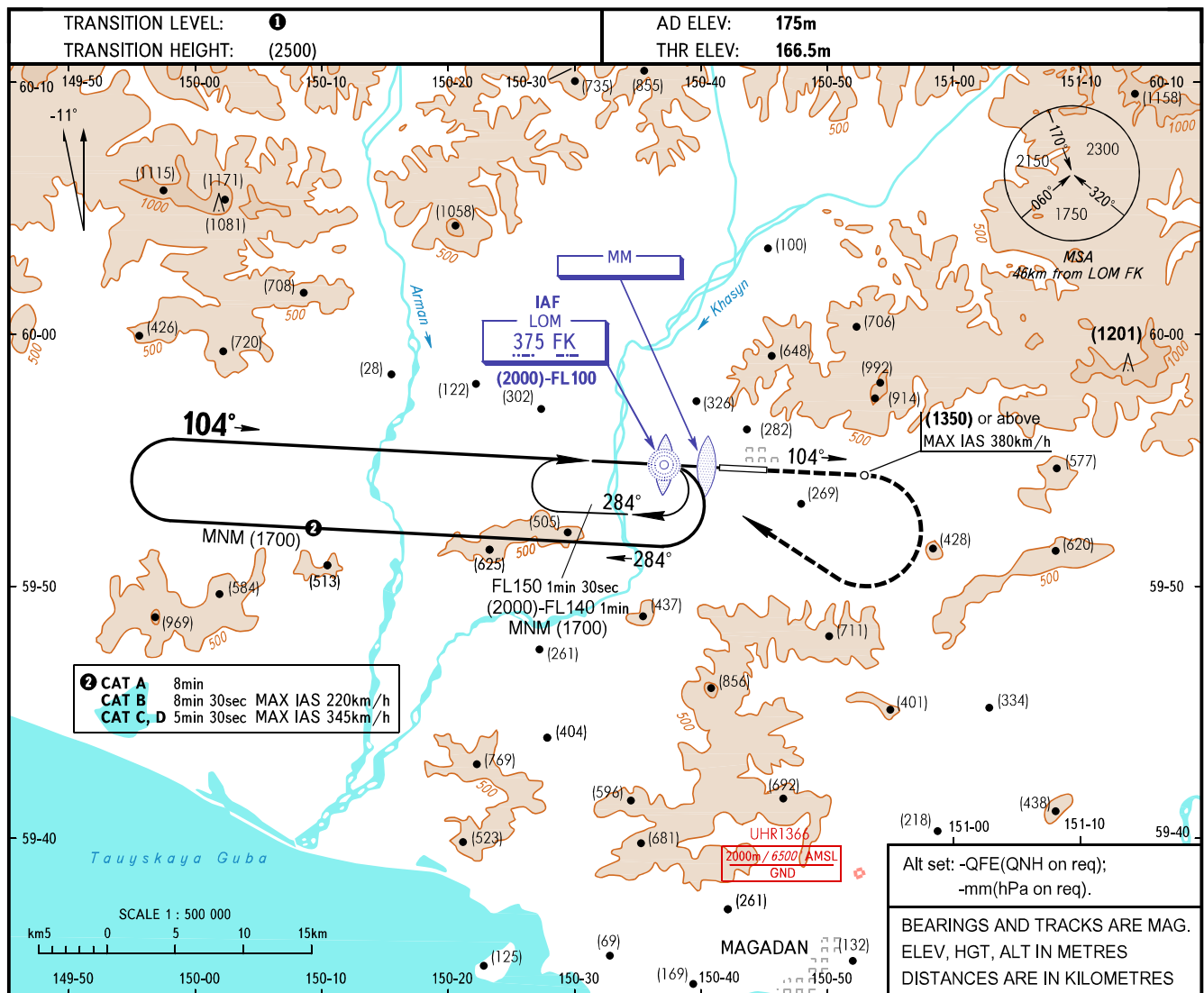


INSTRUMENT
APPROACH
CHART - ICAO

MAGADAN, RUSSIA
SOKOL
NDB A RWY 10

APPROACH **119.300**
TOWER **120.800**

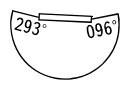


MISSED APPROACH
Climb straight ahead to (1350) or above, turn RIGHT to LOM FK climbing to (1700) or above, then according to the chart or proceed to the holding area.

OCA(H)	A	B	C	D
Straight-in Approach	1120(950)	1225(1060)	1225(1060)	1225(1060)
Circling	1120(950)	1225(1060)	1225(1060)	1325(1150)

① TRANSITION LEVEL:
- FL100 when QFE is 744mm mercury column or above;
- FL110 when QFE is 717mm mercury column or above, but less than 744mm mercury column;
- FL120 when QFE is less than 717mm mercury column.

WARNING:
1. Turn before MAPt is PROHIBITED.
2. Turbulence occurs at height of (1100) during missed approach procedure due to terrain relief.
3. MAPt at MM. Timing not authorized for defining MAPt.



Visual manoeuvring to the North of AD is PROHIBITED.

CHANGE: New chart