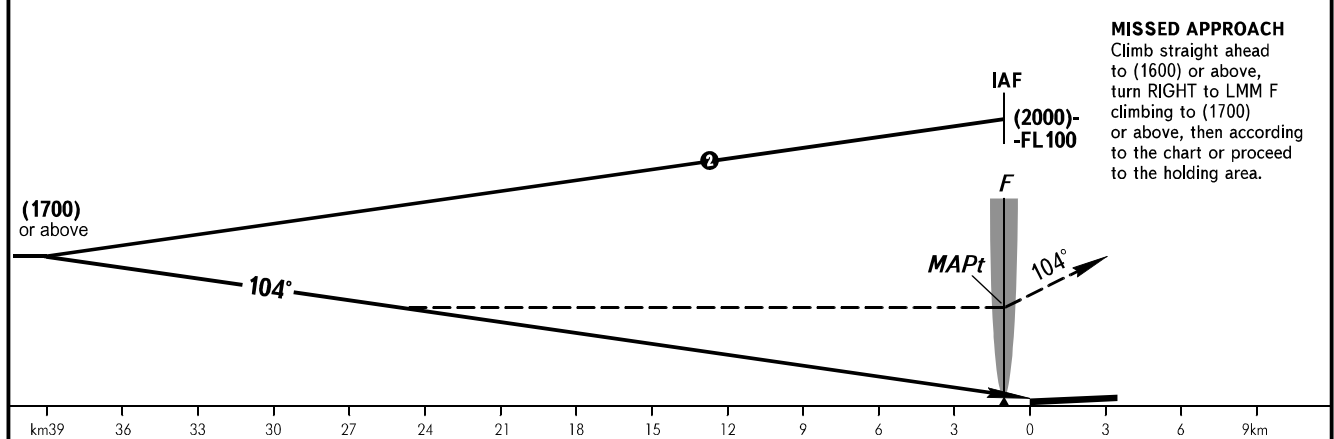
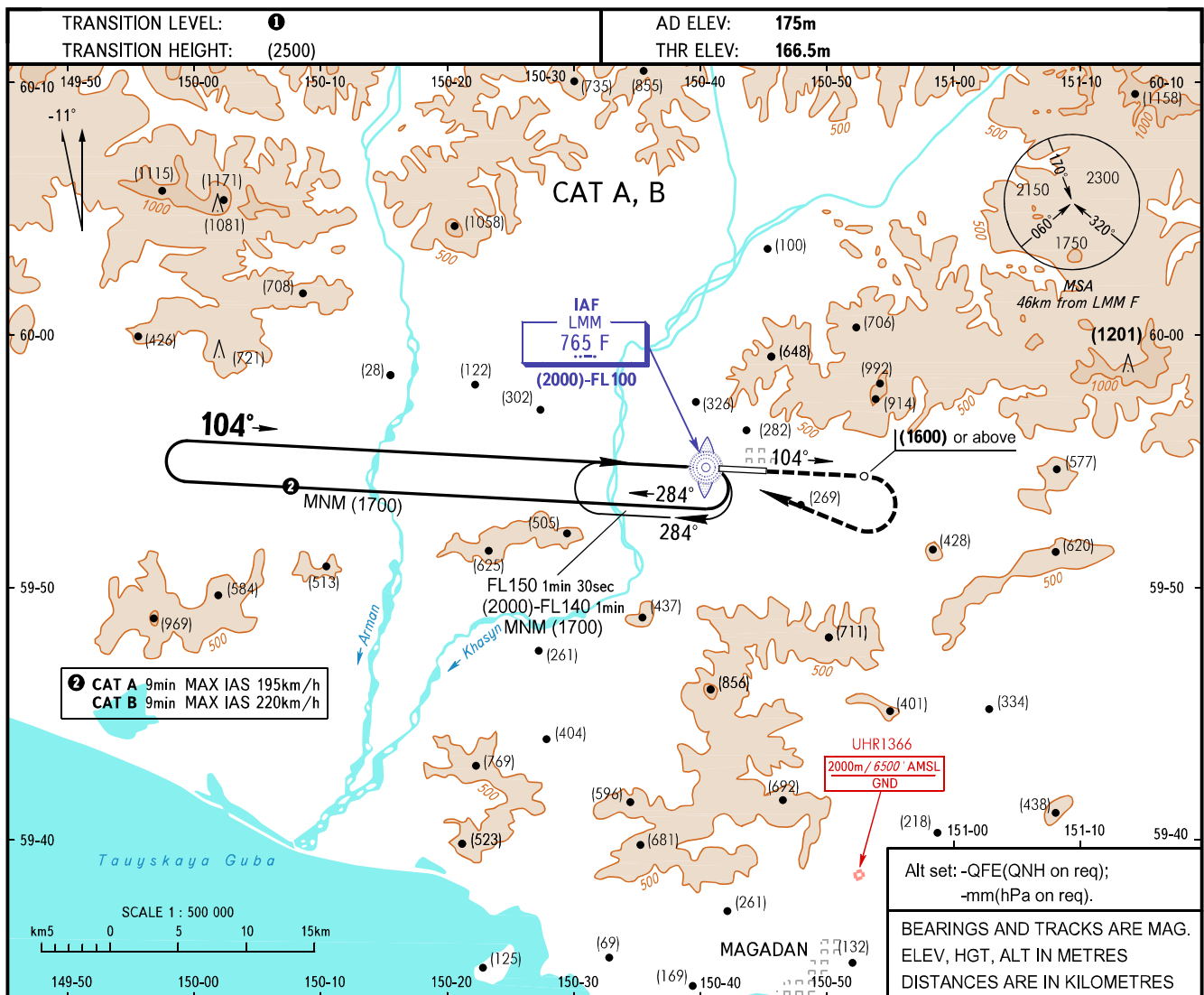


**INSTRUMENT  
APPROACH  
CHART - ICAO**

APPROACH **119.300**  
TOWER **120.800**

**MAGADAN, RUSSIA**  
SOKOL  
NDB U RWY 10



OCA(H)	A	B	C	D
Straight-in Approach	1235(1070)	1235(1070)		
Circling	1235(1070)	1235(1070)		

**1** TRANSITION LEVEL:  
 - FL100 when QFE is 744mm mercury column or above;  
 - FL110 when QFE is 717mm mercury column or above, but less than 744mm mercury column;  
 - FL120 when QFE is less than 717mm mercury column.

Visual manoeuvring to the North of AD is PROHIBITED.

**WARNING:**  
 1. Turn before MAPt is PROHIBITED.  
 2. Turbulence occurs at height of (1100) during missed approach procedure due to terrain relief.  
 3. MAPt at LMM F. Timing not authorized for defining MAPt.