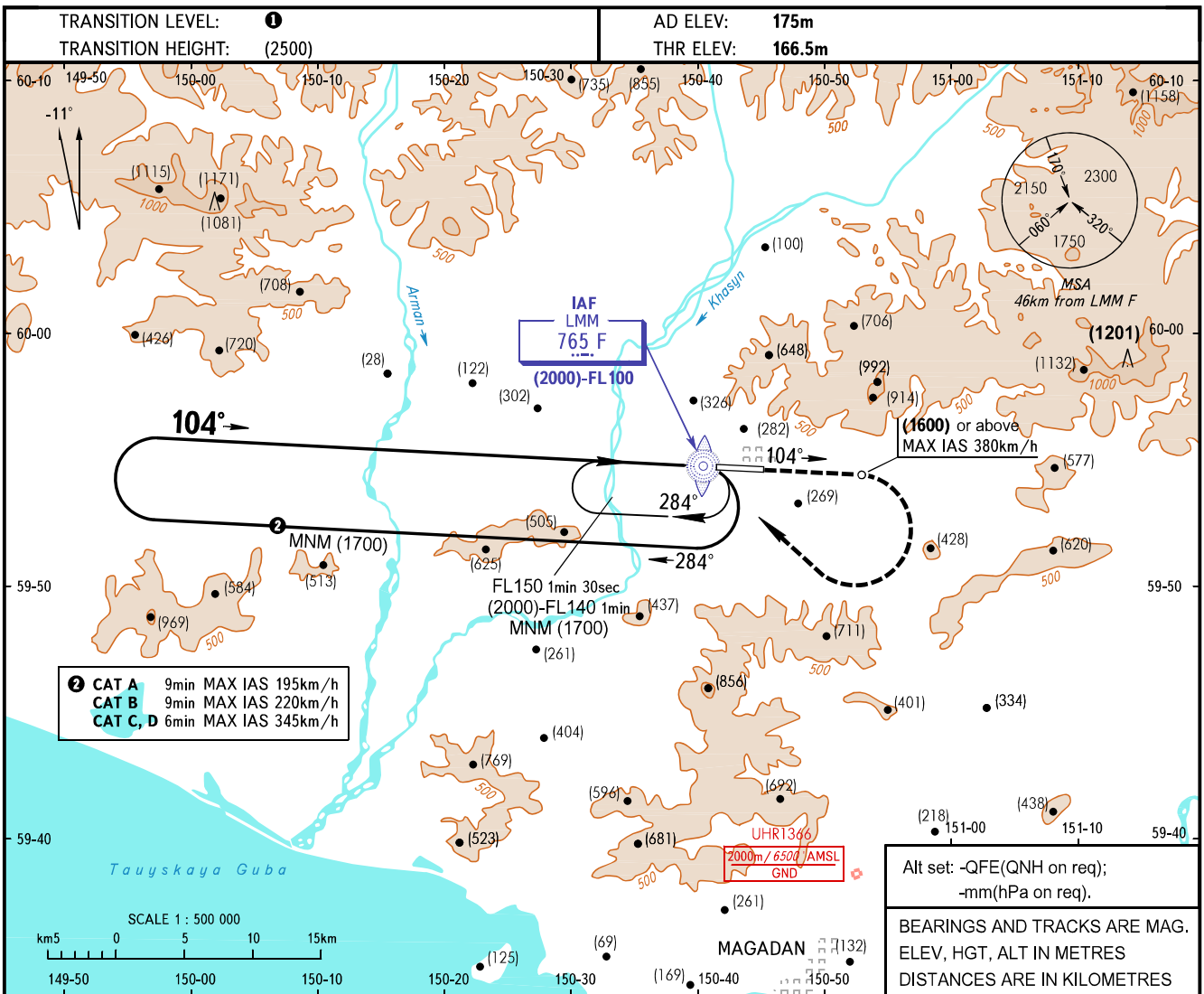


**INSTRUMENT
APPROACH
CHART - ICAO**

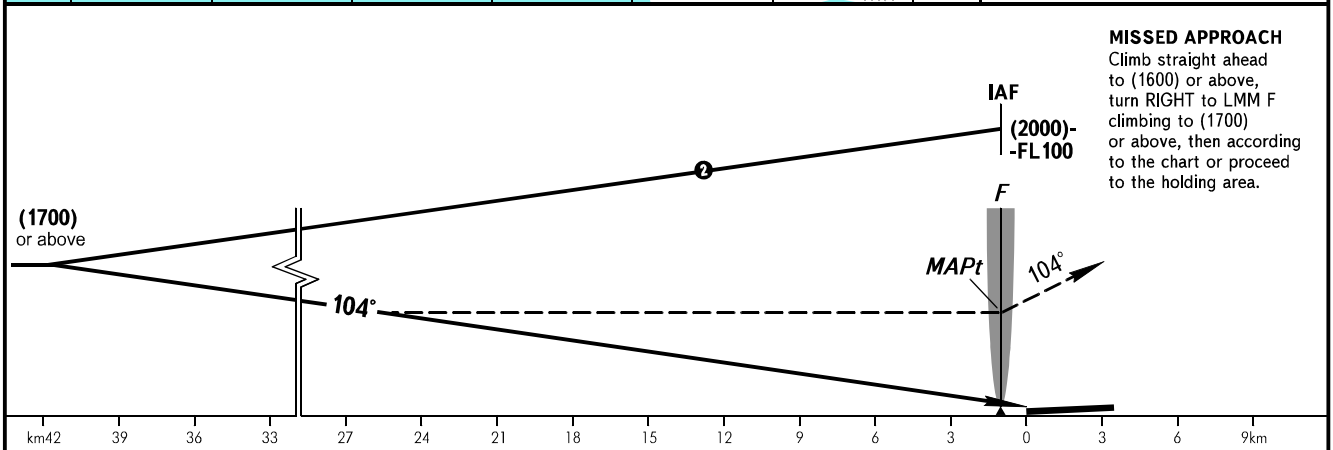
**MAGADAN, RUSSIA
SOKOL
NDB V RWY 10**

APPROACH **119.300**
TOWER **120.800**



② CAT A 9min MAX IAS 195km/h
CAT B 9min MAX IAS 220km/h
CAT C, D 6min MAX IAS 345km/h

Alt set: -QFE(QNH on req);
-mm(hPa on req).
BEARINGS AND TRACKS ARE MAG.
ELEV, HGT, ALT IN METRES
DISTANCES ARE IN KILOMETRES



MISSED APPROACH
Climb straight ahead to (1600) or above, turn RIGHT to LMM F climbing to (1700) or above, then according to the chart or proceed to the holding area.

OCA(H)	A	B	C	D
Straight-in Approach	1235(1070)	1235(1070)	1235(1070)	1235(1070)
Circling	1235(1070)	1235(1070)	1235(1070)	1325(1150)

① TRANSITION LEVEL:
- FL100 when QFE is 744mm mercury column or above;
- FL110 when QFE is 717mm mercury column or above, but less than 744mm mercury column;
- FL120 when QFE is less than 717mm mercury column.

WARNING:
1. Turn before MAPt is PROHIBITED.
2. Turbulence occurs at height of (1100) during missed approach procedure due to terrain relief.
3. MAPt at LMM F. Timing not authorized for defining MAPt.

Visual manoeuvring to the North of AD is PROHIBITED.

CHANGE: New chart