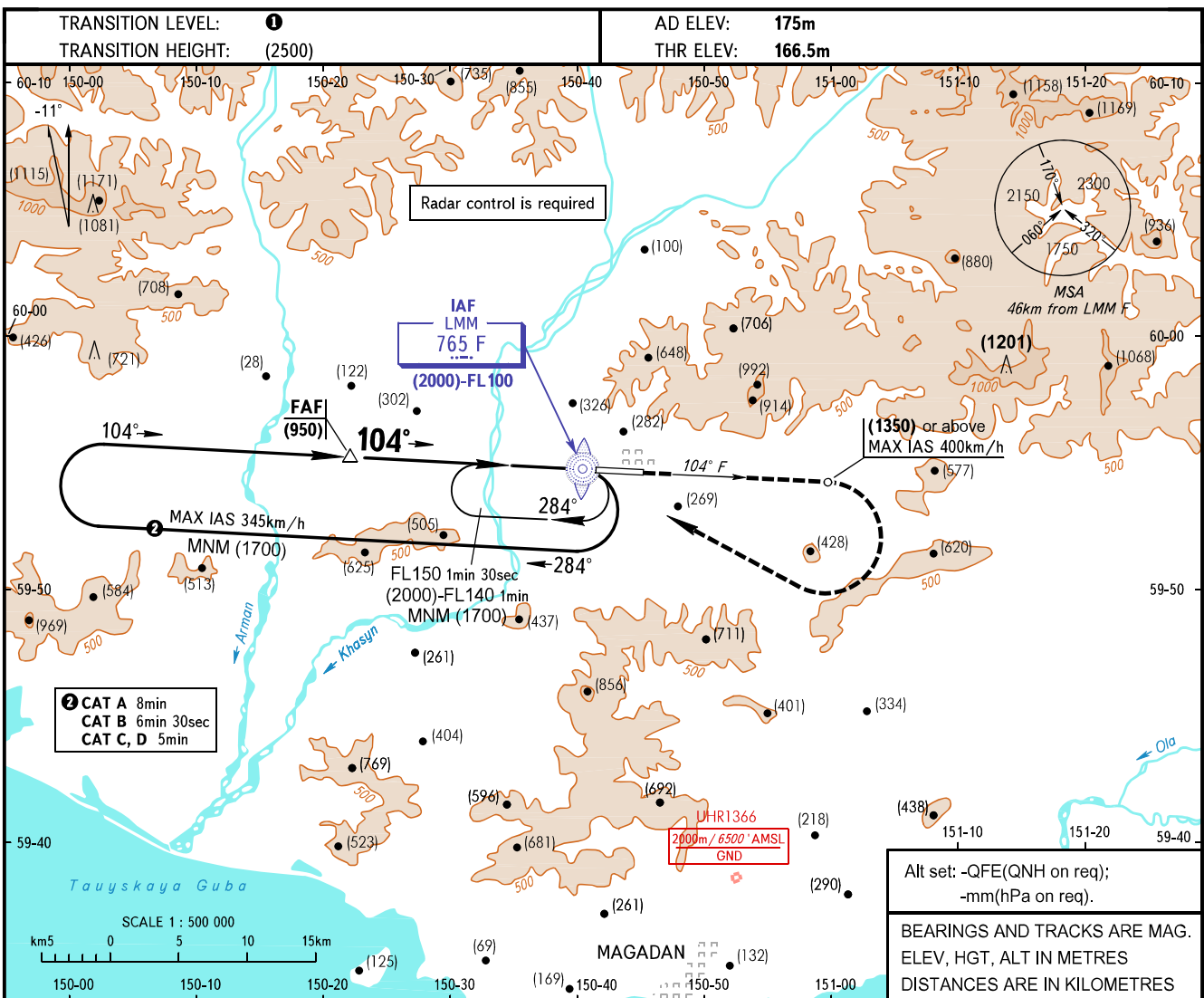


**INSTRUMENT
APPROACH
CHART - ICAO**

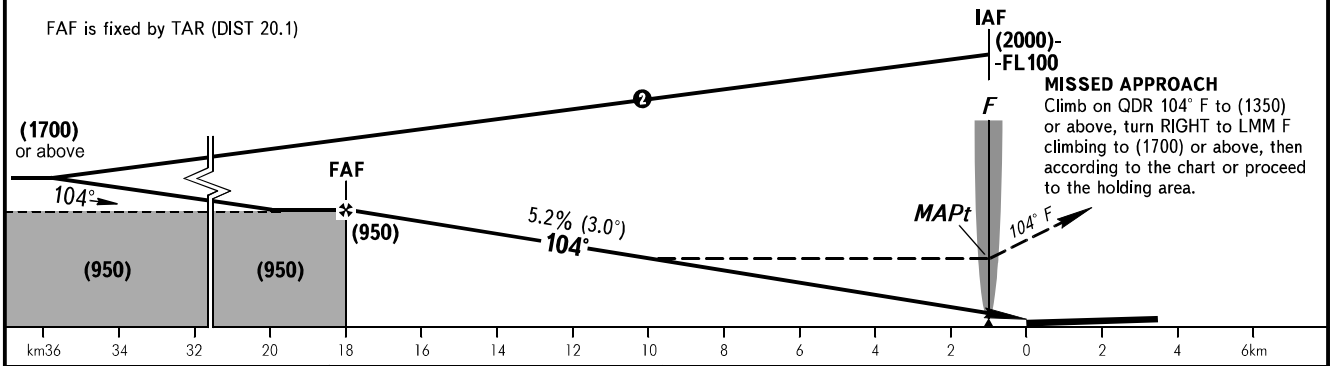
**MAGADAN, RUSSIA
SOKOL
NDB X RWY 10**

APPROACH **119.300**
TOWER **120.800**



② CAT A 8min
CAT B 6min 30sec
CAT C, D 5min

Alt set: -QFE(QNH on req);
-mm(hPa on req).
BEARINGS AND TRACKS ARE MAG.
ELEV, HGT, ALT IN METRES
DISTANCES ARE IN KILOMETRES



OCA(H)		A	B	C	D
Straight-in Approach		690(525)	690(525)	690(525)	690(525)
	Circling	690(525)	840(665)	1045(870)	1325(1150)

GROUND SPEED	km/h	150	180	210	240	270	300	330	360	390
RATE OF DESCENT	m/s	2.2	2.6	3.1	3.5	3.9	4.4	4.8	5.2	5.7

① TRANSITION LEVEL:
- FL100 when QFE is 744mm mercury column or above;
- FL110 when QFE is 717mm mercury column or above, but less than 744mm mercury column;
- FL120 when QFE is less than 717mm mercury column.

WARNING:
1. Turn before MAPt is PROHIBITED.
2. Turbulence occurs at height of (1100) during missed approach procedure due to terrain relief.
3. MAPt at LMM F. Timing not authorized for defining MAPt.

Visual manoeuvring to the North of AD is PROHIBITED.

CHANGE: New chart