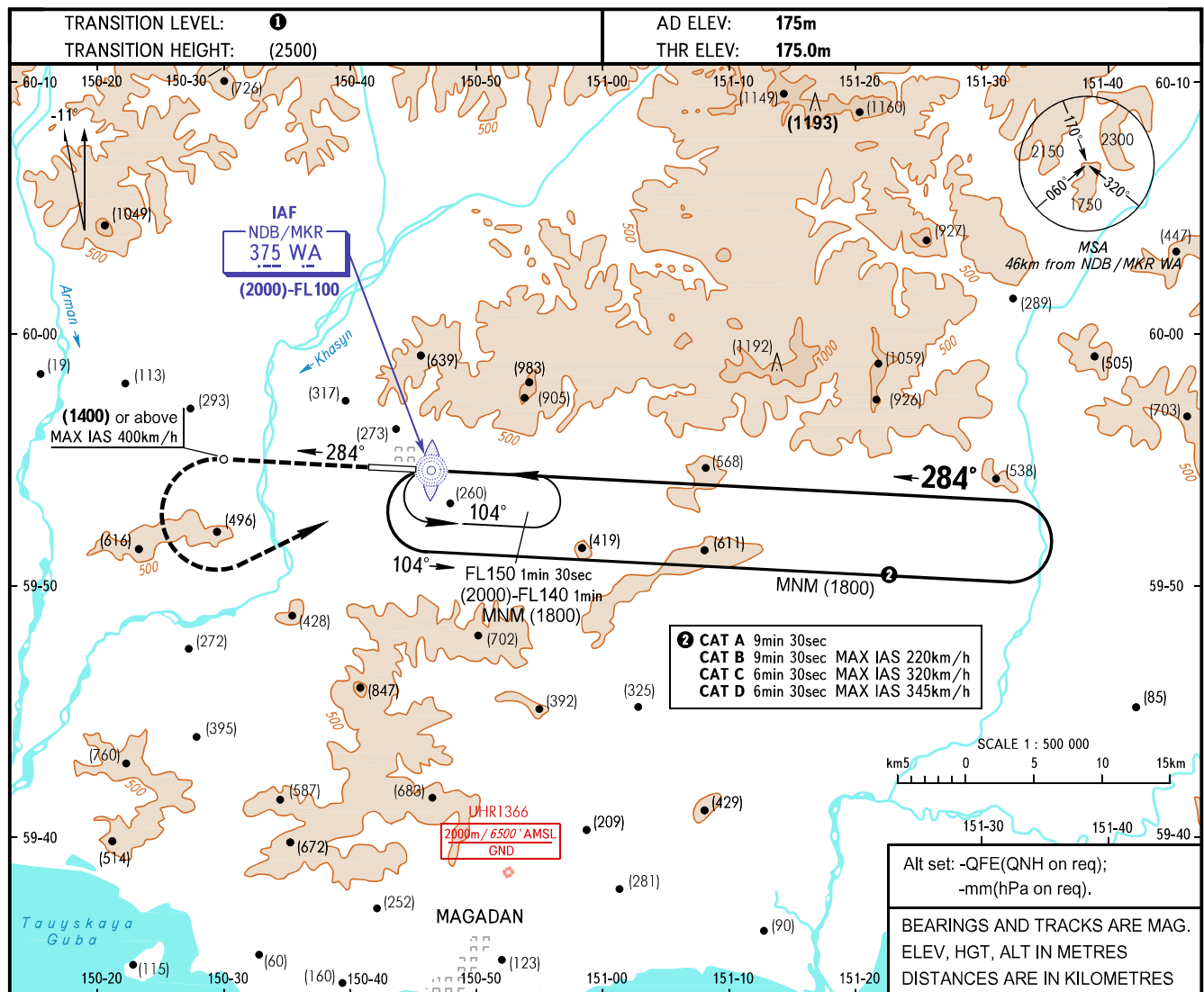


INSTRUMENT  
APPROACH  
CHART - ICAO

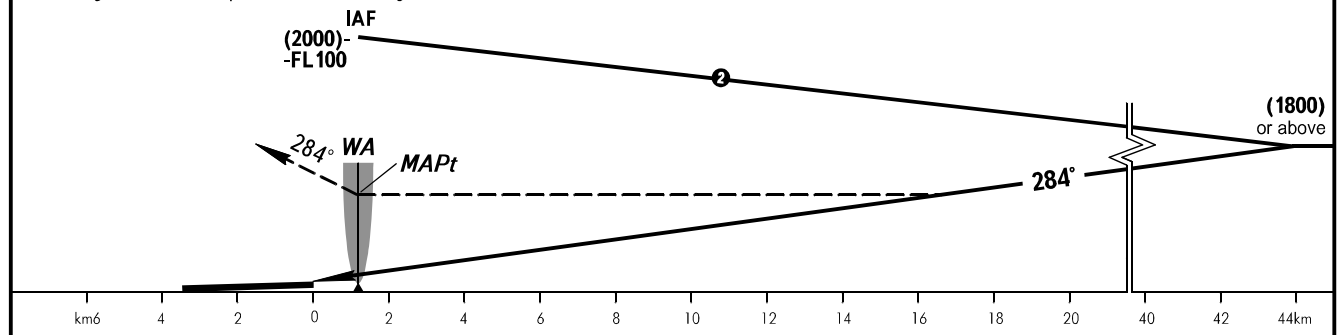
APPROACH **119.300**  
TOWER **120.800**

MAGADAN, RUSSIA  
SOKOL  
NDB Y RWY 28



**MISSED APPROACH**

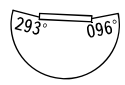
Climb straight ahead to (1400) or above, turn LEFT to NDB/MKR WA climbing to (1800) or above, then according to the chart or proceed to the holding area.



OCA(H)	A	B	C	D
Straight-in Approach	1150(975)	1325(1150)	1150(975)	1395(1220)
Circling	1150(975)	1325(1150)	1150(975)	1395(1220)

① TRANSITION LEVEL:  
- FL100 when QFE is 744mm mercury column or above;  
- FL110 when QFE is 717mm mercury column or above, but less than 744mm mercury column;  
- FL120 when QFE is less than 717mm mercury column.

**WARNING:**  
1. Turn before MAPt is PROHIBITED.  
2. MAPt at NDB/MKR WA. Timing not authorized for defining MAPt.



Visual manoeuvring to the North of AD is PROHIBITED.

CHANGE: New chart