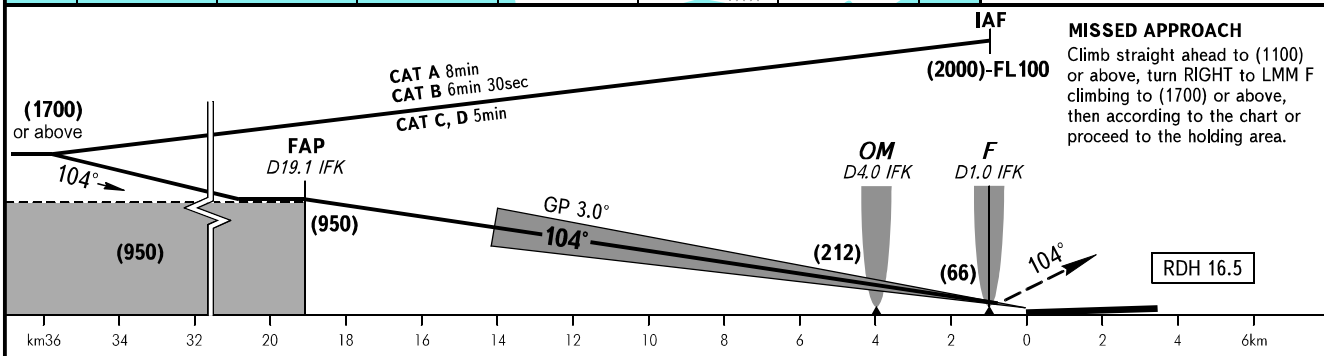
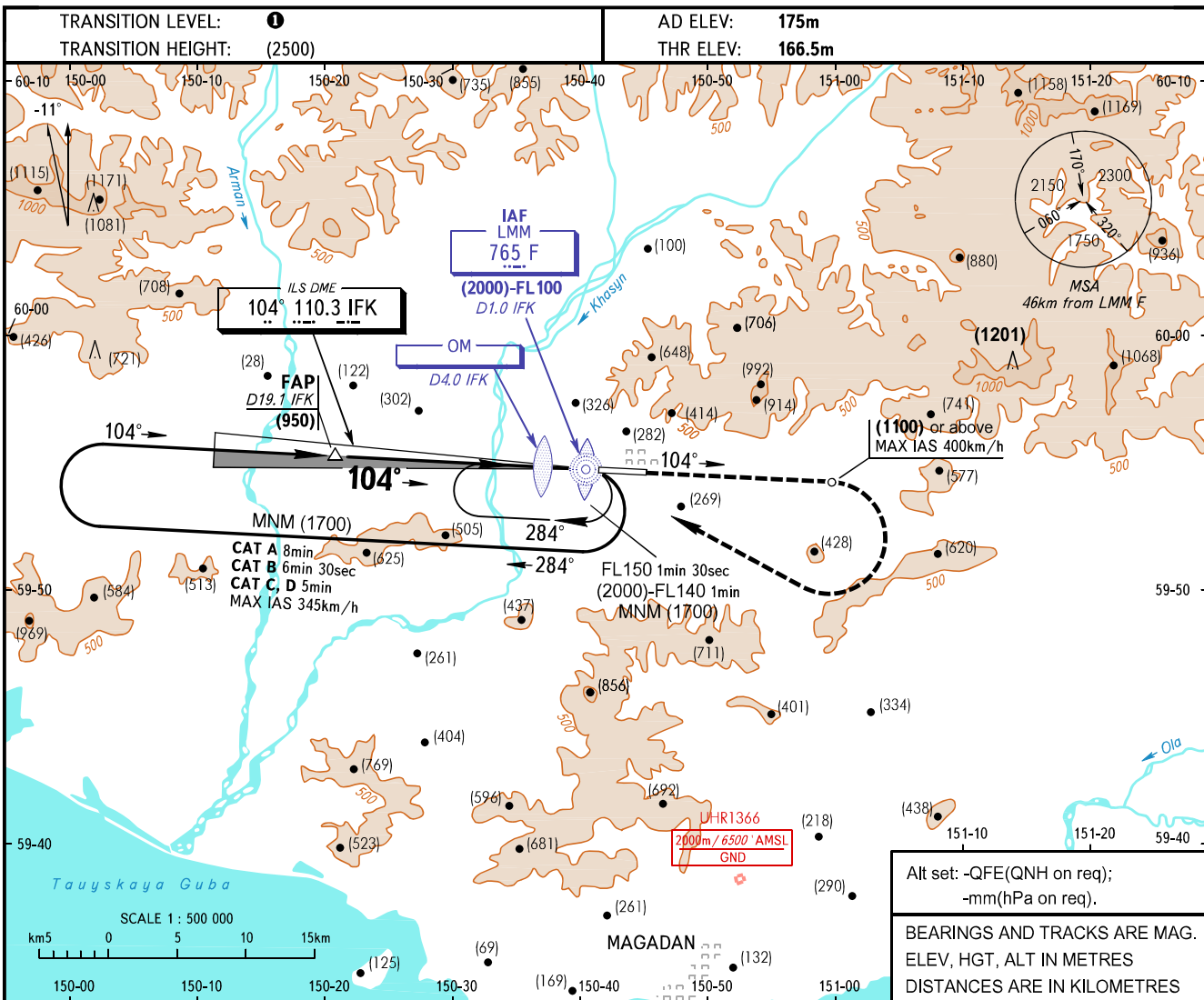


**INSTRUMENT
APPROACH
CHART - ICAO**

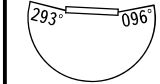
APPROACH **119.300**
TOWER **120.800**

MAGADAN, RUSSIA
SOKOL
ILS X CAT I RWY 10



OCA(H)		A	B	C	D	
Straight-in Approach	MNM climb gradient for missed APCH	4.0%	213(47)	216(50)	219(53)	223(56)
		2.5%	421(255)	425(258)	427(261)	430(264)
Circling			630(455)	840(665)	1045(870)	1325(1150)

- 1** TRANSITION LEVEL:
 - FL100 when QFE is 744mm mercury column or above;
 - FL110 when QFE is 717mm mercury column or above, but less than 744mm mercury column;
 - FL120 when QFE is less than 717mm mercury column.
- WARNING:**
 1. Climb gradient for missed approach procedure is 4.0% up to (1100).
 2. Turbulence occurs at height of (1100) during missed approach procedure due to terrain relief.
 3. DME IFK zero ranged to RWY 10 THR.



GROUND SPEED	km/h	150	180	210	240	270	300	330	360	390
RATE OF DESCENT	m/s	2.2	2.6	3.1	3.5	3.9	4.4	4.8	5.2	5.7

CHANGE: New chart