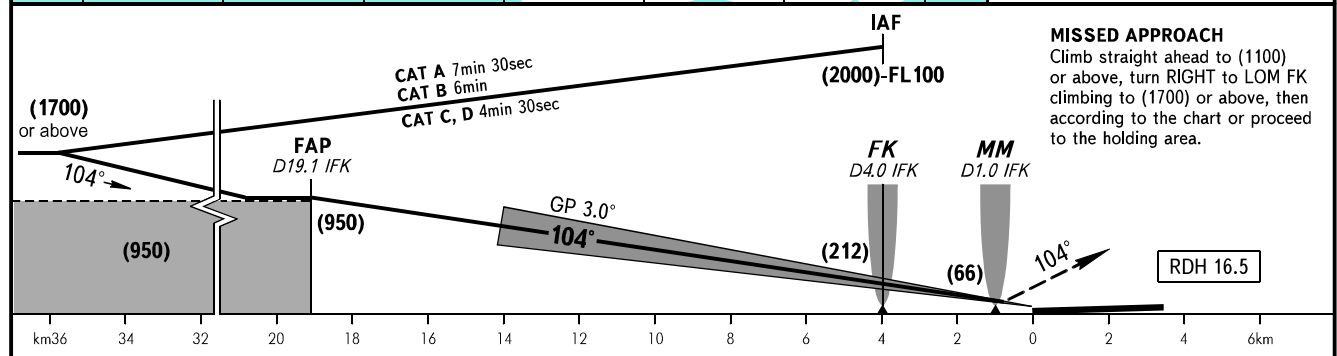
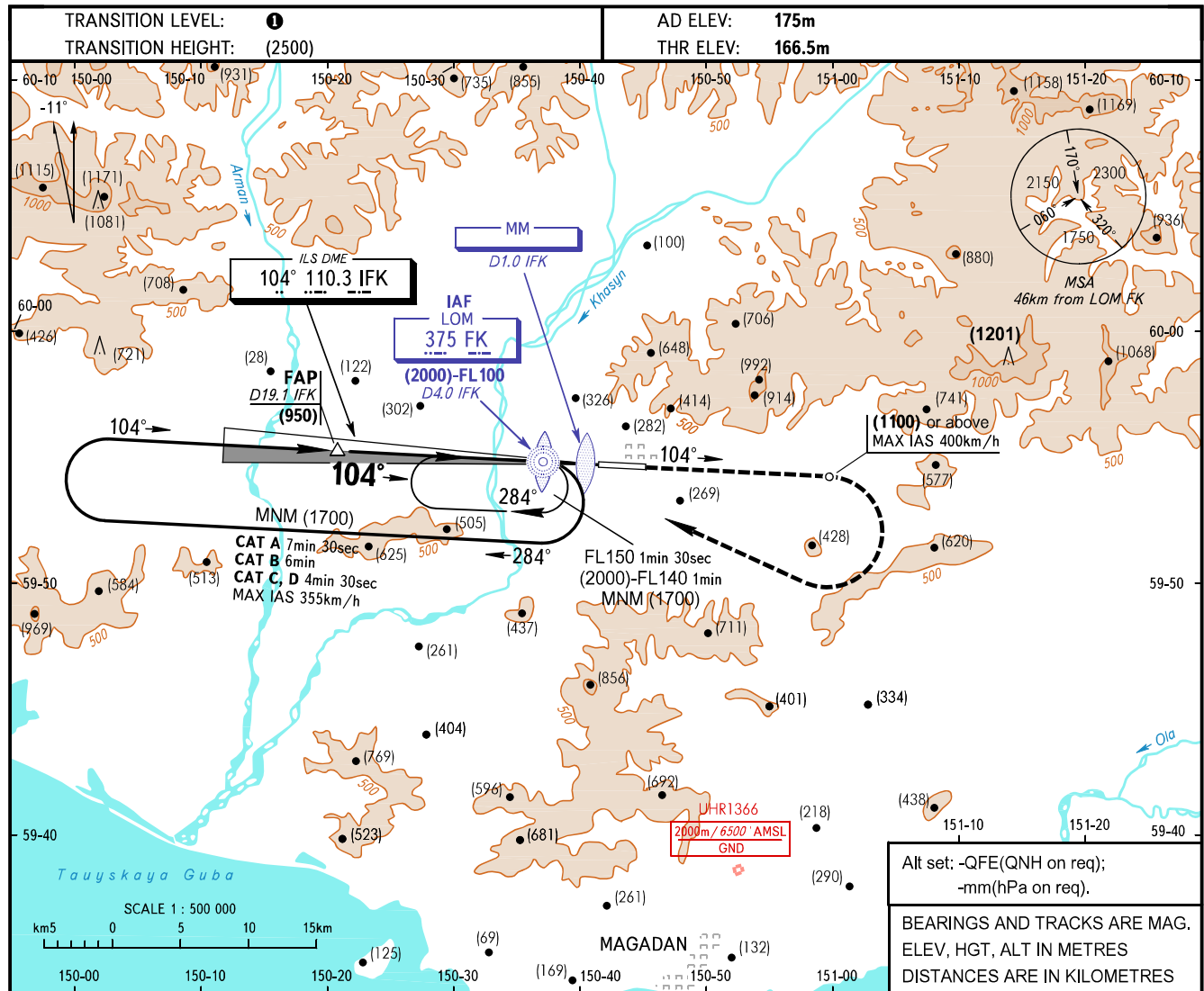


**INSTRUMENT  
APPROACH  
CHART - ICAO**

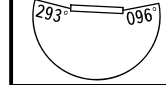
**MAGADAN, RUSSIA  
SOKOL  
ILS Y CAT I RWY 10**

APPROACH	<b>119.300</b>
TOWER	<b>120.800</b>



OCA(H)		A	B	C	D	
Straight-in Approach	MNM climb gradient for missed APCH	<b>4.0%</b>	213(47)	216(50)	219(53)	223(56)
		<b>2.5%</b>	421(255)	425(258)	427(261)	430(264)
Circling			630(455)	840(665)	1045(870)	1325(1150)

- 1** TRANSITION LEVEL:  
 - FL100 when QFE is 744mm mercury column or above;  
 - FL110 when QFE is 717mm mercury column or above, but less than 744mm mercury column;  
 - FL120 when QFE is less than 717mm mercury column.
- WARNING:**
1. Climb gradient for missed approach procedure is 4.0% up to (1100).
  2. Turbulence occurs at height of (1100) during missed approach procedure due to terrain relief.
  3. DME IFK zero according to RWY 10 THR.



Visual manoeuvring to the North of AD is PROHIBITED.

GROUND SPEED	km/h	150	180	210	240	270	300	330	360	390
RATE OF DESCENT	m/s	2.2	2.6	3.1	3.5	3.9	4.4	4.8	5.2	5.7