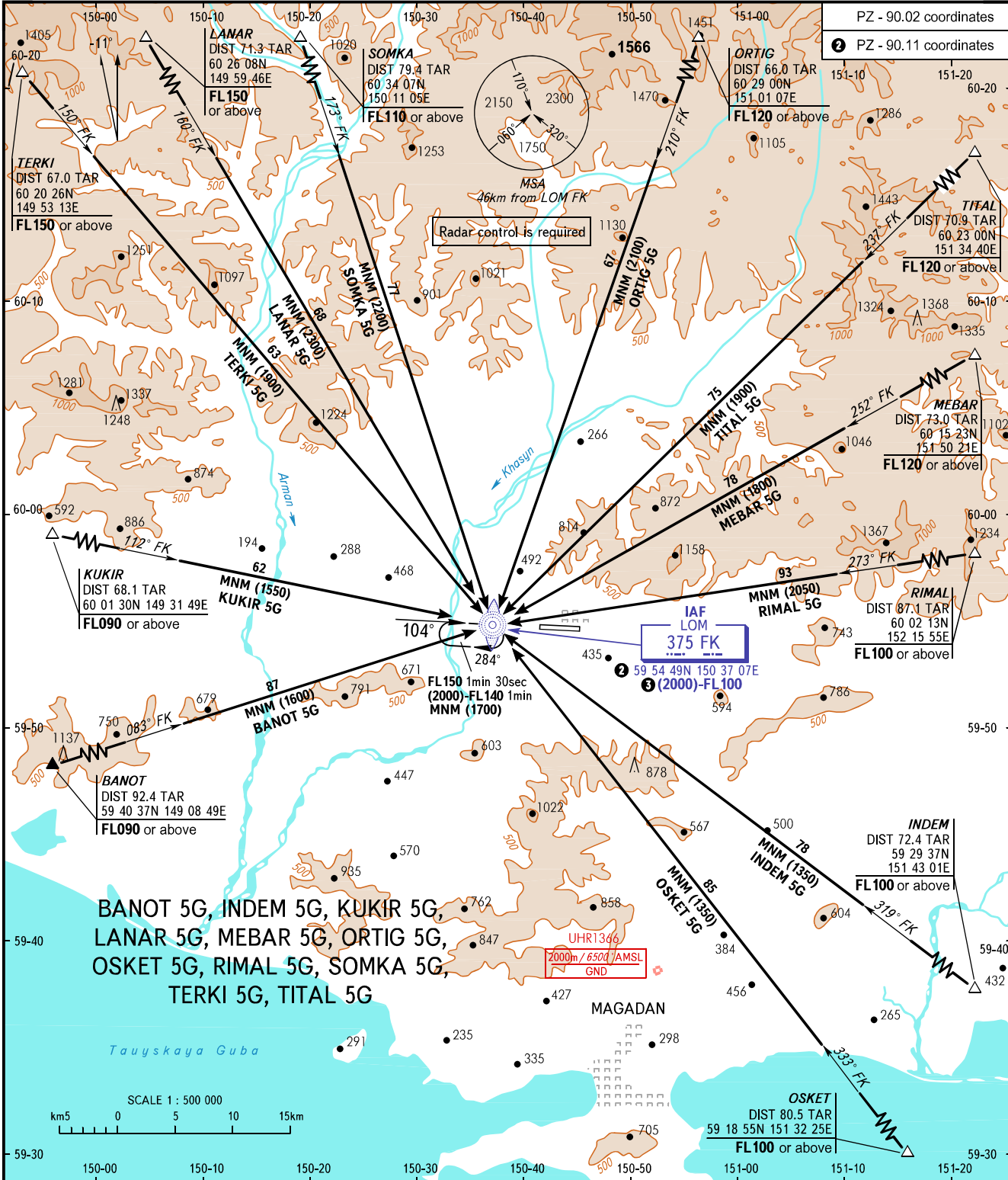


STANDARD ARRIVAL CHART
INSTRUMENT (STAR) - ICAO

MAGADAN, RUSSIA
SOKOL
RWY 10

TRANSITION
LEVEL: ①



BANOT 5G, INDEM 5G, KUKIR 5G,
LANAR 5G, MEBAR 5G, ORTIG 5G,
OSKET 5G, RIMAL 5G, SOMKA 5G,
TERKI 5G, TITAL 5G

APPROACH TOWER 119.300
TOWER 120.800

- ① TRANSITION LEVEL:
- FL100 when QFE is 744mm mercury column or above;
 - FL110 when QFE is 717mm mercury column or above, but less than 744mm mercury column;
 - FL120 when QFE is less than 717mm mercury column.
- ② WARNING

- Minimum heights at IAF LOM FK are:
- (2300) for LANAR 5G;
 - (2100) for ORTIG 5G;
 - (2050) for RIMAL 5G;
 - (2200) for SOMKA 5G.

BEARINGS AND TRACKS ARE MAGNETIC
ALTITUDES, HEIGHTS AND ELEVATIONS IN METRES
DISTANCES IN KILOMETRES

Alt set: -QFE(QNH on req);
-mm(hPa on req).

CHANGE: New chart