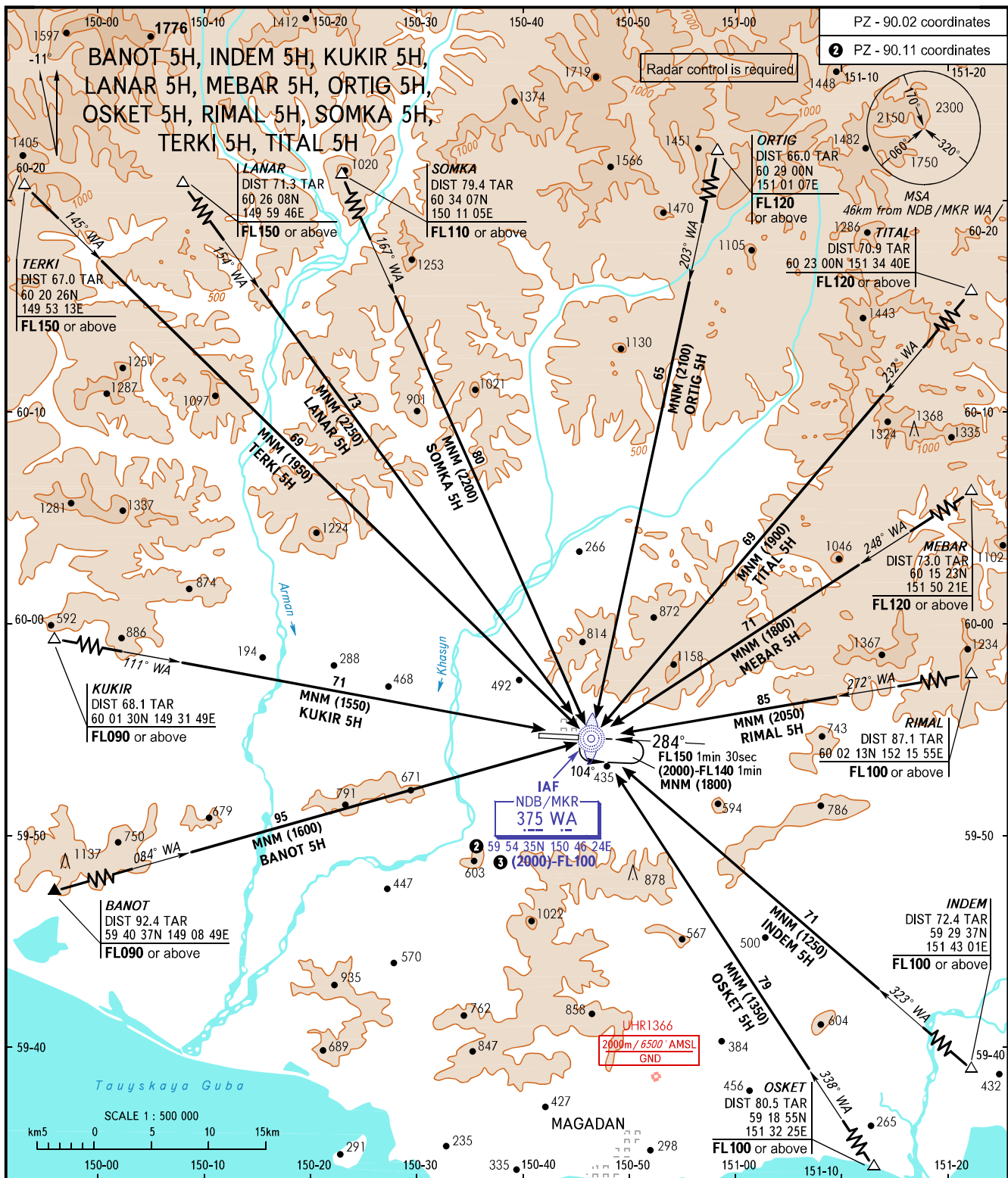


STANDARD ARRIVAL CHART
INSTRUMENT (STAR) - ICAO

MAGADAN, RUSSIA

SOKOL
RWY 28

TRANSITION
LEVEL: ①



APPROACH TOWER	119.300 120.800	<p>① TRANSITION LEVEL:</p> <ul style="list-style-type: none"> - FL100 when QFE is 744mm mercury column or above; - FL110 when QFE is 717mm mercury column or above, but less than 744mm mercury column; - FL120 when QFE is less than 717mm mercury column. <p>③ WARNING</p> <p>Minimum heights at IAF NDB/MKR WA are:</p> <ul style="list-style-type: none"> - (2250) for LANAR 5H; - (2100) for ORTIG 5H; - (2050) for RIMAL 5H; - (2200) for SOMKA 5H.
BEARINGS AND TRACKS ARE MAGNETIC ALTITUDES, HEIGHTS AND ELEVATIONS IN METRES DISTANCES IN KILOMETRES		
Air alt set: -QFE(QNH on req); -mm(hPa on req).		