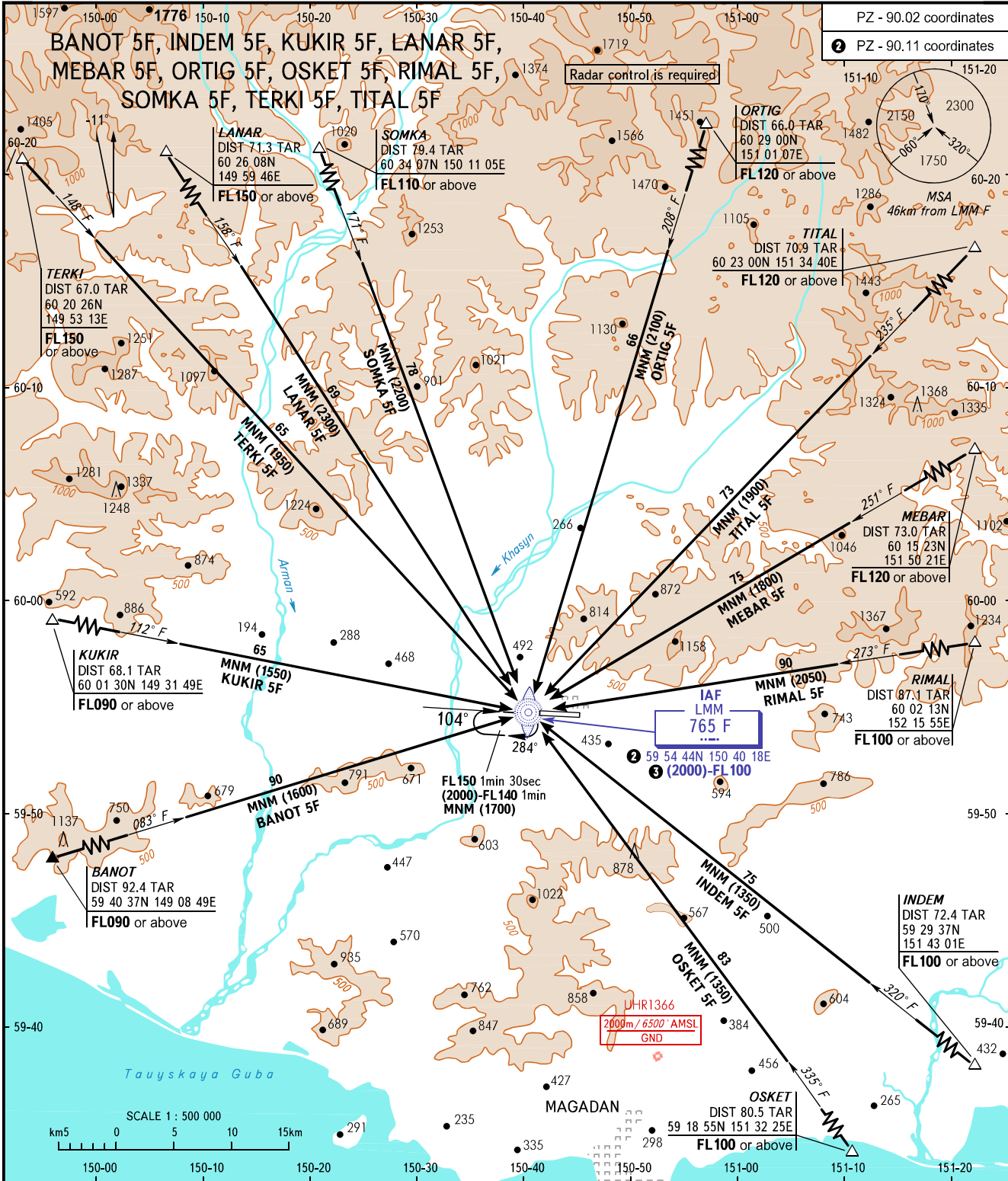


STANDARD ARRIVAL CHART  
INSTRUMENT (STAR) - ICAO

MAGADAN, RUSSIA  
SOKOL  
RWY 10

TRANSITION  
LEVEL: **1**



CHANGE: New chart

APPROACH TOWER  
119.300  
120.800

- 1** TRANSITION LEVEL:  
- FL100 when QFE is 744mm mercury column or above;  
- FL110 when QFE is 717mm mercury column or above, but less than 744mm mercury column;  
- FL120 when QFE is less than 717mm mercury column.
- 2** WARNING  
Minimum heights at IAF LMM F are:  
- (2300) for LANAR 5F;  
- (2100) for ORTIG 5F;  
- (2050) for RIMAL 5F;  
- (2200) for SOMKA 5F.

BEARINGS AND TRACKS ARE MAGNETIC  
ALTITUDES, HEIGHTS AND ELEVATIONS IN METRES  
DISTANCES IN KILOMETRES

Alt set: -QFE(QNH on req);  
-mm(hPa on req).