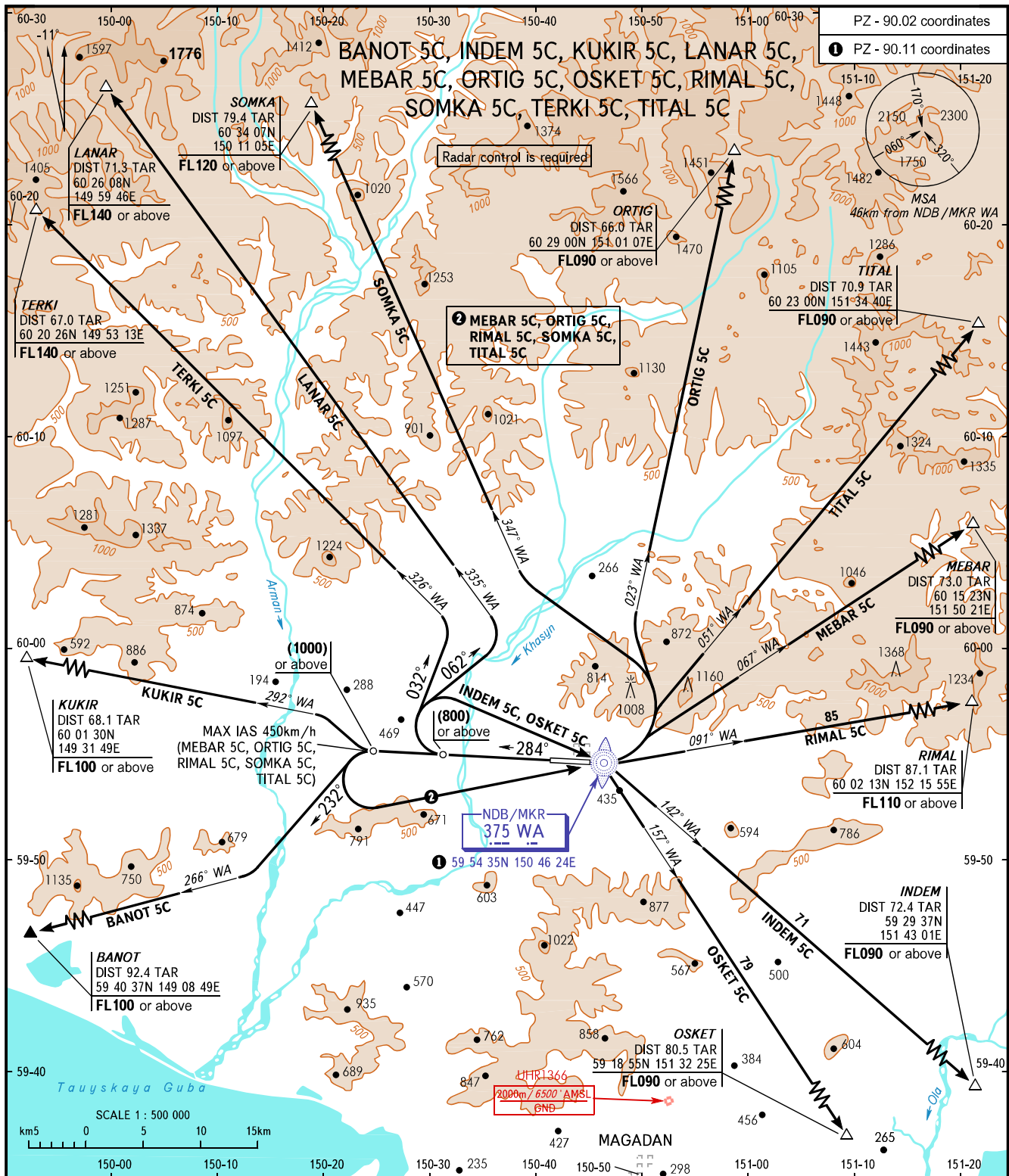


STANDARD DEPARTURE CHART
INSTRUMENT (SID) - ICAO

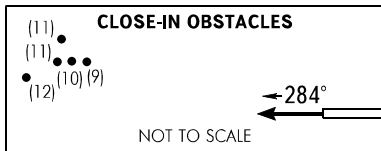
TRANSITION
HEIGHT : (2500)

MAGADAN, RUSSIA
SOKOL
RWY 28



TOWER
APPROACH 120.800
119.300

WARNING
There are close-in obstacles.



BEARINGS AND TRACKS ARE MAGNETIC
ALTITUDES, HEIGHTS AND ELEVATIONS IN METRES
DISTANCES IN KILOMETRES

Alt set: -QFE(QNH on req);
-mm(hPa on req).

Minimum climb gradients:
 - **BANOT 5C** 4.0% up to (1100) due to OBST, then 4.3% up to (2000) due to airspace structure;
 - **KUKIR 5C** 4.0% up to (1000) due to OBST, then 4.4% up to FL100 due to airspace structure;
 - **LANAR 5C** 5.6% up to (1450) due to OBST, then 4.2% up to FL140 due to airspace structure;
 - **MEBAR 5C, ORTIG 5C, RIMAL 5C, SOMKA 5C, TITAL 5C** 5.3% up to (1350) due to OBST;
 - **INDEM 5C, OSKET 5C** 5.6% up to (1450) due to OBST;
 - **TERKI 5C** 5.6% up to (1450) due to OBST, then 5.0% up to FL140 due to airspace structure.