

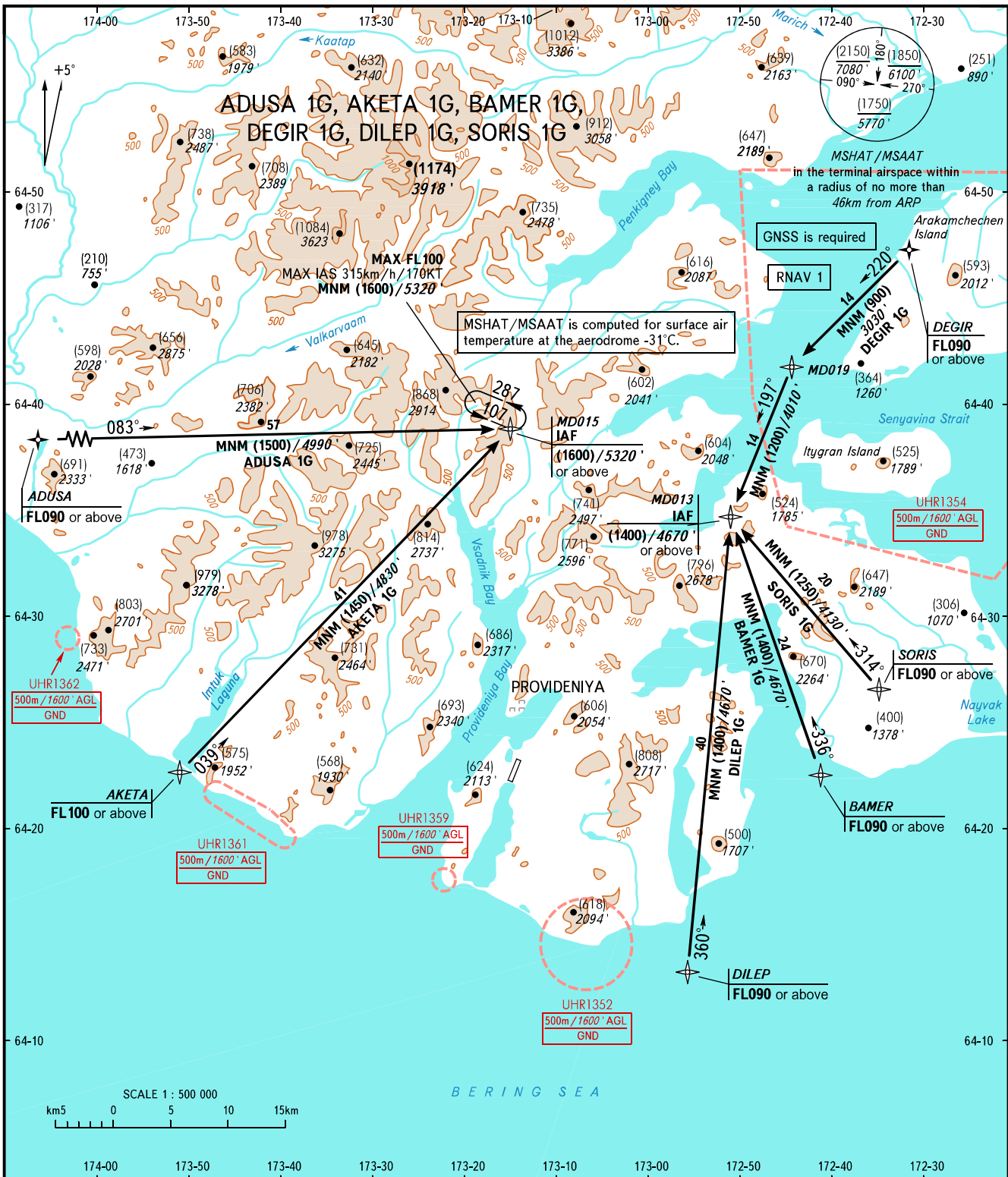
STANDARD ARRIVAL CHART
INSTRUMENT (STAR) - ICAO

TRANSITION
LEVEL: **1**

PROVIDENIYA BAY, RUSSIA

PROVIDENIYA

RNAV RWY 20



PROVIDENIYA TOWER **119.300**

1 TRANSITION LEVEL:

- FL090 when QFE is 760mm mercury column (1013 hPa) or above;
- FL100 when QFE is 733mm mercury column (977 hPa) or above, but less than 760mm mercury column (1013 hPa);
- FL110 when QFE is less than 733mm mercury column (977 hPa).

BEARINGS AND TRACKS ARE MAGNETIC
 HEIGHTS IN METRES
 ALTITUDES IN FEET
 ELEVATIONS IN METRES AND FEET
 DISTANCES IN KILOMETRES

Alt set: -QFE(QNH on req);
 -mm(hPa on req).