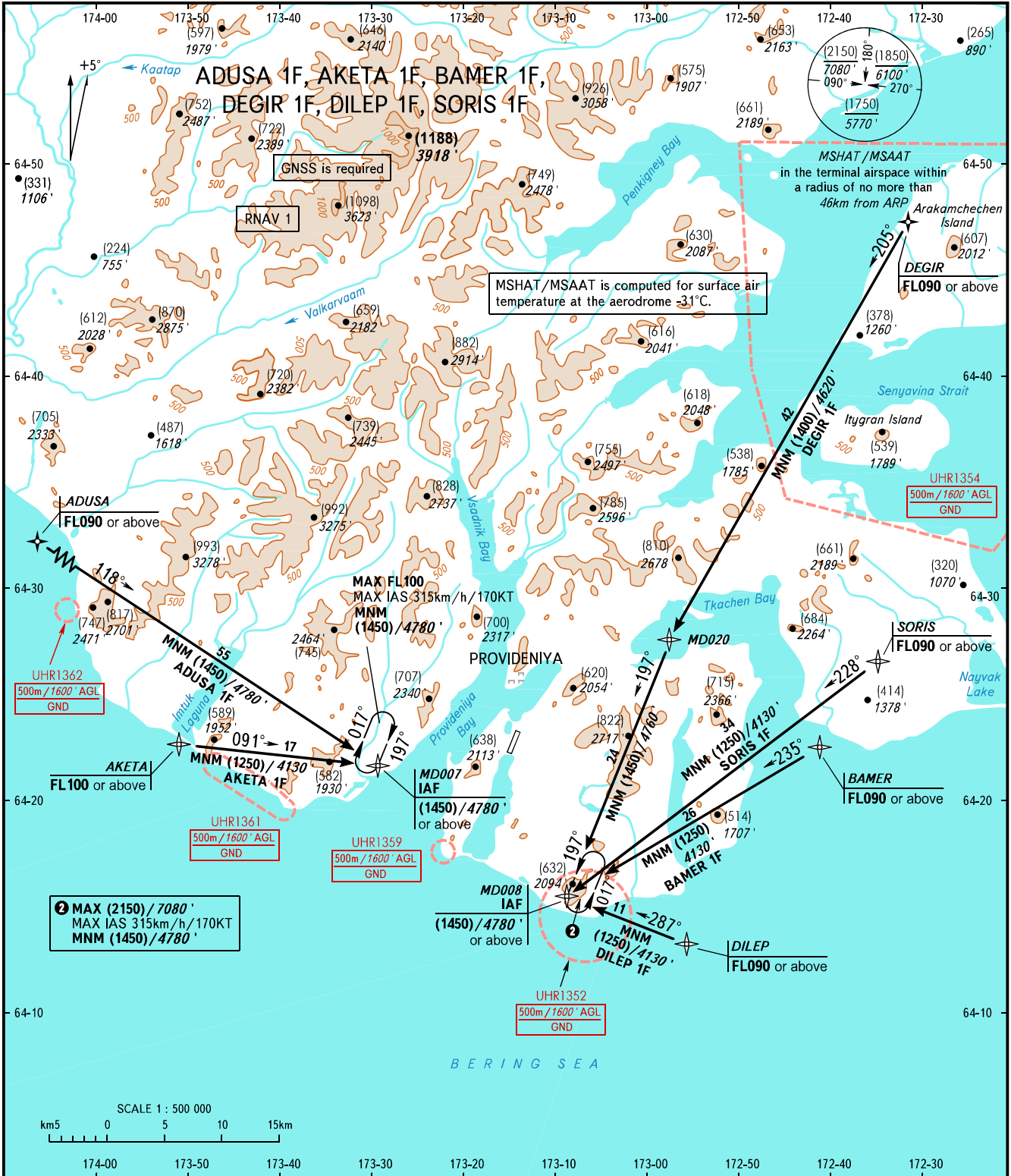


STANDARD ARRIVAL CHART
INSTRUMENT (STAR) - ICAO

TRANSITION
LEVEL: **1**

PROVIDENIYA BAY, RUSSIA
PROVIDENIYA
RNAV RWY 02



PROVIDENIYA TOWER **119.300**

- 1** TRANSITION LEVEL:
- FL090 when QFE is 760mm mercury column (1013 hPa) or above;
 - FL100 when QFE is 733mm mercury column (977 hPa) or above, but less than 760mm mercury column (1013 hPa);
 - FL110 when QFE is less than 733mm mercury column (977 hPa).

BEARINGS AND TRACKS ARE MAGNETIC
HEIGHTS IN METRES
ALTITUDES IN FEET
ELEVATIONS IN METRES AND FEET
DISTANCES IN KILOMETRES

Alt set: -QFE(QNH on req);
-mm(hPa on req).

CHANGE: New chart