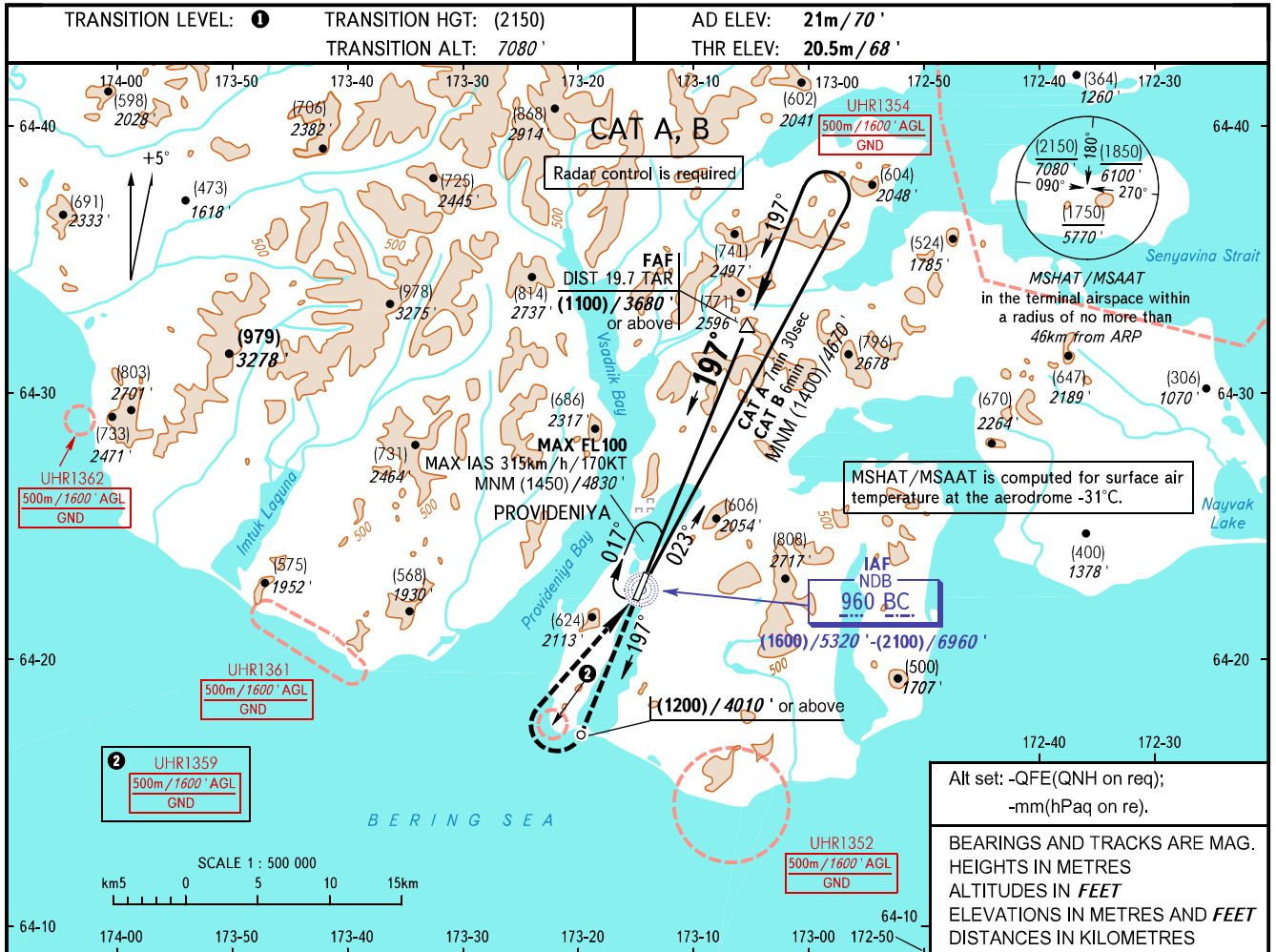


**INSTRUMENT
APPROACH
CHART - ICAO**

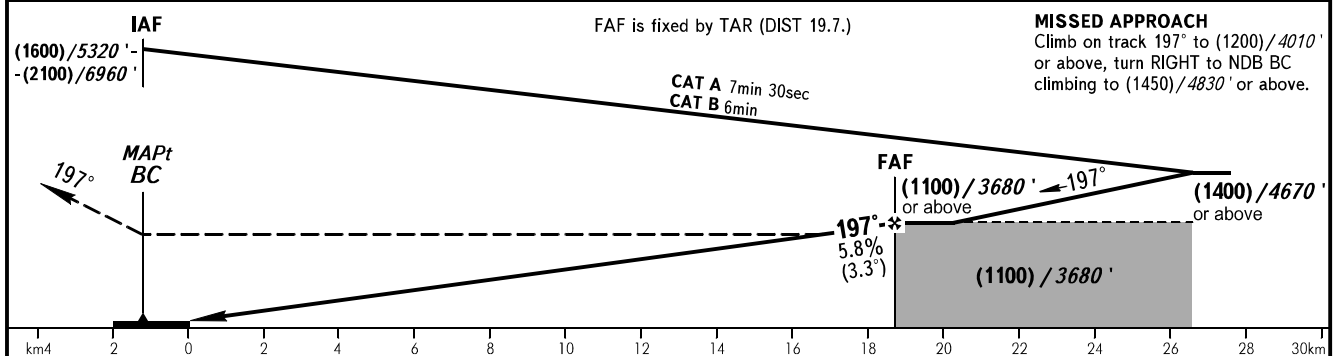
PROVIDENIYA TOWER 119.300

**PROVIDENIYA BAY, RUSSIA
PROVIDENIYA
NDB B RWY 20**



Alt set: -QFE(QNH on req);
-mm(hPaq on re).

BEARINGS AND TRACKS ARE MAG.
HEIGHTS IN METRES
ALTITUDES IN FEET
ELEVATIONS IN METRES AND FEET
DISTANCES IN KILOMETRES



| OCA(H) | A | B | C | D | | | | | |
|----------------------|--------------------|--------------------|-----|-----|-----|--|--|--|--|
| Straight-in Approach | | | | | | | | | |
| | | | | | | | | | |
| Circling | 960/(940) 3150' | 960/(940) 3150' | | | | | | | |
| GROUND SPEED | km/h | 150 | 180 | 210 | 240 | | | | |
| | kt | 81 | 97 | 113 | 130 | | | | |
| RATE OF DESCENT | m/s | 2.4 | 2.9 | 3.4 | 3.9 | | | | |
| | ft/min | 476 | 571 | 666 | 761 | | | | |

1 TRANSITION LEVEL:
- FL090 when QFE is 760mm mercury column (1013 hPa) or above;
- FL100 when QFE is 733mm mercury column (977 hPa) or above, but less than 760mm mercury column (1013 hPa);
- FL110 when QFE is less than 733mm mercury column (977 hPa).

WARNING:
1. Turn before passing MAPt is PROHIBITED.
2. MAPt at NDB BC. Timing not authorized for defining MAPt.
3. Increased turbulence with down-draughts can be expected on final.