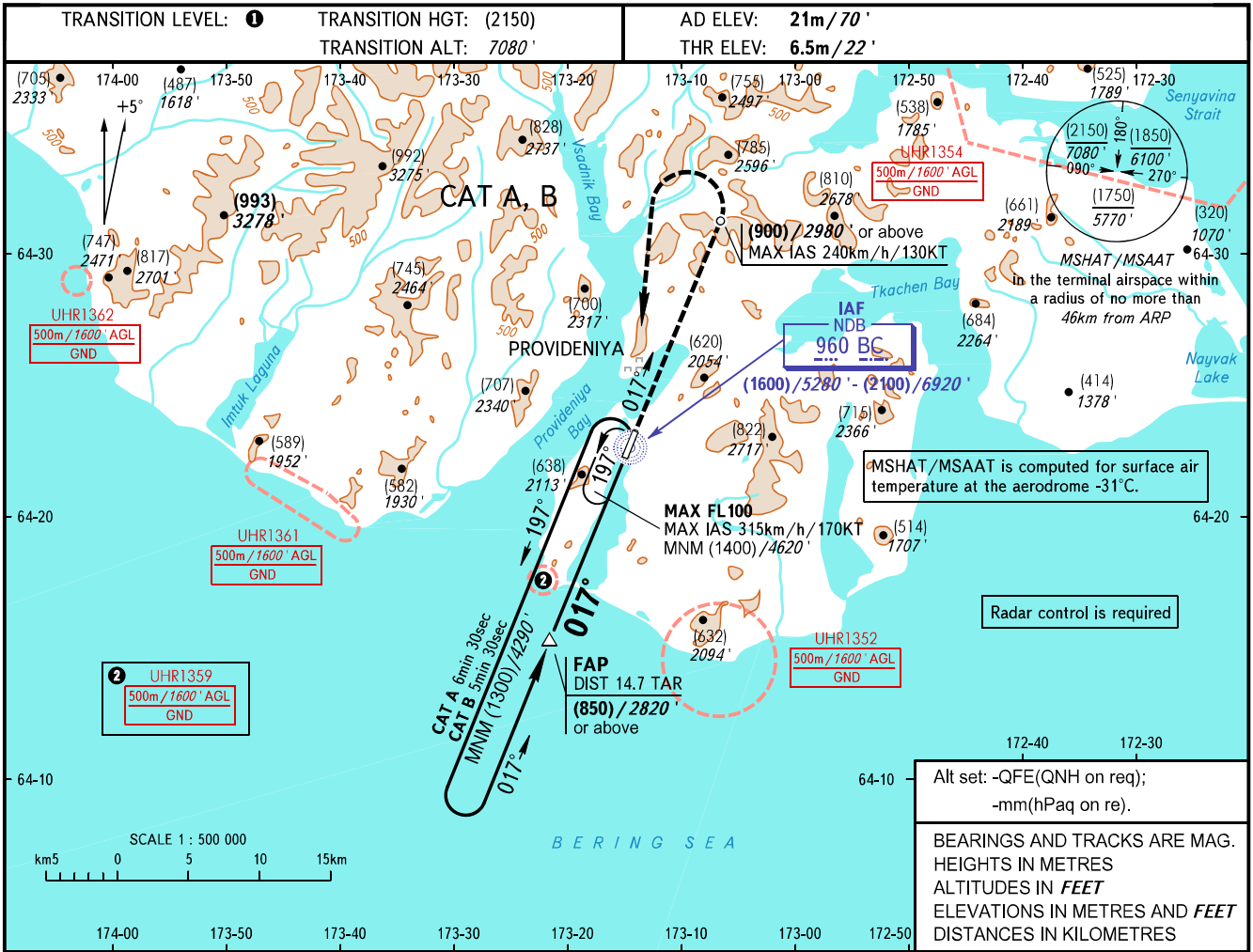


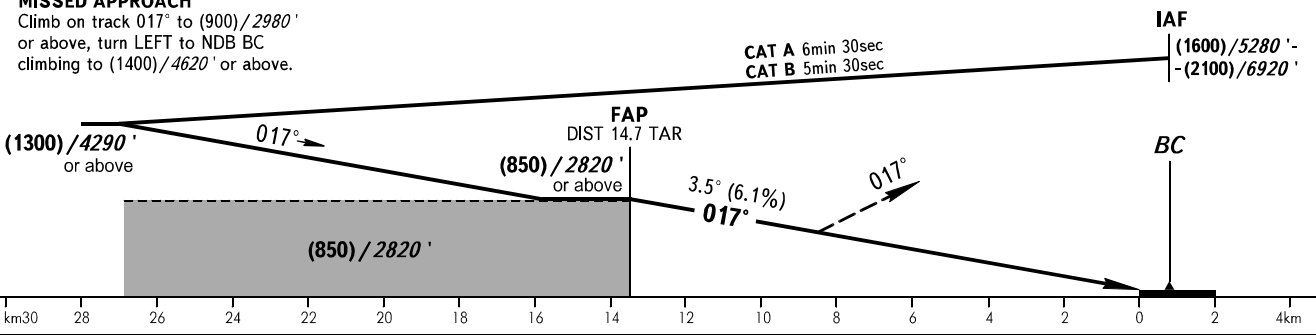
**INSTRUMENT
APPROACH
CHART - ICAO**

PROVIDENIYA TOWER 119.300

**PROVIDENIYA BAY, RUSSIA
PROVIDENIYA
PAR RWY 02**



MISSED APPROACH
Climb on track 017° to (900)/2980' or above, turn LEFT to NDB BC climbing to (1400)/4620' or above.



OCA(H)	MNM climb gradient	A	B	C	D
Straight-in Approach	2.5%	546/(539) 1792'	546/(539) 1792'		
	3.0%	520/(513) 1707'	520/(513) 1707'		
	4.0%	500/(493) 1641'	500/(493) 1641'		
Circling		835/(815) 2740'	835/(815) 2740'		
GROUND SPEED	km/h	150	180	210	240
	kt	81	97	113	130
RATE OF DESCENT	m/s	2.5	3.1	3.6	4.1
	ft/min	500	600	700	801

1 TRANSITION LEVEL:
- FL090 when QFE is 760mm mercury column (1013 hPa) or above;
- FL100 when QFE is 733mm mercury column (977 hPa) or above, but less than 760mm mercury column (1013 hPa);
- FL110 when QFE is less than 733mm mercury column (977 hPa).

WARNING:
1. Turn before NDB BC is PROHIBITED.
2. Increased turbulence with down-draughts can be expected on final.

Alt set: -QFE(QNH on req);
-mm(hPaq on re).
BEARINGS AND TRACKS ARE MAG.
HEIGHTS IN METRES
ALTITUDES IN FEET
ELEVATIONS IN METRES AND FEET
DISTANCES IN KILOMETRES

CHANGE: New chart