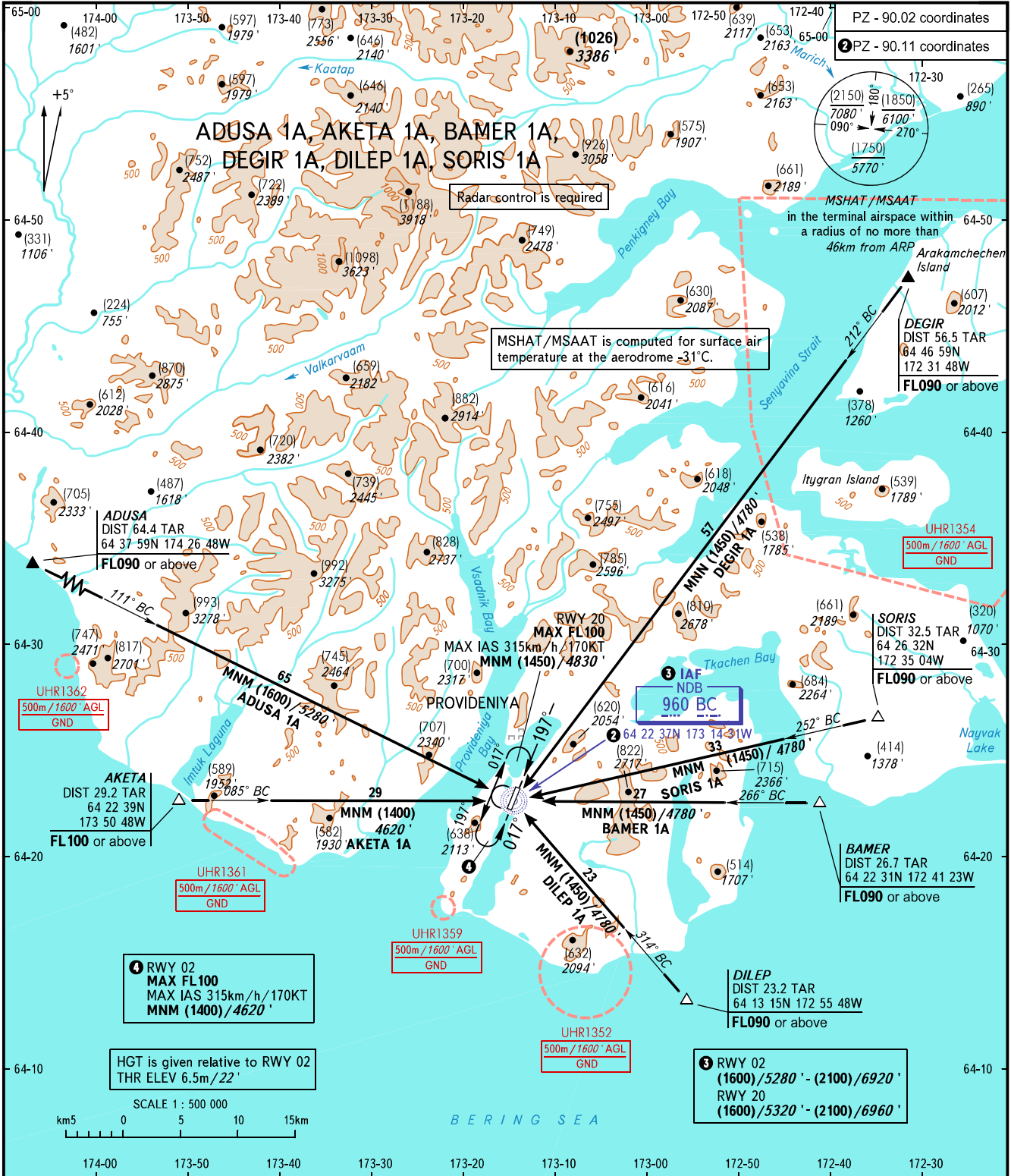


STANDARD ARRIVAL CHART
INSTRUMENT (STAR) - ICAO

PROVIDENIYA BAY, RUSSIA
PROVIDENIYA
RWY 02/20

TRANSITION
LEVEL: **1**



PZ - 90.02 coordinates
PZ - 90.11 coordinates

Radar control is required

MSHAT/MSAAT is computed for surface air temperature at the aerodrome -31°C.

DEGIR
DIST 56.5 TAR
64 46 59N
172 31 48W
FL090 or above

UHR1354
500m/1600' AGL
GND

SORIS
DIST 32.5 TAR
64 26 32N
172 35 04W
FL090 or above

BAMER
DIST 26.7 TAR
64 22 31N 172 41 23W
FL090 or above

3 RWY 02
(1600)/5280' - (2100)/6920'
RWY 20
(1600)/5320' - (2100)/6960'

4 RWY 02
MAX FL100
MAX IAS 315km/h/170KT
MNM (1400)/4620'

HGT is given relative to RWY 02
THR ELEV 6.5m/22'

PROVIDENIYA TOWER 119.300

- 1 TRANSITION LEVEL:
- FL090 when QFE is 760mm mercury column (1013 hPa) or above;
 - FL100 when QFE is 733mm mercury column (977 hPa) or above, but less than 760mm mercury column (1013 hPa);
 - FL110 when QFE is less than 733mm mercury column (977 hPa).

BEARINGS AND TRACKS ARE MAGNETIC
HEIGHTS IN METRES
ALTITUDES IN FEET
ELEVATIONS IN METRES AND FEET
DISTANCES IN KILOMETRES

Alt set: -QFE(QNH on req);
-mm(hPa on req).

CHANGE: New chart