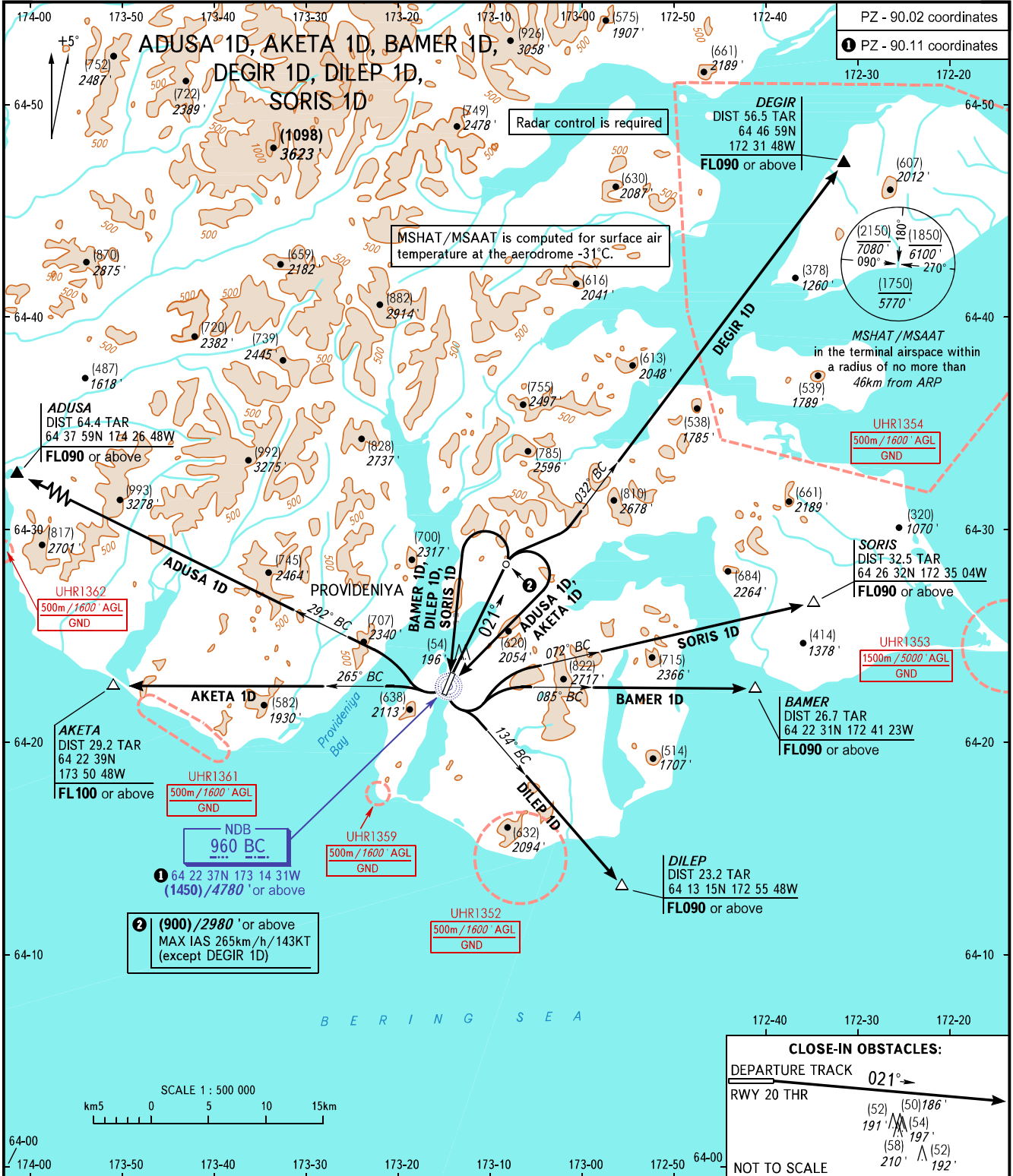


STANDARD DEPARTURE CHART
INSTRUMENT (SID) - ICAO

TRANSITION HGT: (2150)
TRANSITION ALT: 7080'

PROVIDENIYA BAY, RUSSIA
PROVIDENIYA
RWY 02



<p>PROVIDENIYA TOWER 119.300</p> <p>BEARINGS AND TRACKS ARE MAGNETIC HEIGHTS IN METRES ALTITUDES IN FEET ELEVATIONS IN METRES AND FEET DISTANCES IN KILOMETRES</p>	<p>WARNING Turn before passing DER is PROHIBITED.</p> <p>Alt set: -QFE(QNH on req); -mm (hPa on req).</p>	<p>MNM climb gradient:</p> <ul style="list-style-type: none"> - 9.7% up to (900)/2980' due to obstacles for ADUSA 1D; - 9.7% up to (900)/2980' due to obstacles, then 4.7% up to FL100 due to the airspace structure for AKETA 1D; - 9.7% up to (900)/2980' due to obstacles, then 4.1% up to FL090 due to the airspace structure for BAMER 1D; - 9.7% up to (900)/2980' due to obstacles, then 4.0% up to FL090 due to the airspace structure for DEGIR 1D; - 9.7% up to (900)/2980' due to obstacles, then 4.7% up to FL090 due to the airspace structure for DILEP 1D; - 9.7% up to (900)/2980' due to obstacles, then 3.8% up to FL090 due to the airspace structure for SORIS 1D.
--	--	--

CHANGE: New chart