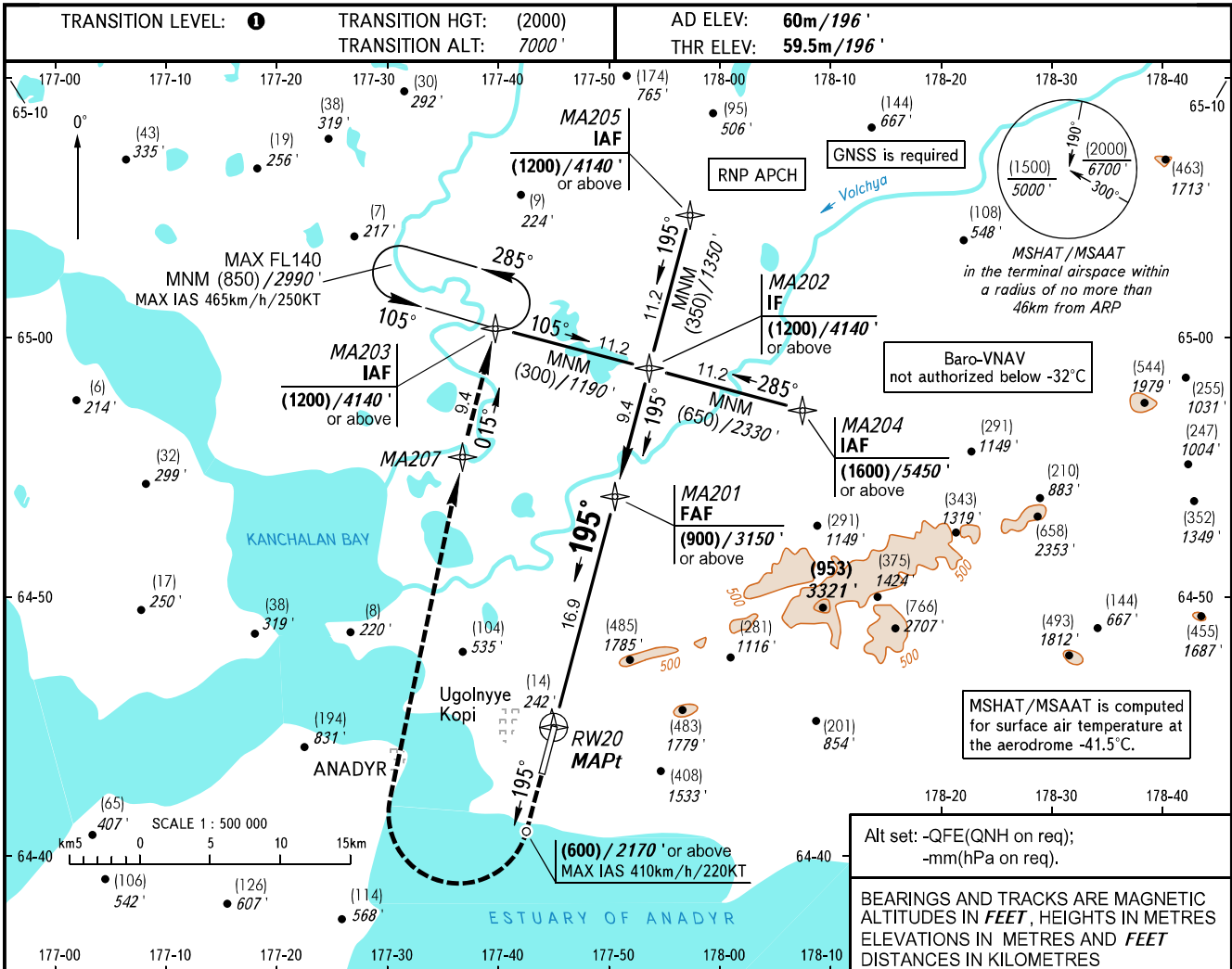


**INSTRUMENT  
APPROACH  
CHART - ICAO**

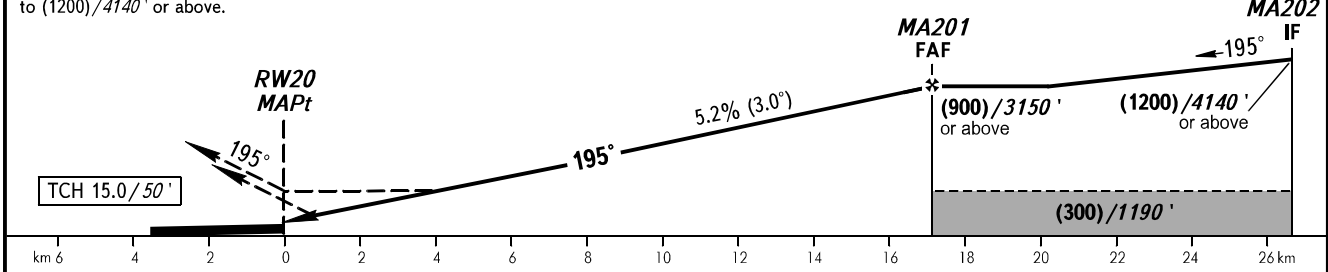
ANADYR APPROACH **120.500**  
ANADYR START **124.000**

**ANADYR, RUSSIA  
UGOLNY  
RNP RWY 20**



**MISSED APPROACH**  
Climb straight ahead to (600)/2170' or above, turn RIGHT to MA207, then to MA203 climbing to (1200)/4140' or above.

|                 |            |             |             |             |
|-----------------|------------|-------------|-------------|-------------|
| DIST to RW20    | 3.0        | 6.0         | 9.0         | 9.0         |
| HEIGHT/ALTITUDE | (172)/762' | (330)/1278' | (487)/1793' | (644)/2309' |



| OCA(H)               |           | A                 | B                 | C                  | D                  |
|----------------------|-----------|-------------------|-------------------|--------------------|--------------------|
| Straight-in Approach | LNAV      | 255 (195)<br>840' | 255 (195)<br>840' | 255 (195)<br>840'  | 255 (195)<br>840'  |
|                      | LNAV/VNAV | 115 (55)<br>380'  | 120 (60)<br>400'  | 120 (60)<br>400'   | 125 (65)<br>415'   |
|                      | Circling  | 255 (195)<br>840' | 270 (210)<br>890' | 355 (295)<br>1170' | 355 (295)<br>1170' |

**TRANSITION LEVEL:**  
- FL080 when QFE is 760mm mercury column (1013 hPa) or above;  
- FL090 when QFE is 733mm mercury column (977 hPa) or above, but less than 760mm mercury column (1013 hPa);  
- FL100 when QFE is less than 733mm mercury column (977 hPa).

**WARNING**  
Visual manoeuvring east of aerodrome is PROHIBITED.  
MAPt at RW20. Timing not authorized for defining MAPt.

|                 |        |     |     |     |     |     |     |     |      |
|-----------------|--------|-----|-----|-----|-----|-----|-----|-----|------|
| GROUND SPEED    | km/h   | 150 | 180 | 210 | 240 | 270 | 300 | 330 | 360  |
|                 | kt     | 81  | 97  | 113 | 130 | 146 | 162 | 178 | 195  |
| RATE OF DESCENT | m/s    | 2.2 | 2.6 | 3.0 | 3.5 | 3.9 | 4.3 | 4.8 | 5.2  |
|                 | ft/min | 427 | 512 | 597 | 682 | 768 | 853 | 938 | 1024 |