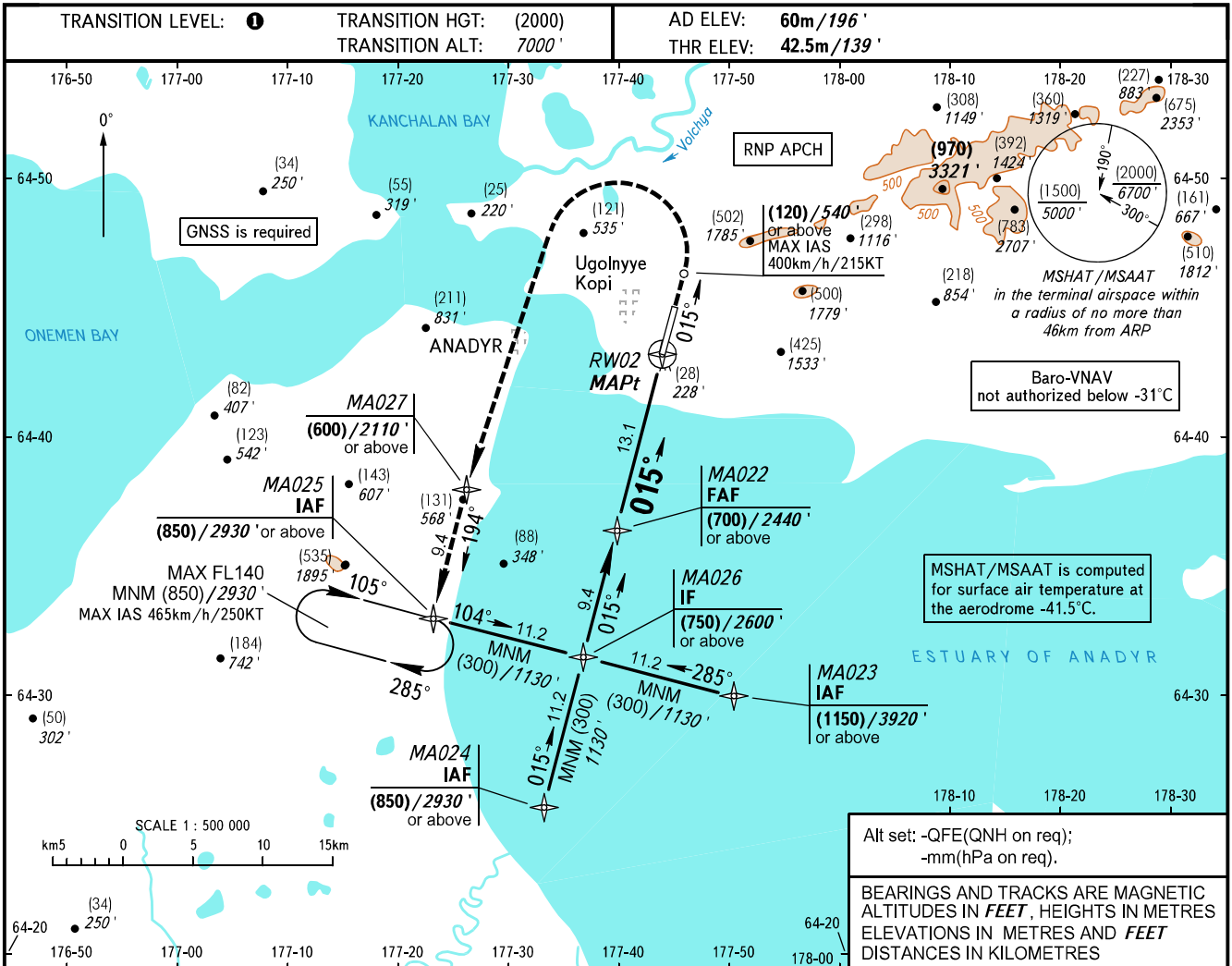


**INSTRUMENT
APPROACH
CHART - ICAO**

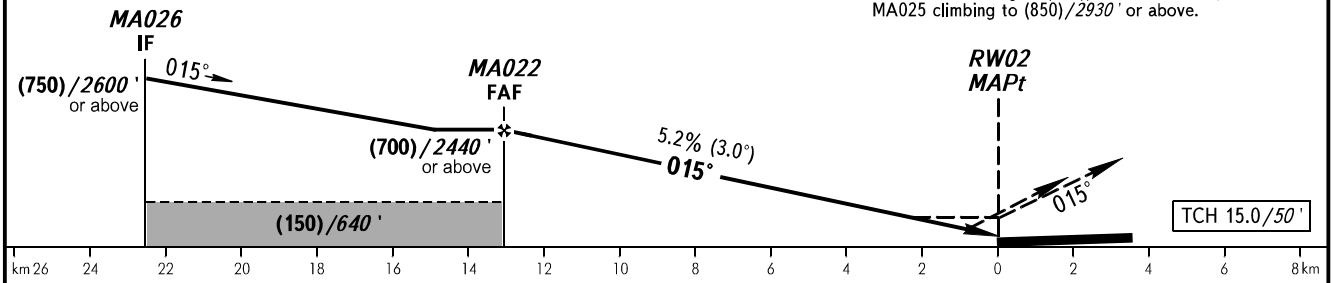
ANADYR APPROACH **120.500**
ANADYR START **124.000**

**ANADYR, RUSSIA
UGOLNY
RNP RWY 02**



DIST to RW02	9.0	6.0	3.0
HEIGHT/ALTITUDE	(487)/1738'	(330)/1222'	(173)/706'

MISSSED APPROACH
Climb straight ahead to (120) / 540' or above, turn LEFT to MA027 climbing to (600) / 2110' or above, then to MA025 climbing to (850) / 2930' or above.



OCA(H)		A	B	C	D
Straight-in	LNAV	145 (105) 480'	145 (105) 480'	145 (105) 480'	145 (105) 480'
	LNAV/VNAV	110 (70) 370'	115 (75) 380'	120 (80) 400'	130 (90) 430'
Approach	Circling	180 (120) 600'	270 (210) 890'	355 (295) 1170'	355 (295) 1170'

TRANSITION LEVEL:
- FL080 when QFE is 760mm mercury column (1013 hPa) or above;
- FL090 when QFE is 733mm mercury column (977 hPa) or above, but less than 760mm mercury column (1013 hPa);
- FL100 when QFE is less than 733mm mercury column (977 hPa).

WARNING
Visual manoeuvring east of aerodrome is PROHIBITED.
MAPt at RW02. Timing not authorized for defining MAPt.

GROUND SPEED	km/h	150	180	210	240	270	300	330	360
	kt	81	97	113	130	146	162	178	195
RATE OF DESCENT	m/s	2.2	2.6	3.0	3.5	3.9	4.3	4.8	5.2
	ft/min	427	512	597	682	768	853	938	1024