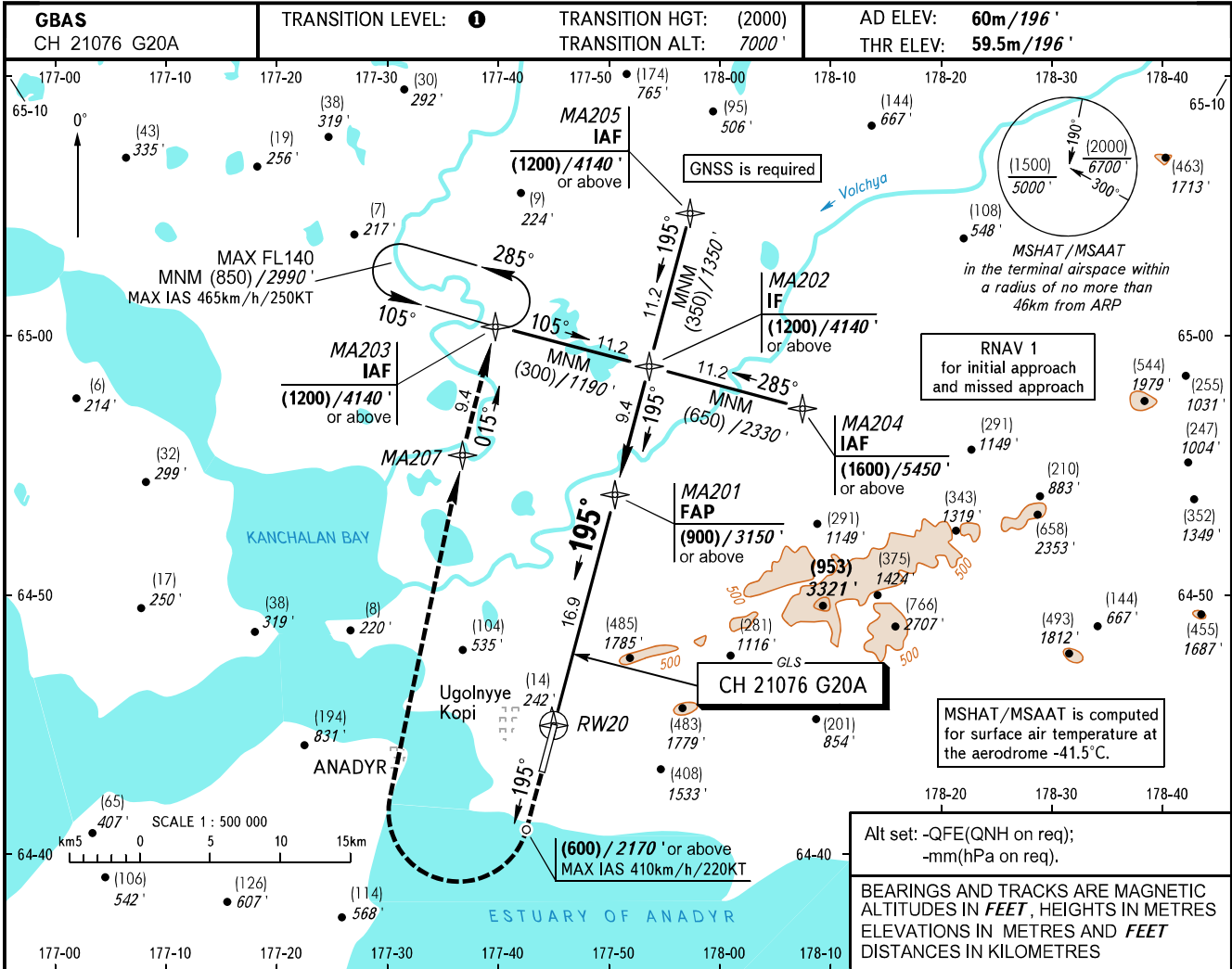


**INSTRUMENT  
APPROACH  
CHART - ICAO**

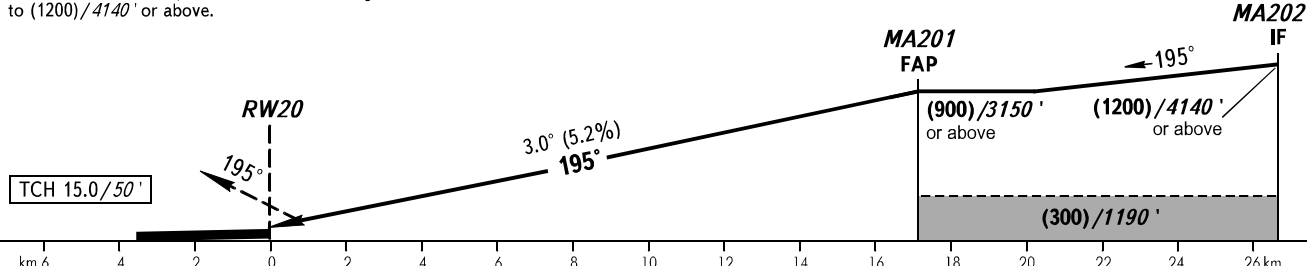
ANADYR APPROACH **120.500**  
ANADYR START **124.000**

**ANADYR, RUSSIA  
UGOLNY  
GLS RWY 20**



**MISSED APPROACH**  
Climb straight ahead to (600)/2170' or above, turn RIGHT to MA207, then to MA203 climbing to (1200)/4140' or above.

DIST to RW20	3.0	6.0	9.0	12.0
HEIGHT/ALTITUDE	(172)/762'	(330)/1278'	(487)/1793'	(644)/2309'



OCA(H)		A	B	C	D
Straight-in	CAT I	120 (60) 394'	120 (60) 394'	120 (60) 394'	123 (64) 404'
	Approach				
Circling		180 (120) 600'	270 (210) 890'	355 (295) 1170'	355 (295) 1170'

**TRANSITION LEVEL:**  
- FL080 when QFE is 760mm mercury column (1013 hPa) or above;  
- FL090 when QFE is 733mm mercury column (977 hPa) or above, but less than 760mm mercury column (1013 hPa);  
- FL100 when QFE is less than 733mm mercury column (977 hPa).

**WARNING**  
Visual manoeuvring east of aerodrome is PROHIBITED.

GROUND SPEED	km/h	150	180	210	240	270	300	330	360
	kt	81	97	113	130	146	162	178	195
RATE OF DESCENT	m/s	2.2	2.6	3.0	3.5	3.9	4.3	4.8	5.2
	ft/min	427	512	597	682	768	853	938	1024