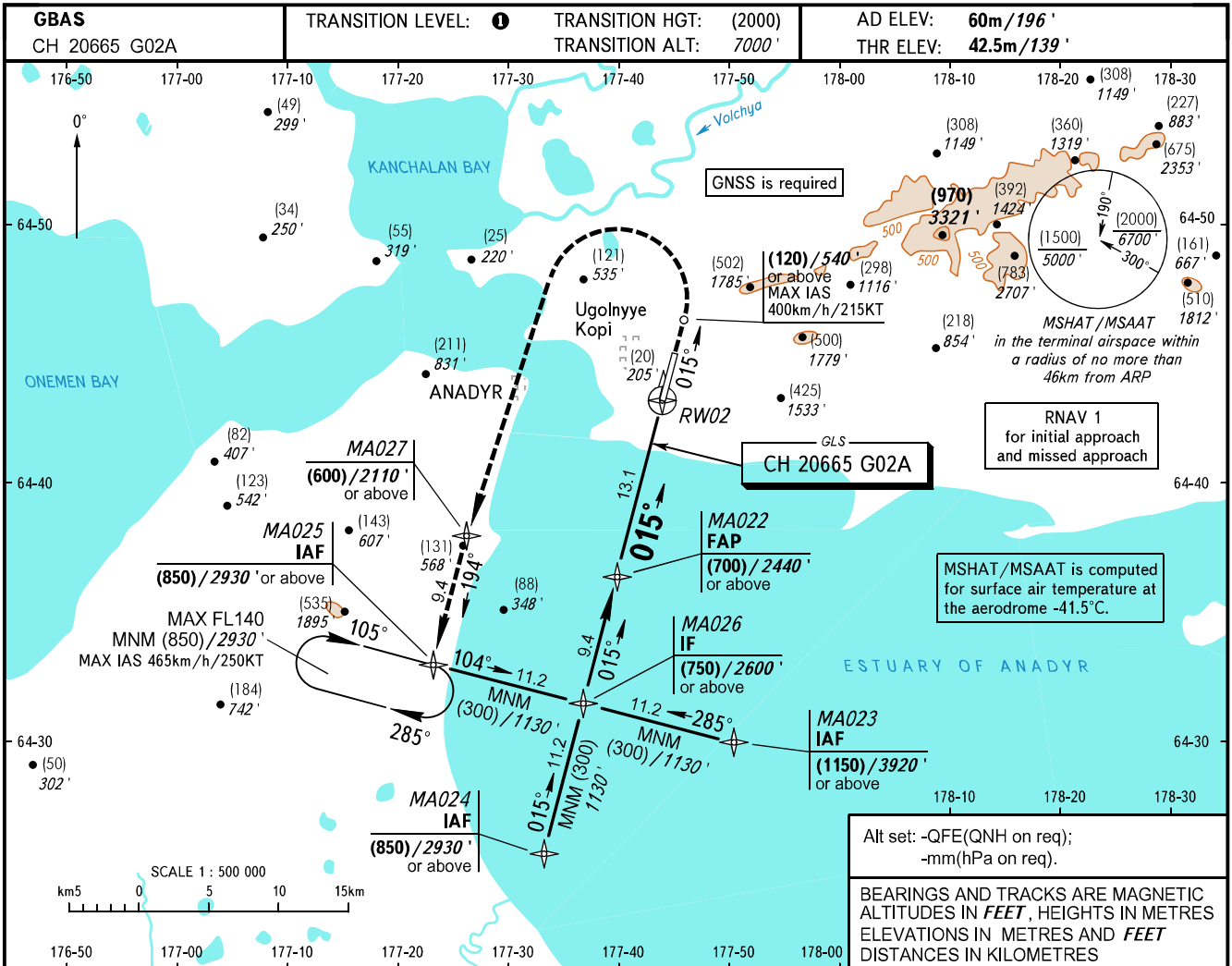


**INSTRUMENT
APPROACH
CHART - ICAO**

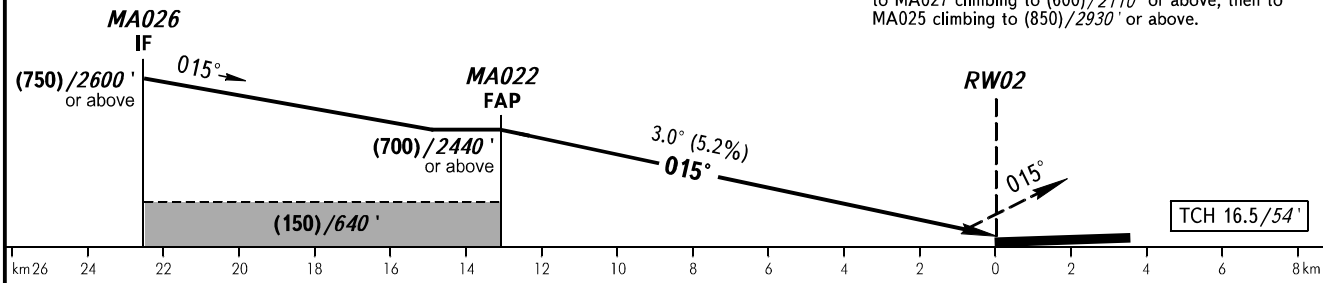
ANADYR APPROACH 120.500
ANADYR START 124.000

**ANADYR, RUSSIA
UGOLNY
GLS RWY 02**



DIST to RW02	9.0	6.0	3.0
HEIGHT/ALTITUDE	(487)/1738'	(330)/1222'	(173)/706'

MISSED APPROACH
Climb straight ahead to (120)/540' or above, turn LEFT to MA027 climbing to (600)/2110' or above, then to MA025 climbing to (850)/2930' or above.



OCA(H)		A	B	C	D
Straight-in	CAT I	102 (60) 335'	106 (64) 348'	109 (67) 358'	112 (70) 368'
	Approach				
Circling		180 (120) 600'	270 (210) 890'	355 (295) 1170'	355 (295) 1170'

TRANSITION LEVEL:
- FL080 when QFE is 760mm mercury column (1013 hPa) or above;
- FL090 when QFE is 733mm mercury column (977 hPa) or above, but less than 760mm mercury column (1013 hPa);
- FL100 when QFE is less than 733mm mercury column (977 hPa).

WARNING
Visual manoeuvring east of aerodrome is PROHIBITED.

GROUND SPEED	km/h	150	180	210	240	270	300	330	360
	kt	81	97	113	130	146	162	178	195
RATE OF DESCENT	m/s	2.2	2.6	3.0	3.5	3.9	4.3	4.8	5.2
	ft/min	427	512	597	682	768	853	938	1024

CHANGE: New chart