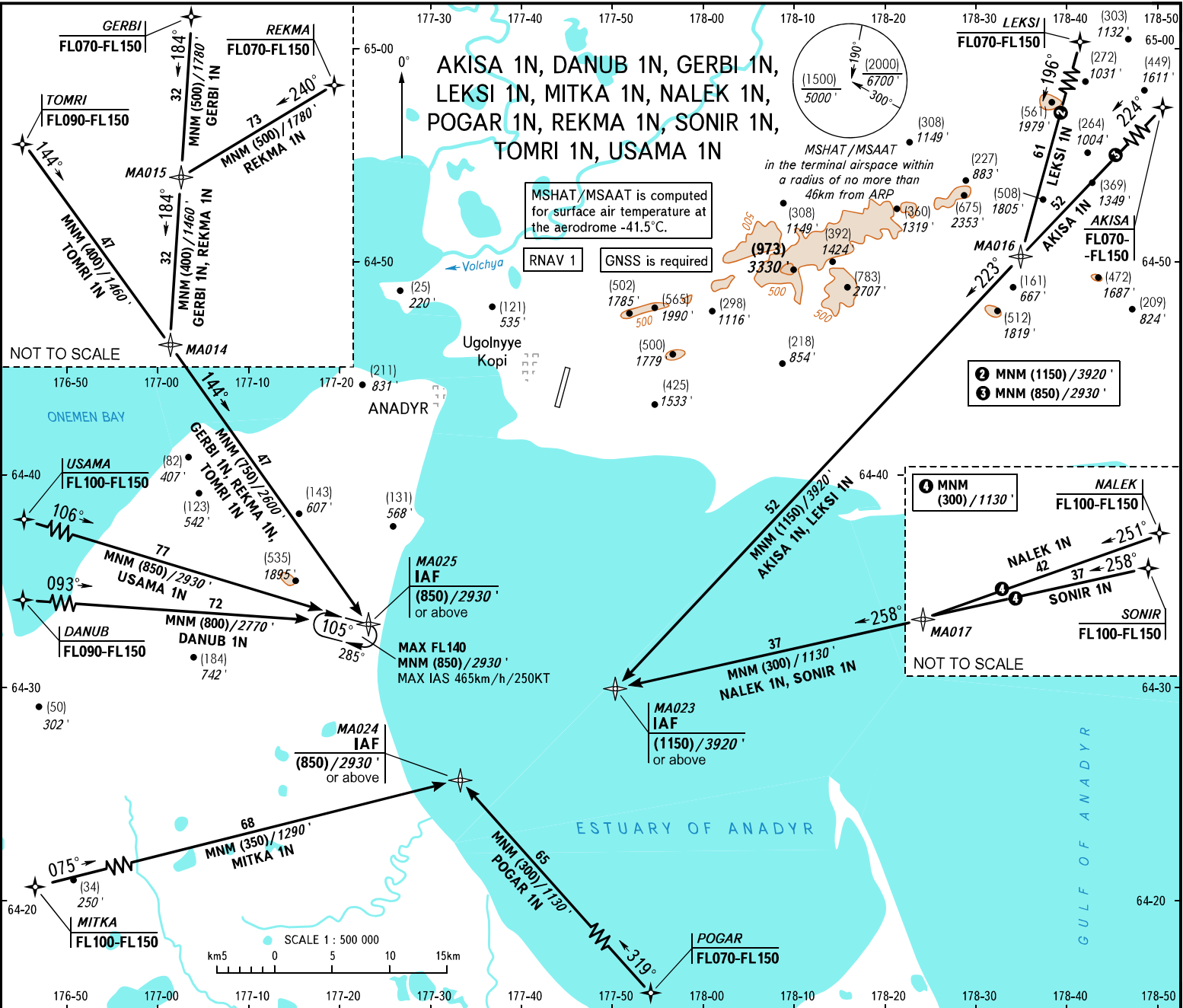


STANDARD ARRIVAL CHART
INSTRUMENT (STAR) - ICAO

TRANSITION
LEVEL: 1

ANADYR, RUSSIA
UGOLNYYE
RNAV RMY 02



ANADYR APPROACH
ANADYR START 120,500

BEARINGS AND TRACKS ARE MAGNETIC
HEIGHTS IN METRES, ALTITUDES IN FEET
ELEVATIONS IN METRES AND FEET
DISTANCES IN KILOMETRES

Alt set: -QFE/QNH on req.;
-mm(hPa on req.)

- ① TRANSITION LEVEL:
 - FL080 when QFE is 760mm mercury column (1013 hPa) or above;
 - FL090 when QFE is 733mm mercury column (977 hPa) or above, but less than 760mm mercury column (1013 hPa);
 - FL100 when QFE is less than 733mm mercury column (977 hPa).