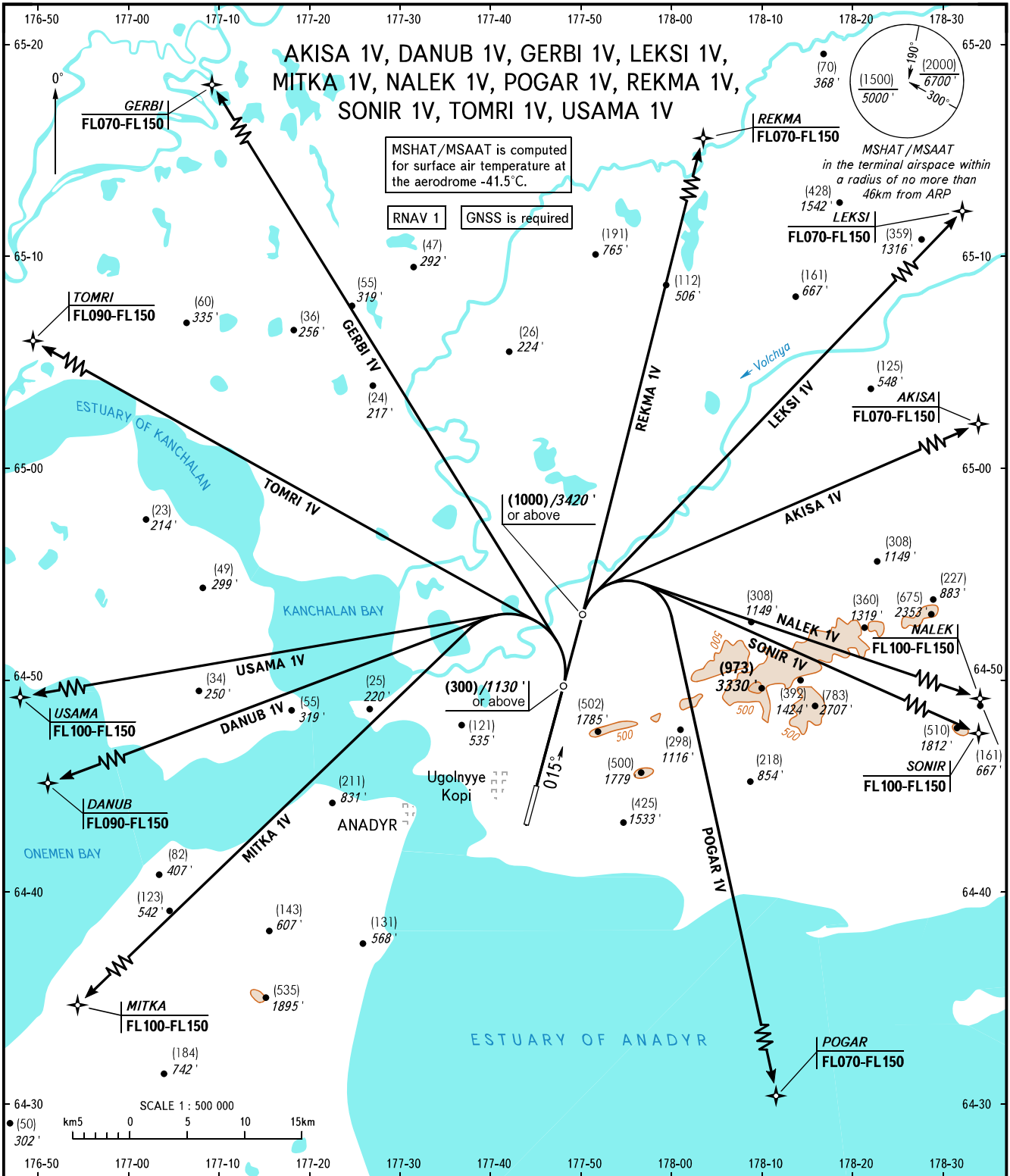


STANDARD DEPARTURE CHART
INSTRUMENT (SID) - ICAO

TRANSITION HGT: (2000)
TRANSITION ALT: 7000'

ANADYR, RUSSIA
UGOLNY
RNAV RWY 02



ANADYR START 124.000
ANADYR APPROACH 120.500

NOTE
Turn before passing DER is PROHIBITED.

BEARINGS AND TRACKS ARE MAGNETIC
HEIGHTS IN METRES, ALTITUDES IN FEET
ELEVATIONS IN METRES AND FEET
DISTANCES IN KILOMETRES

Alt set: -QFE(QNH on req);
-mm(hPa on req).

CHANGE: New chart