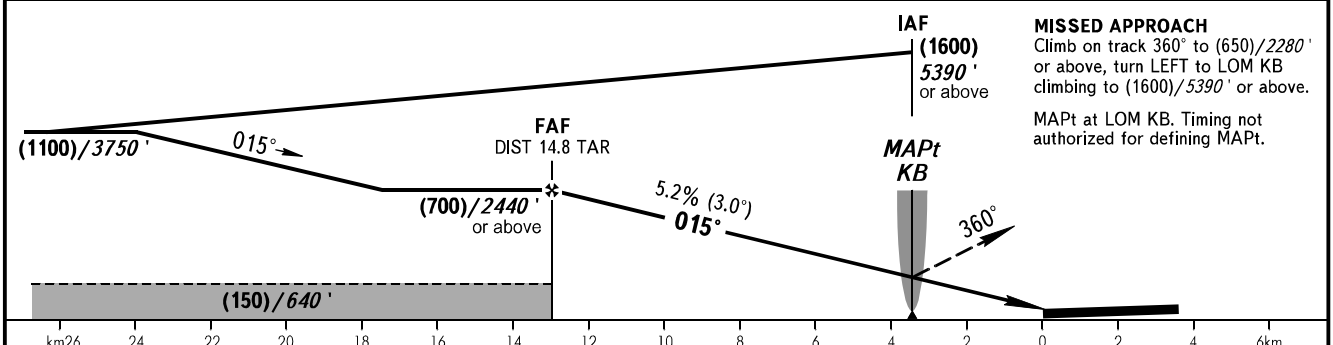
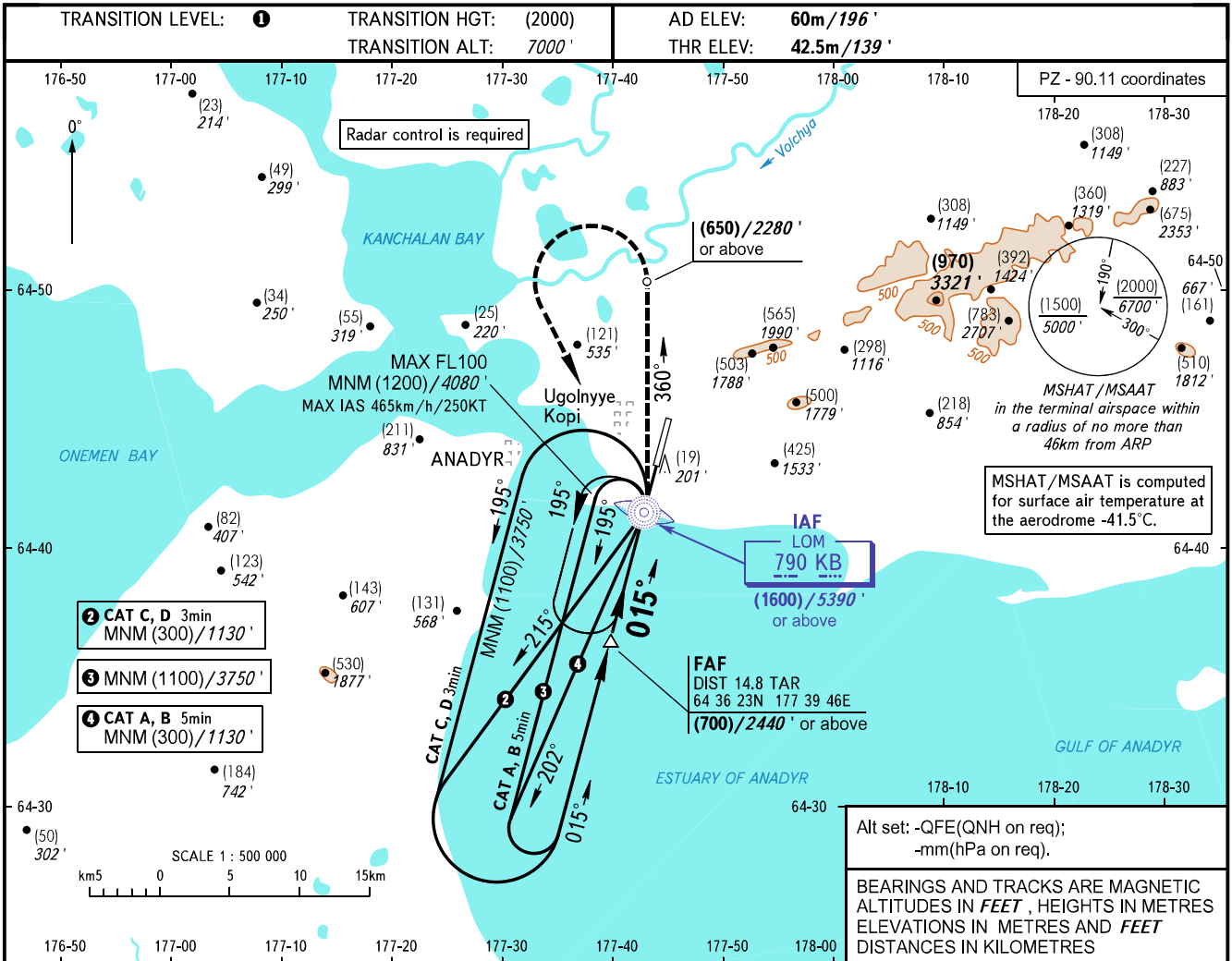


**INSTRUMENT
APPROACH
CHART - ICAO**

ANADYR APPROACH **120.500**
ANADYR START **124.000**

ANADYR, RUSSIA
UGOLNY
NDB RWY 02



OCA(H)		A	B	C	D
Straight-in	Approach	240 (200) 790'	240 (200) 790'	240 (200) 790'	240 (200) 790'
	Circling	240 (200) 790'	270 (210) 890'	355 (295) 1170'	355 (295) 1170'
GROUND SPEED	km/h	150	180	210	240
	kt	81	97	113	130
RATE OF DESCENT	m/s	2.2	2.6	3.0	3.5
	ft/min	427	512	597	682

① TRANSITION LEVEL:
- FL080 when QFE is 760mm mercury column (1013 hPa) or above;
- FL090 when QFE is 733mm mercury column (977 hPa) or above, but less than 760mm mercury column (1013 hPa);
- FL100 when QFE is less than 733mm mercury column (977 hPa).

NOTE:
1. Turn before passing MAPt is PROHIBITED.
2. Zero range of TAR is indicated at ARP.

WARNING
Visual manoeuvring east of aerodrome is PROHIBITED.

CHANGE: New chart