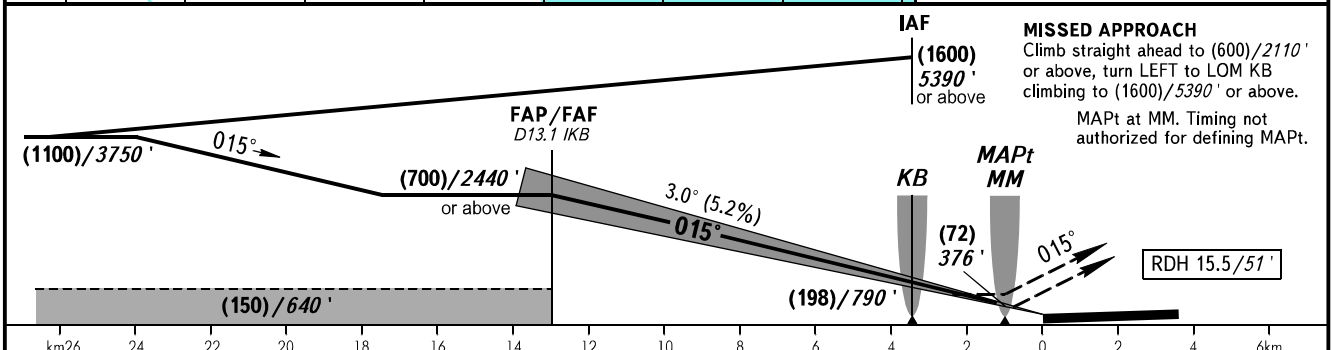
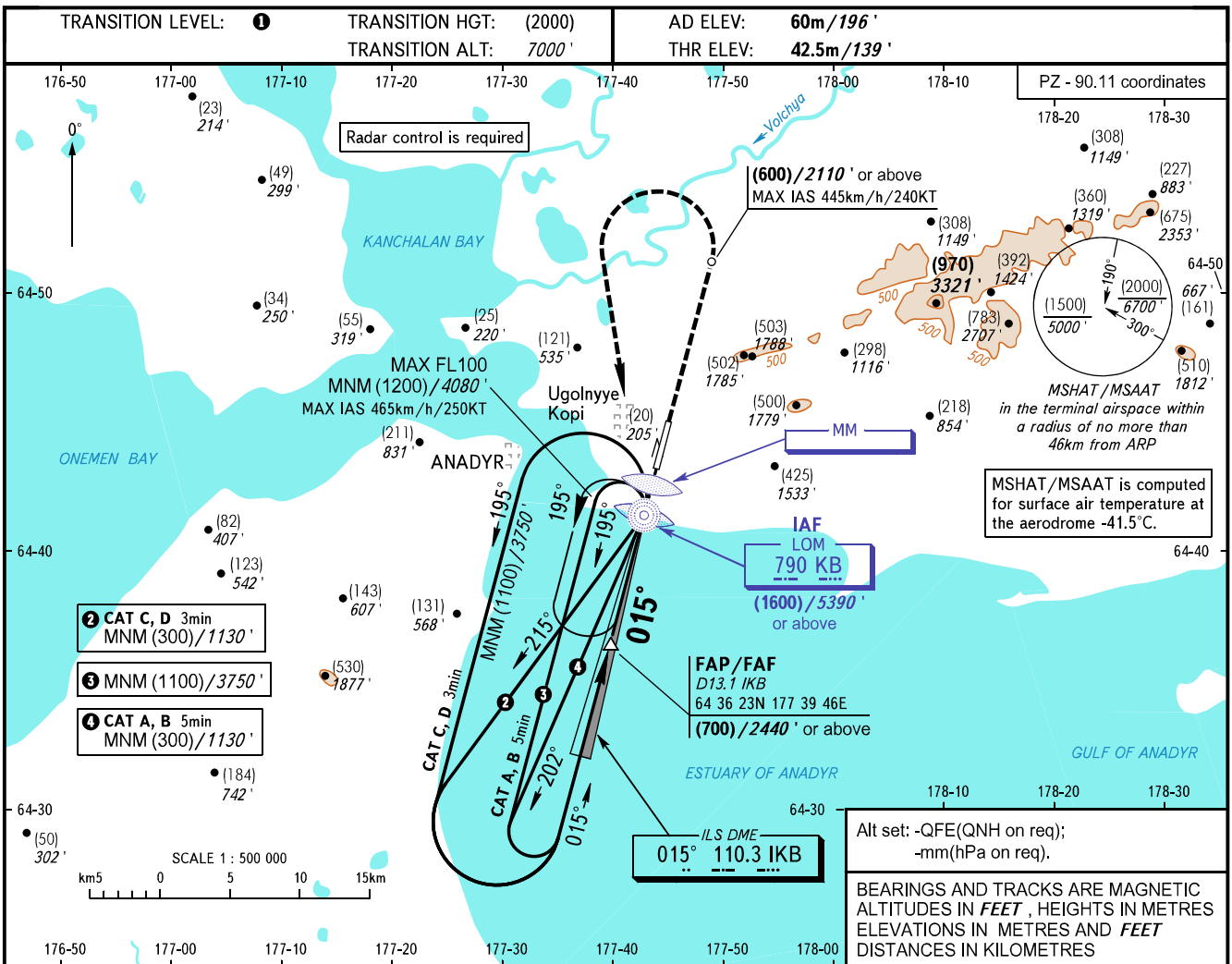


**INSTRUMENT
APPROACH
CHART - ICAO**

ANADYR APPROACH **120.500**
ANADYR START **124.000**

ANADYR, RUSSIA
UGOLNY
ILS X CAT I, LOC X RWY 02



OCA(H)		A	B	C	D					
Straight-in	CAT I	102 (60) 335'	106 (64) 348'	109 (67) 358'	112 (70) 368'					
	LOC	135 (90) 450'	135 (90) 450'	135 (90) 450'	135 (90) 450'					
Circling		180 (120) 600'	270 (210) 890'	355 (295) 1170'	355 (295) 1170'					
GROUND SPEED	km/h		150	180	210	240	270	300	330	360
	kt		81	97	113	130	146	162	178	195
RATE OF DESCENT	m/s		2.2	2.6	3.0	3.5	3.9	4.3	4.8	5.2
	ft/min		427	512	597	682	768	853	938	1024

① TRANSITION LEVEL:
- FL080 when QFE is 760mm mercury column (1013 hPa) or above;
- FL090 when QFE is 733mm mercury column (977 hPa) or above, but less than 760mm mercury column (1013 hPa);
- FL100 when QFE is less than 733mm mercury column (977 hPa).

NOTE:
1. Turn before passing MAPt is PROHIBITED.
2. Zero range of DME IKB is indicated at RWY 02 THR.

WARNING
Visual manoeuvring east of aerodrome is PROHIBITED.

CHANGE: New chart