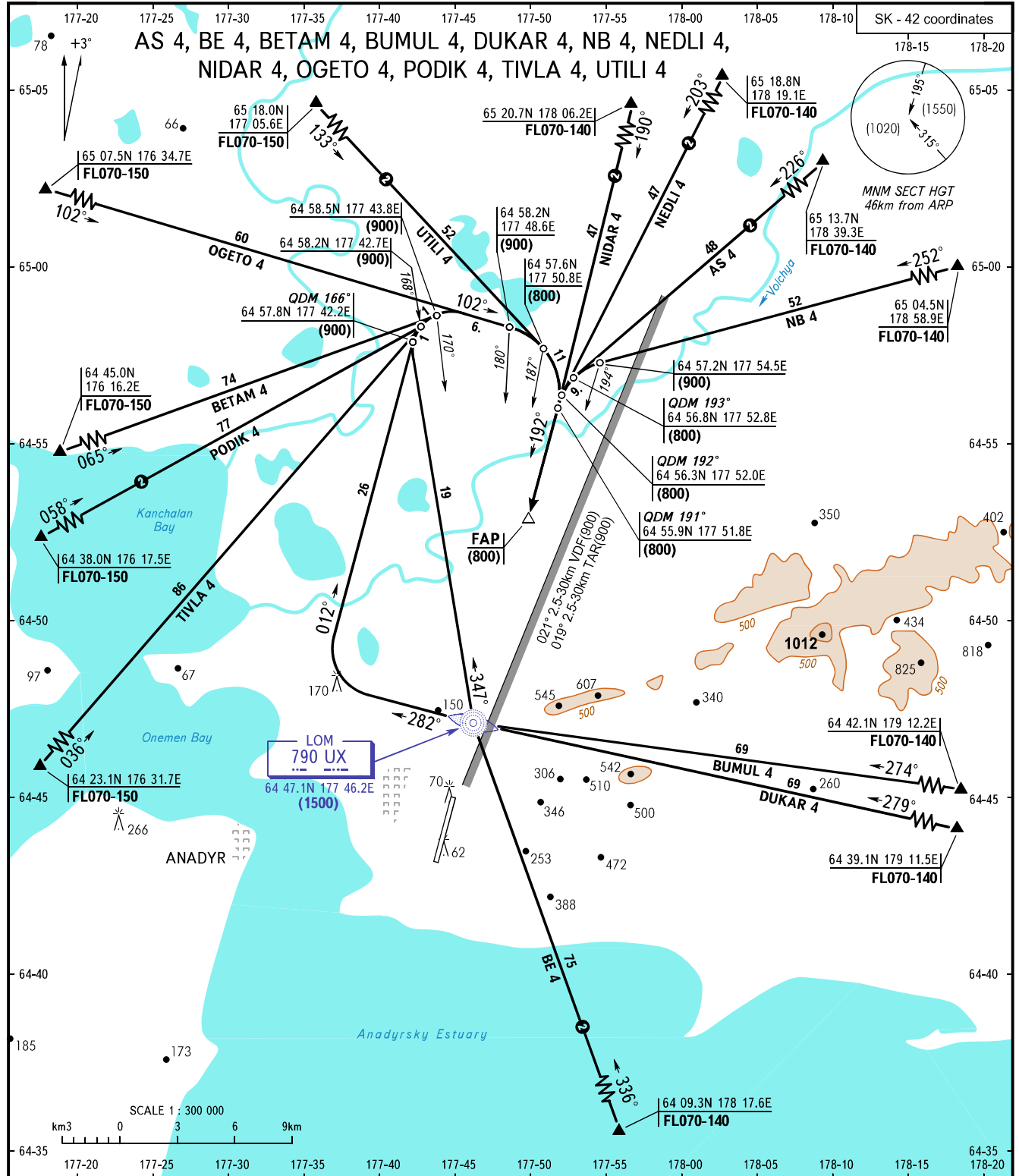


STANDARD ARRIVAL CHART  
INSTRUMENT (STAR) - ICAO

ANADYR, RUSSIA  
UGOLNY  
RWY 19

TRANSITION  
LEVEL: 1



APPROACH TOWER 124.000  
TOWER 124.000

- 1 TRANSITION LEVEL:  
- FL070 when atmospheric pressure is 755mm mercury column or above;  
- FL080 when atmospheric pressure is less than 755mm mercury column, but equal or above 728mm mercury column;  
- FL090 when atmospheric pressure is less than 728mm mercury column.
- 2 Only for Russian users of airspace.

WARNING:  
1. Heavy turbulence with down-flows may be expected on final.  
2. When radar control is not provided, cross LOM (LMM) at TL, descending turn right and execute rectangular traffic pattern approach.

BEARINGS AND TRACKS ARE MAGNETIC  
ALTITUDES, HEIGHTS AND ELEVATIONS ARE IN METRES  
DISTANCES ARE IN KILOMETRES

CHANGE: FL 2