

STANDARD ARRIVAL CHART
INSTRUMENT (STAR) - ICAO

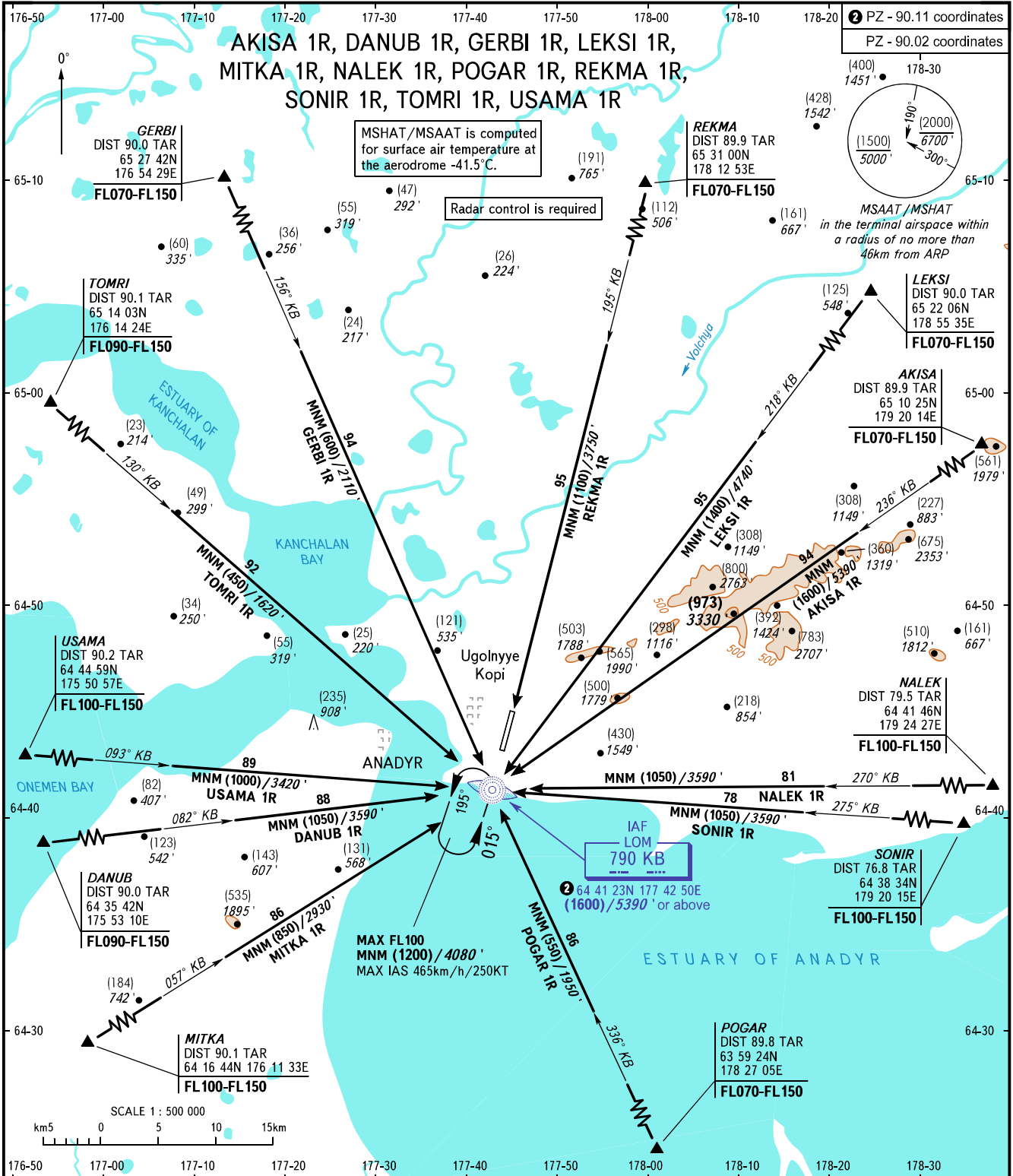
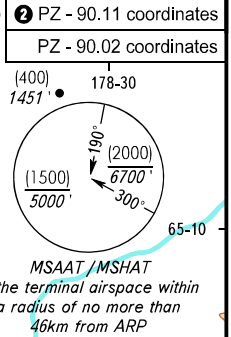
ANADYR, RUSSIA
UGOLNY
RWY 02

TRANSITION
LEVEL: 1

AKISA 1R, DANUB 1R, GERBI 1R, LEKSI 1R,
MITKA 1R, NALEK 1R, POGAR 1R, REKMA 1R,
SONIR 1R, TOMRI 1R, USAMA 1R

MSHAT/MSAAT is computed
for surface air temperature at
the aerodrome -41.5°C.

Radar control is required



ANADYR APPROACH 120.500
ANADYR START 124.000

1 TRANSITION LEVEL:
- FL080 when QFE is 760mm mercury column (1013 hPa) or above;
- FL090 when QFE is 733mm mercury column (977 hPa) or above,
but less than 760mm mercury column (1013 hPa);
- FL100 when QFE is less than 733mm mercury column (977 hPa).

NOTE
TAR distance is indicated from ARP.

BEARINGS AND TRACKS ARE MAGNETIC
HEIGHTS IN METRES, ALTITUDES IN FEET
ELEVATIONS IN METRES AND FEET
DISTANCES IN KILOMETRES

Alt set: -QFE(QNH on req);
-mm(hPa on req).