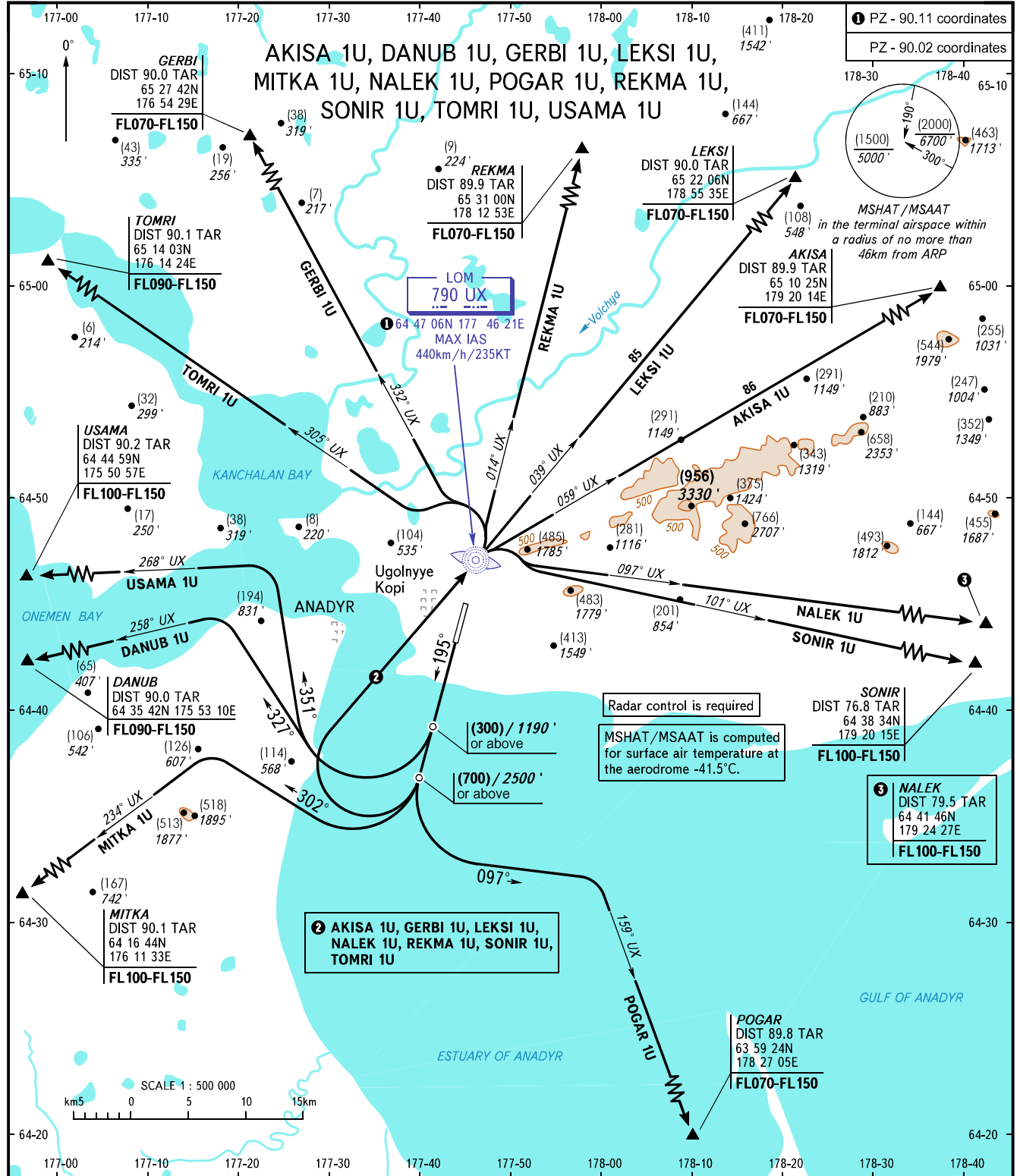


STANDARD DEPARTURE CHART
INSTRUMENT (SID) - ICAO

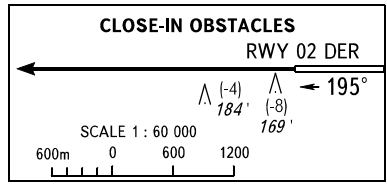
ANADYR, RUSSIA
UGOLNY
RWY 20

TRANSITION HGT: (2000)
TRANSITION ALT: 7000'



ANADYR START 124.000
ANADYR APPROACH 120.500

NOTE:
1. Turn before passing DER is PROHIBITED.
2. TAR distance is indicated from ARP.



BEARINGS AND TRACKS ARE MAGNETIC
HEIGHTS IN METRES, ALTITUDES IN FEET
ELEVATIONS IN METRES AND FEET
DISTANCES IN KILOMETRES

Alt set: -QFE(QNH on req);
-mm(hPa on req).