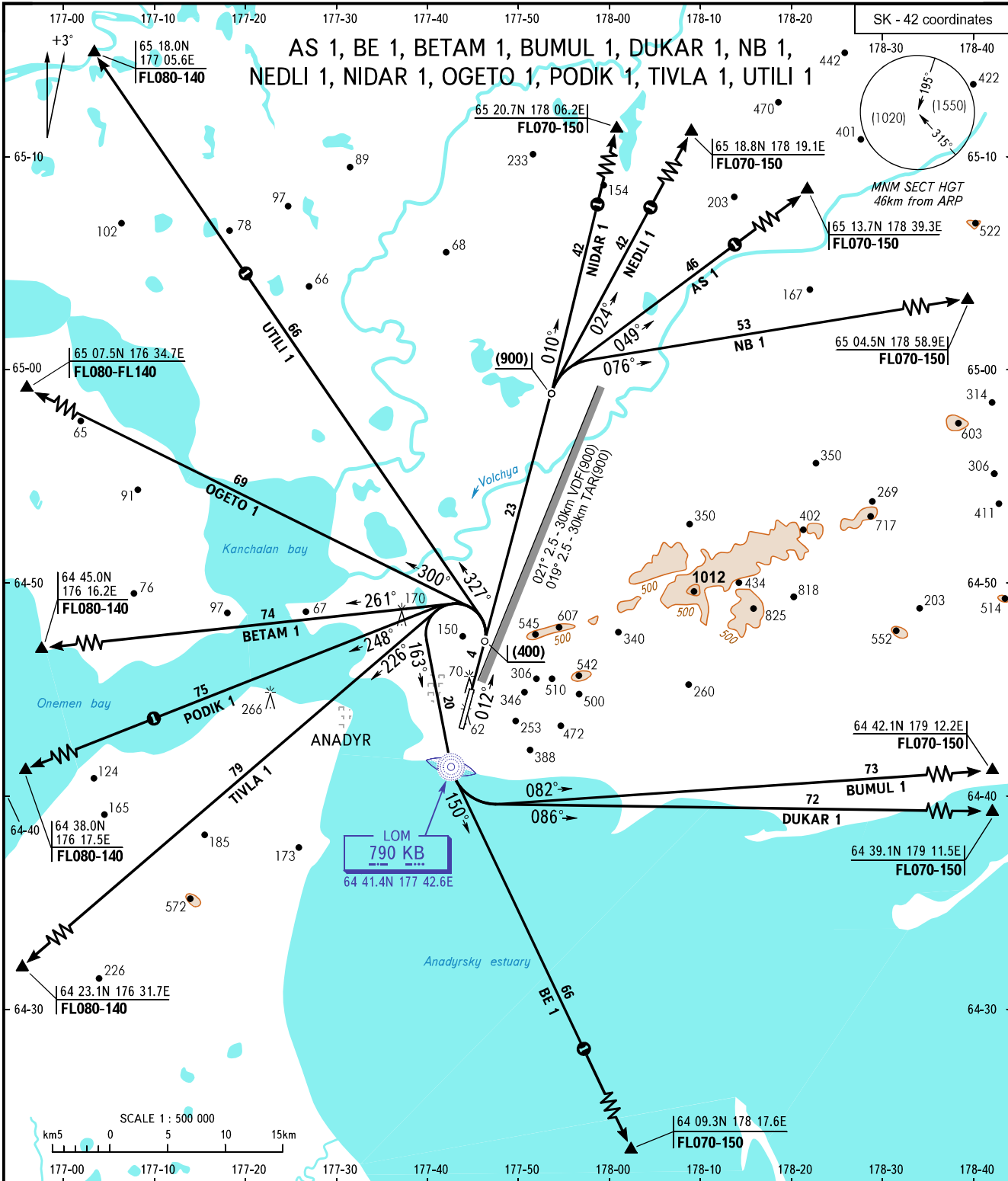


STANDARD DEPARTURE CHART
INSTRUMENT (SID) - ICAO

TRANSITION
HEIGHT : (1600)

ANADYR, RUSSIA
UGOLNY
RWY 01



START 124.000
APPROACH 124.000

① Only for Russian users of airspace.

WARNING

Heavy turbulence with down-flows
may be expected during climbing.

BEARINGS AND TRACKS ARE MAGNETIC
ALTITUDES, HEIGHTS AND ELEVATIONS ARE IN METRES
DISTANCES ARE IN KILOMETRES