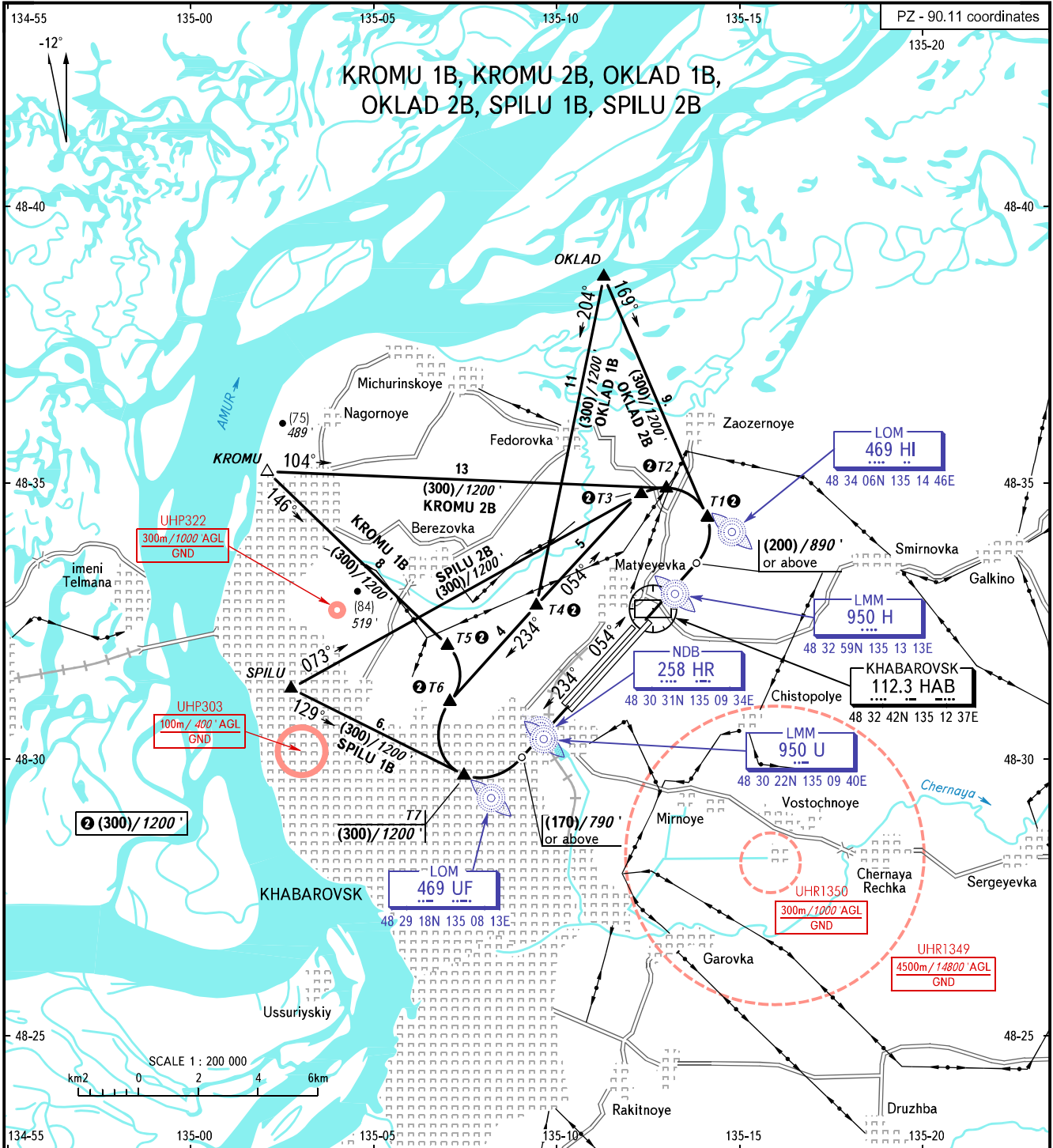


VFR
ARRIVAL
CHART

KHABAROVSK, RUSSIA
NOVY
RWY 05L/23R, 05R/23L

TRANSITION
LEVEL: **1**

PZ - 90.11 coordinates



1 TRANSITION LEVEL:

- FL060 when QFE is 753mm (1004 hPa) mercury column or above;
- FL070 when QFE is less than 753mm (1004 hPa) mercury column.

MISSED APPROACH:

RWY 05L, 05R: Climb to (150)/730' in the day-time/(250)/1050' at night, after passing RWY 05L, 05R THR turn LEFT onto track 324° climbing to (300)/1200', then proceed according to chart or as instructed by the ATS unit.
 RWY 23L, 23R: Climb to (150)/730' in the day-time (250)/1050' at night, after passing RWY 23L, 23R THR turn RIGHT onto track 324° climbing to (300)/1200', then proceed according to chart or as instructed by the ATS unit.

WARNING:

1. MAX IAS for flights in the aerodrome traffic circuit 250km/h/135KT.
2. ACFT shall descend from the aerodrome traffic circuit height (300)/1200' when proceeding from base turn to final turn after intercepting track 144° MAG to join RWY 05L, 05R, RWY 23L, 23R final approach segment.
3. Obstacle clearance of 500m or above horizontally is required for flights under VFR.

BEARINGS AND TRACKS ARE MAGNETIC
ALTITUDES IN FEET
HEIGHTS IN METRES
ELEVATIONS IN METRES AND FEET
DISTANCES IN KILOMETRES

Alt set: -QFE(QNH on req);
-mm(hPa on req).

CHANGE.COM