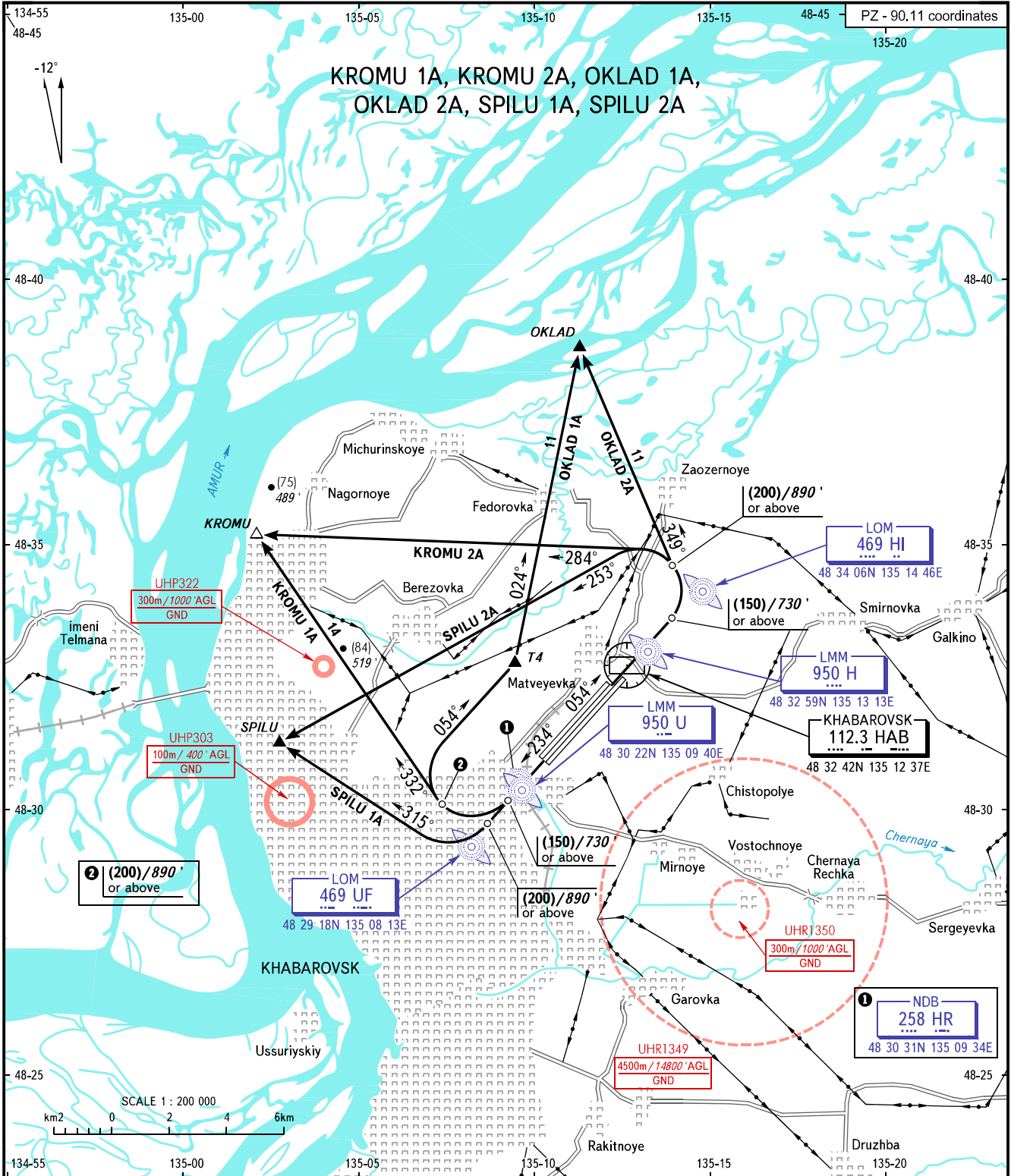


VFR
DEPARTURE
CHART

KHABAROVSK, RUSSIA
NOVY
RWY 05L/23R, 05R/23L

TRANSITION HGT : (1400)
TRANSITION ALT : 4850'



START	119.300
GROUND	121.800 By ATC
RADAR	120.300
APPROACH	125.200

- WARNING:**
1. MAX IAS for flights in the aerodrome traffic circuit 250km/h/135KT.
 2. Turn before DER is PROHIBITED.
 3. At night, initial turn after take-off at (250)/1050' or above.
 4. MAX climb gradient required after take-off from RWY 23L, 23R.
 5. Obstacle clearance of 500m or above horizontally is required for flights under VFR.

BEARINGS AND TRACKS ARE MAGNETIC
ALTITUDES IN FEET
HEIGHTS IN METRES
ELEVATIONS IN METRES AND FEET
DISTANCES IN KILOMETRES

Alt set: -QFE(QNH on req);
-mm(hPa on req).

CHANGE.COM