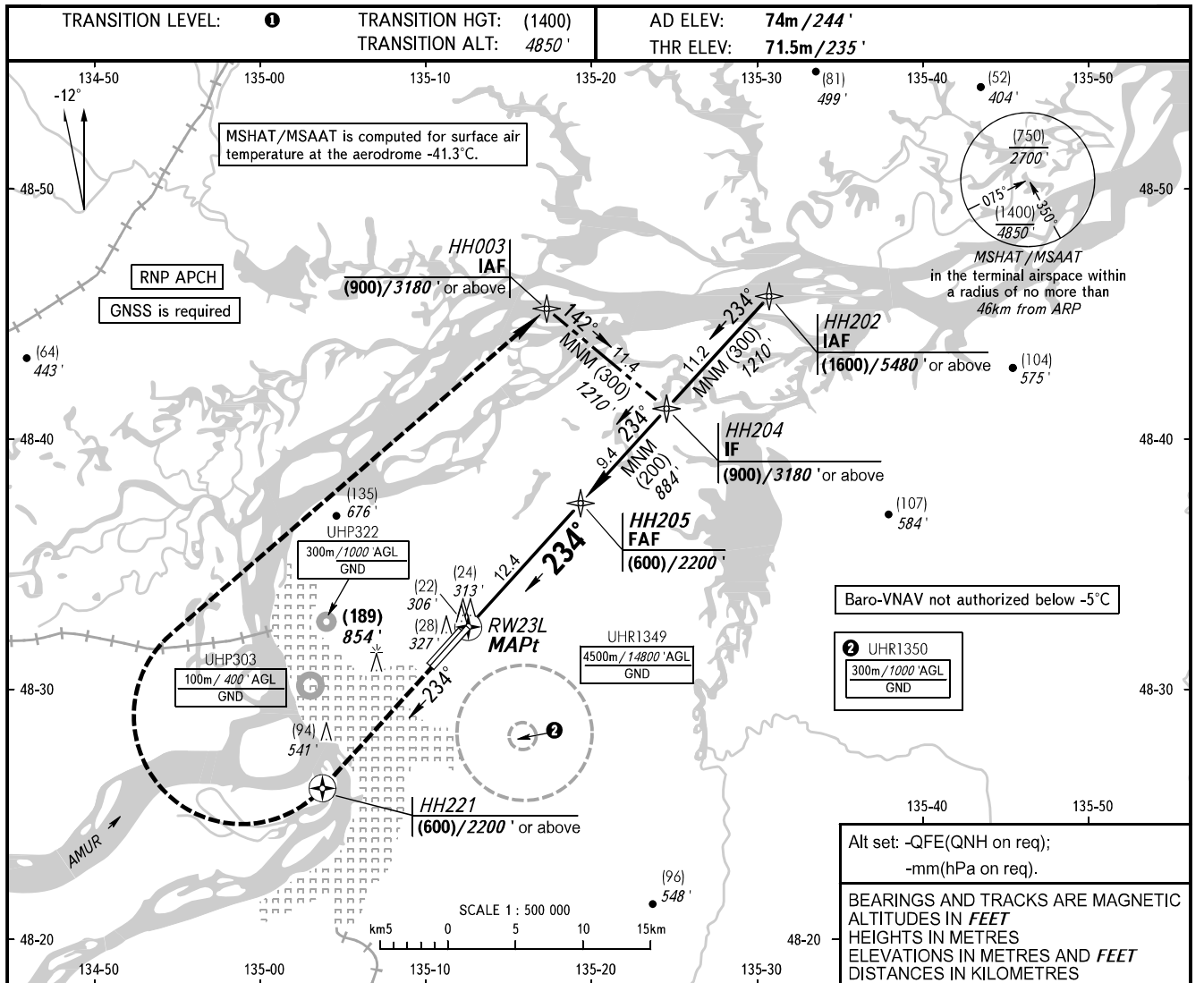


**INSTRUMENT
APPROACH
CHART - ICAO**

APPROACH	125.200
RADAR	120.300
PRECISION	119.300
GROUND	121.800 By ATC

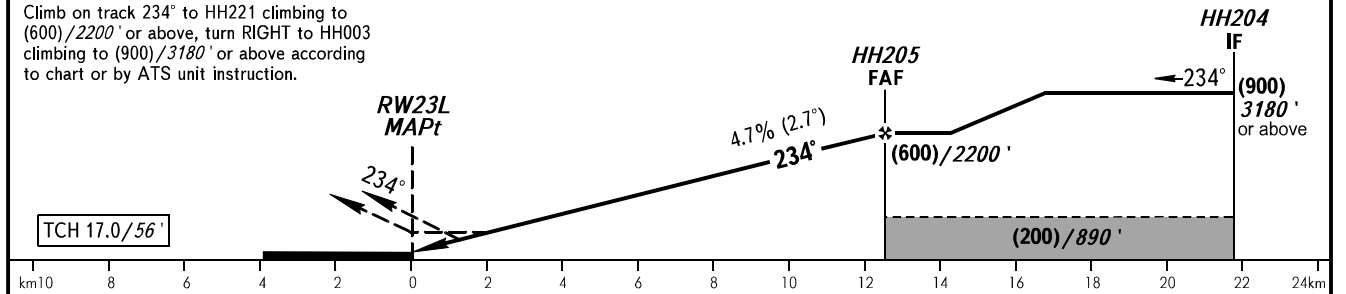
KHABAROVSK, RUSSIA
NOVY
RNP RWY 23L



DIST to RW23L	2.0	4.0	6.0	8.0	10.0	12.0
HEIGHT/ALTITUDE	(110)/590'	(205)/900'	(300)/1210'	(395)/1520'	(485)/1830'	(580)/2140'

MISSED APPROACH

Climb on track 234° to HH221 climbing to (600)/2200' or above, turn RIGHT to HH003 climbing to (900)/3180' or above according to chart or by ATS unit instruction.



OCA(H)		A	B	C	D	① TRANSITION LEVEL:					
Straight-in Approach	LNAV	175(105) 580'	175(105) 580'	175(105) 580'	175(105) 580'	- FLO60 when QFE is 753mm mercury column (1004 hPa) or above;					
	LNAV/VNAV	145(75) 480'	150(80) 500'	150(80) 500'	155(85) 510'	- FLO70 when QFE is less than 753mm mercury column (1004 hPa).					
		NOTE:					1. Visual manoeuvring is PROHIBITED.				
		2. MAPt at RW23L. Timing not authorized for defining MAPt.									
GROUND SPEED	km/h	150	180	210	240	270	300	330	360	390	
	kt	81	97	113	130	146	162	178	194	211	
RATE OF DESCENT	m/s	2.0	2.4	2.7	3.1	3.5	3.9	4.3	4.7	5.1	
	ft/min	385	463	540	617	694	771	848	925	1002	