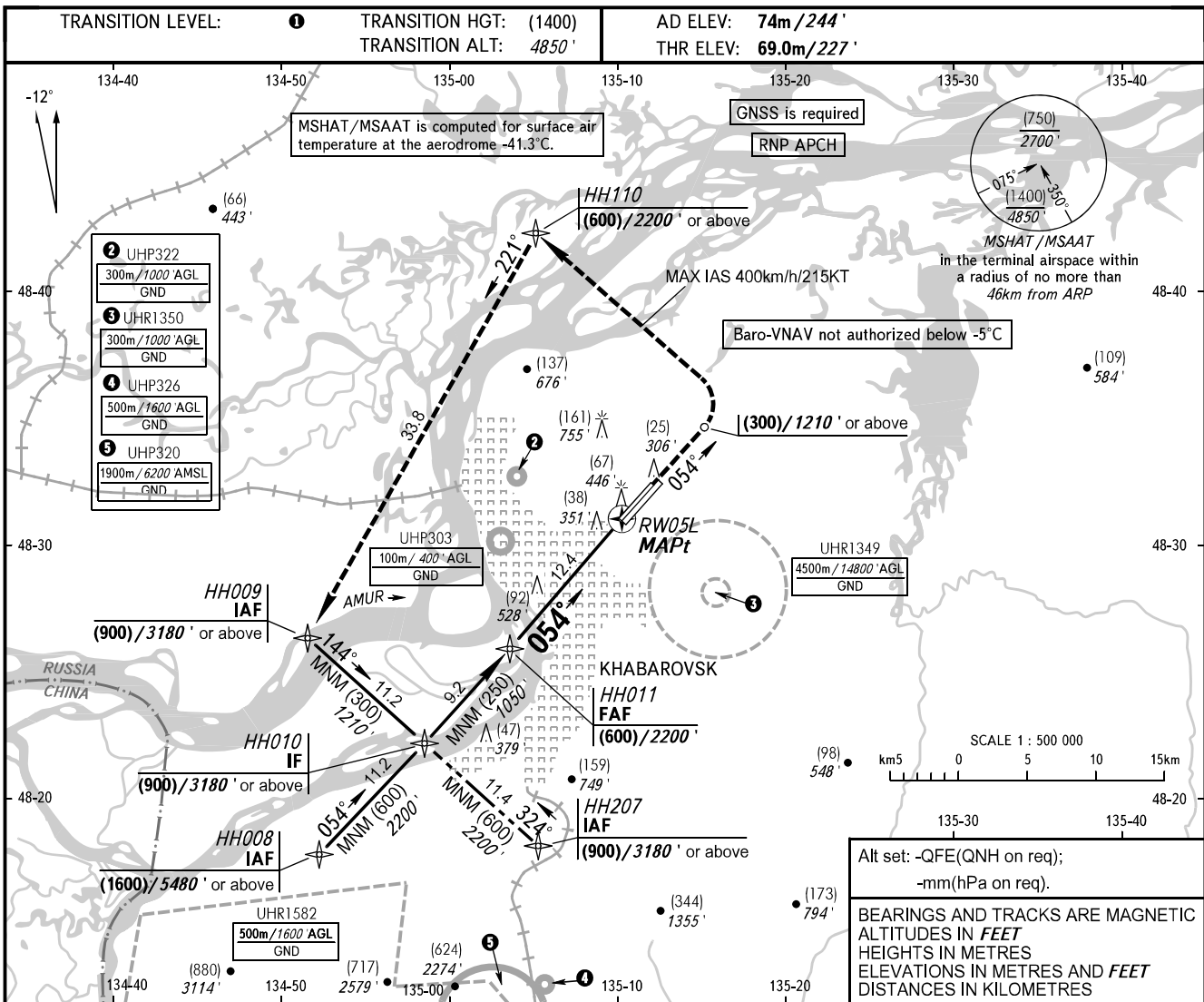


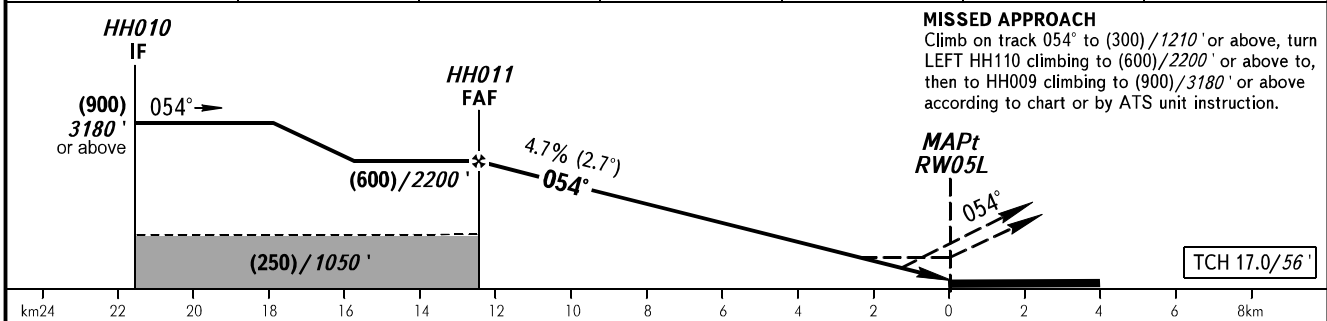
**INSTRUMENT  
APPROACH  
CHART - ICAO**

APPROACH	125.200
RADAR	120.300
PRECISION	119.300
GROUND	121.800 By ATC

**KHABAROVSK, RUSSIA  
NOVY  
RNP RWY 05L**



DIST to RW05L	12.0	10.0	8.0	6.0	4.0	2.0
HEIGHT/ALTITUDE	(580)/2140'	(485)/1830'	(395)/1520'	(300)/1210'	(205)/900'	(110)/590'



OCA(H)		A	B	C	D					
Straight-in Approach	LNAV	235(170) 770'	235(170) 770'	235(170) 770'	235(170) 770'					
	LNAV/VNAV	180(115) 590'	185(120) 610'	185(120) 610'	190(120) 630'					
GROUND SPEED	km/h	150	180	210	240	270	300	330	360	390
	kt	81	97	113	130	146	162	178	194	211
RATE OF DESCENT	m/s	2.0	2.4	2.7	3.1	3.5	3.9	4.3	4.7	5.1
	ft/min	385	463	540	617	694	771	848	925	1002

**① TRANSITION LEVEL:**  
- FLO60 when QFE is 753mm mercury column (1004 hPa) or above;  
- FLO70 when QFE is less than 753mm mercury column (1004 hPa).

**NOTE:**  
1. Visual manoeuvring is PROHIBITED.  
2. MAPt at RW05L. Timing not authorized for defining MAPt.

CHANGE: COM, MSHAT/MSAAT