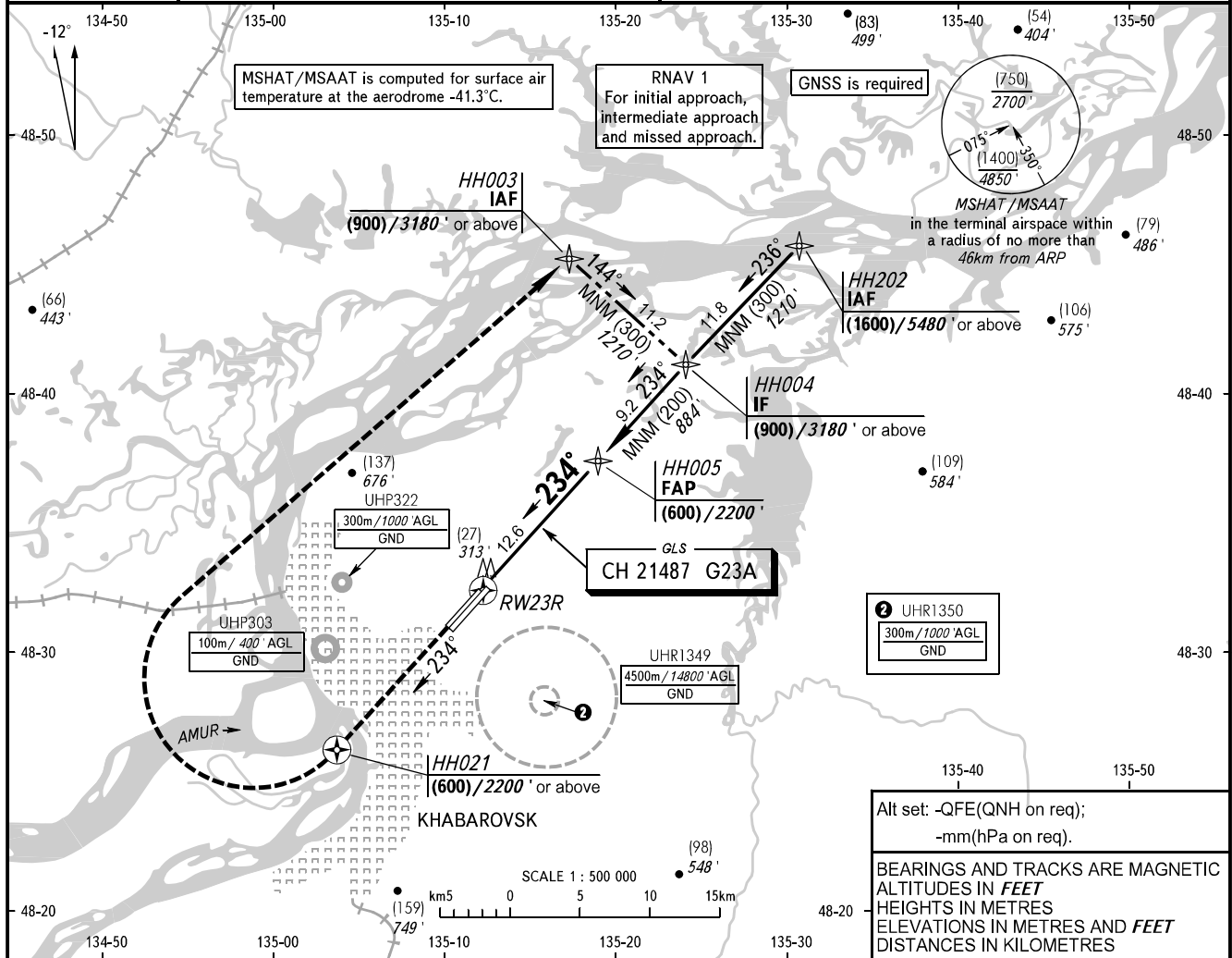


INSTRUMENT
APPROACH
CHART - ICAO

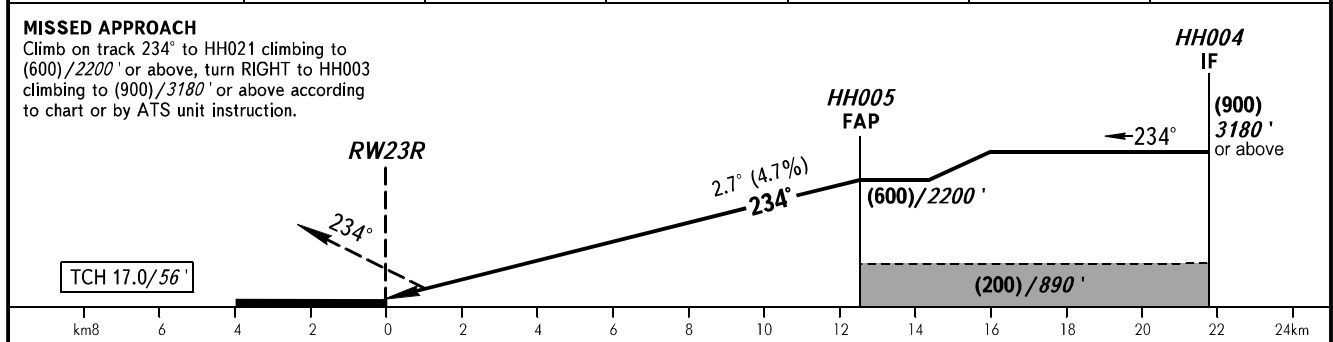
APPROACH	125.200
RADAR	120.300
PRECISION	119.300
GROUND	121.800 By ATC

KHABAROVSK, RUSSIA
NOVY
GLS RWY 23R

GBAS CH 21487 G23A	TRANSITION LEVEL: ①	TRANSITION HGT: (1400)	AD ELEV: 74m / 244'
		TRANSITION ALT: 4850'	THR ELEV: 69.0m / 227'



DIST TO RW23R	2.0	4.0	6.0	8.0	10.0	12.0
HEIGHT/ALTITUDE	(110)/590'	(205)/900'	(300)/1210'	(395)/1520'	(485)/1830'	(580)/2140'



OCA(H)		A	B	C	D	① TRANSITION LEVEL: - FL060 when QFE is 753mm mercury column (1004 hPa) or above; - FL070 when QFE is less than 753mm mercury column (1004 hPa). NOTE Visual manoeuvring is PROHIBITED.				
Straight-in Approach	CAT I	129(60) 423'	129(60) 423'	129(60) 423'	129(60) 423'					
GROUND SPEED	km/h	150	180	210	240	270	300	330	360	390
	kt	81	97	113	130	146	162	178	194	211
RATE OF DESCENT	m/s	2.0	2.4	2.7	3.1	3.5	3.9	4.3	4.7	5.1
	ft/min	385	463	540	617	694	771	848	925	1002