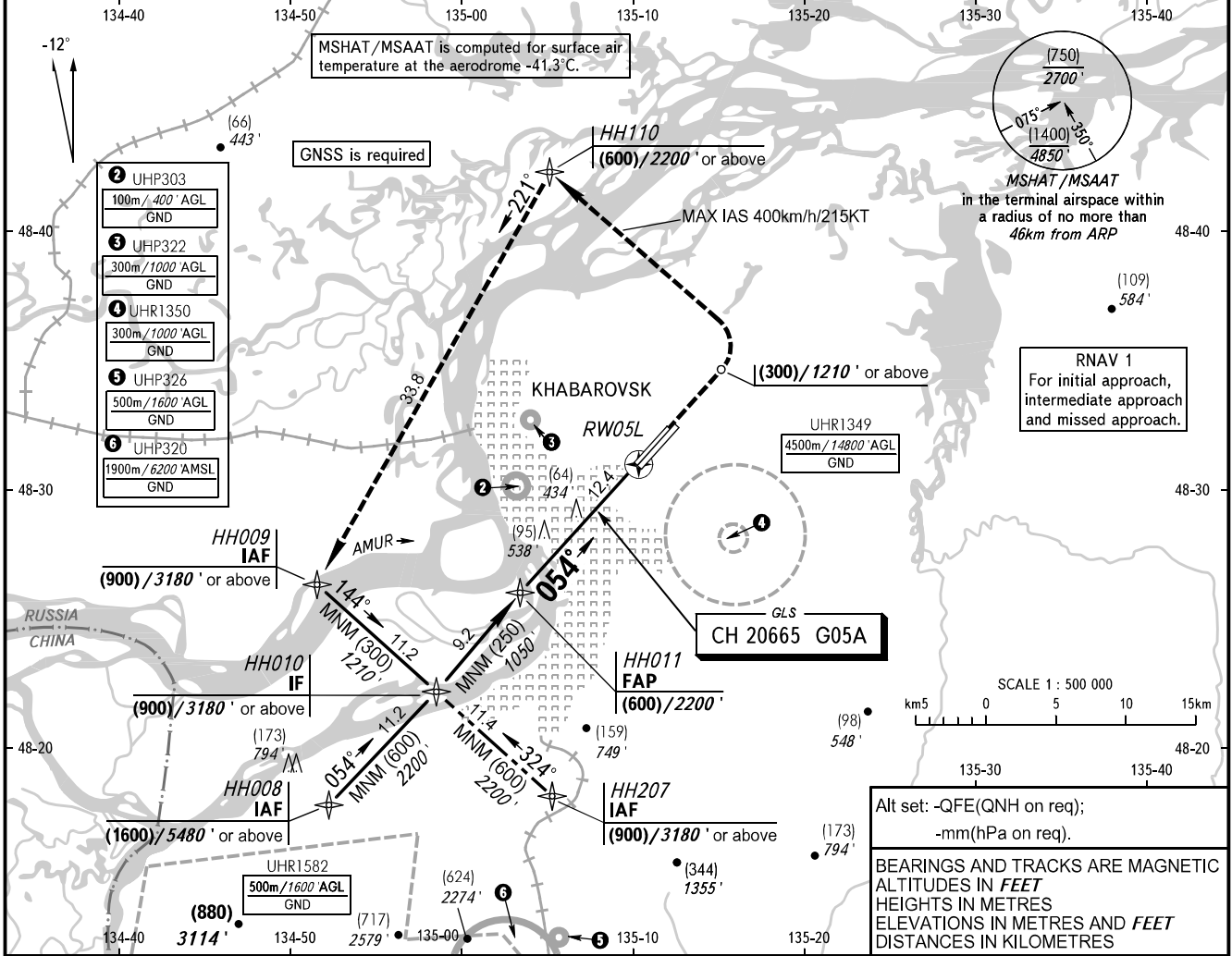


**INSTRUMENT
APPROACH
CHART - ICAO**

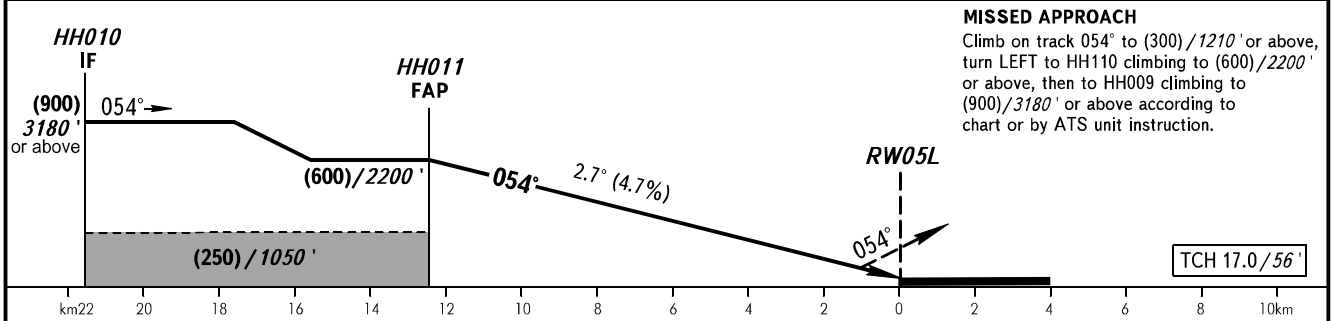
**KHABAROVSK, RUSSIA
NOVY
GLS RWY 05L**

APPROACH	125.200
RADAR	120.300
PRECISION	119.300
GROUND	121.800 By ATC

GBAS CH 20665 G05A	TRANSITION LEVEL: 1	TRANSITION HGT: (1400)	AD ELEV: 74m / 244'
		TRANSITION ALT: 4850'	THR ELEV: 69.0m / 227'



DIST to RW05L	12.0	10.0	8.0	6.0	4.0	2.0
HEIGHT/ALTITUDE	(580)/2140'	(485)/1830'	(395)/1520'	(300)/1210'	(205)/900'	(110)/590'



OCA(H)		A	B	C	D	1 TRANSITION LEVEL: - FLO60 when QFE is 753mm mercury column (1004 hPa) or above; - FLO70 when QFE is less than 753mm mercury column (1004 hPa). NOTE Visual manoeuvring is PROHIBITED.					
Straight-in Approach	CAT I	128(60) 420'	128(60) 420'	128(60) 420'	128(60) 420'						
GROUND SPEED		km/h	150	180	210	240	270	300	330	360	390
		kt	81	97	113	130	146	162	178	194	211
RATE OF DESCENT		m/s	2.0	2.4	2.7	3.1	3.5	3.9	4.3	4.7	5.1
		ft/min	385	463	540	617	694	771	848	925	1002