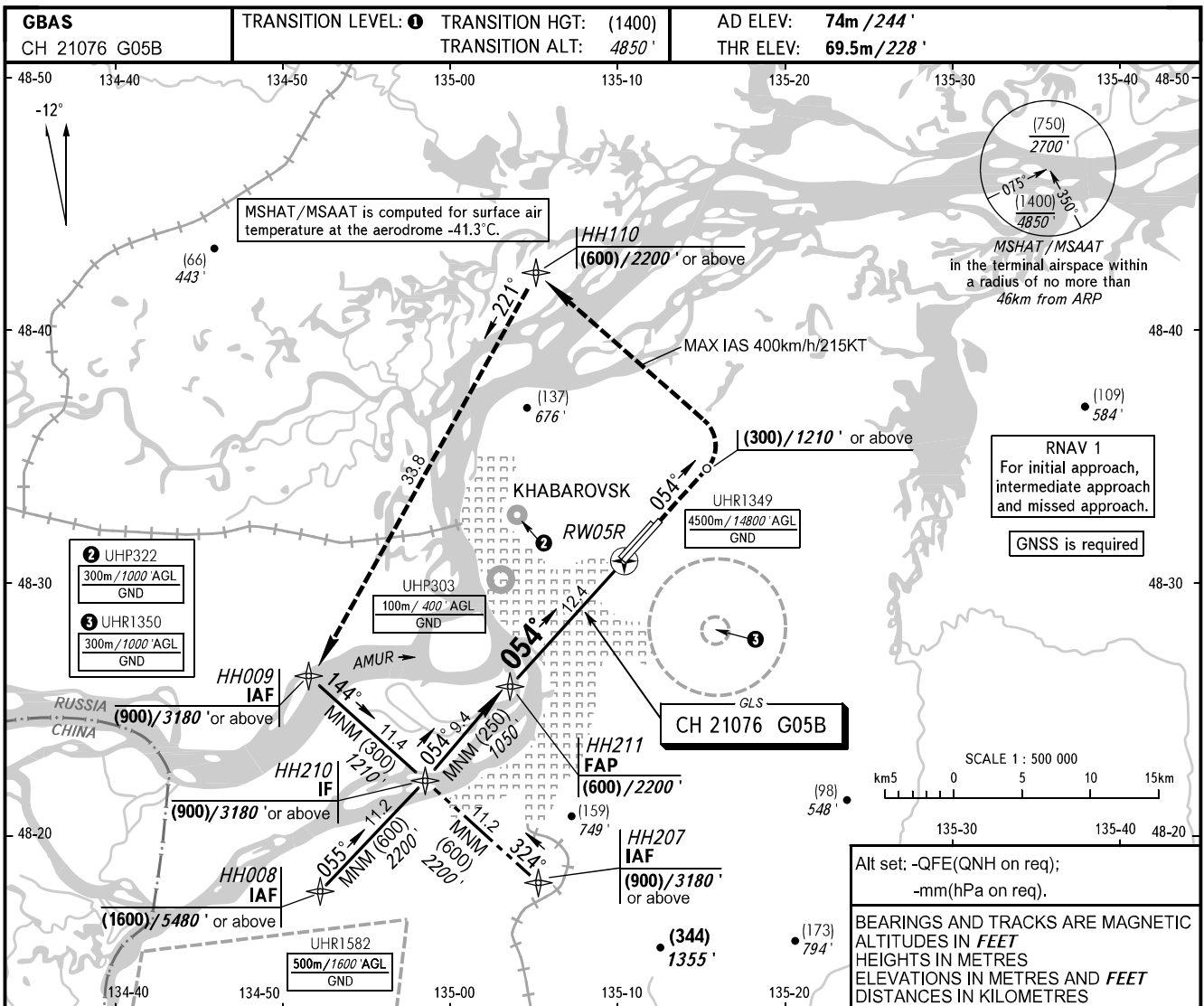


INSTRUMENT  
APPROACH  
CHART - ICAO

APPROACH	125.200
RADAR	120.300
PRECISION	119.300
GROUND	121.800 By ATC

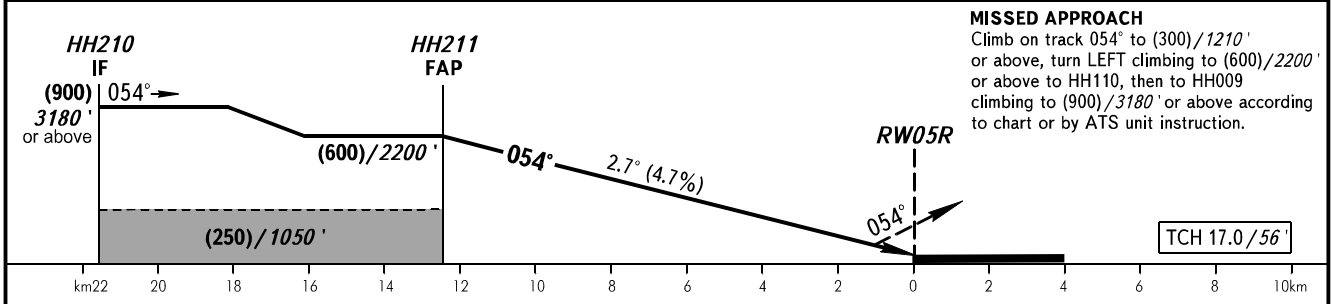
KHABAROVSK, RUSSIA  
NOVY  
GLS RWY 05R



Alt set: -QFE(QNH on req);  
-mm(hPa on req).

BEARINGS AND TRACKS ARE MAGNETIC  
ALTITUDES IN FEET  
HEIGHTS IN METRES  
ELEVATIONS IN METRES AND FEET  
DISTANCES IN KILOMETRES

DIST to RW05R	12.0	10.0	8.0	6.0	4.0	2.0
HEIGHT/ALTITUDE	(580)/2140'	(485)/1830'	(395)/1520'	(300)/1210'	(205)/900'	(110)/590'



**MISSED APPROACH**  
Climb on track 054° to (300)/1210' or above, turn LEFT climbing to (600)/2200' or above to HH110, then to HH009 climbing to (900)/3180' or above according to chart or by ATS unit instruction.

OCA(H)		A	B	C	D						
Straight-in Approach	CAT I	130(60) 427'	130(60) 427'	130(60) 427'	130(60) 427'	<b>1</b> TRANSITION LEVEL: - FL060 when QFE is 753mm mercury column (1004 hPa) or above; - FL070 when QFE is less than 753mm mercury column (1004 hPa).  <b>NOTE</b> Visual manoeuvring is PROHIBITED.					
	GROUND SPEED	km/h	150	180	210	240	270	300	330	360	390
	RATE OF DESCENT	kt	81	97	113	130	146	162	178	194	211
		m/s	2.0	2.4	2.7	3.1	3.5	3.9	4.3	4.7	5.1
		ft/min	385	463	540	617	694	771	848	925	1002