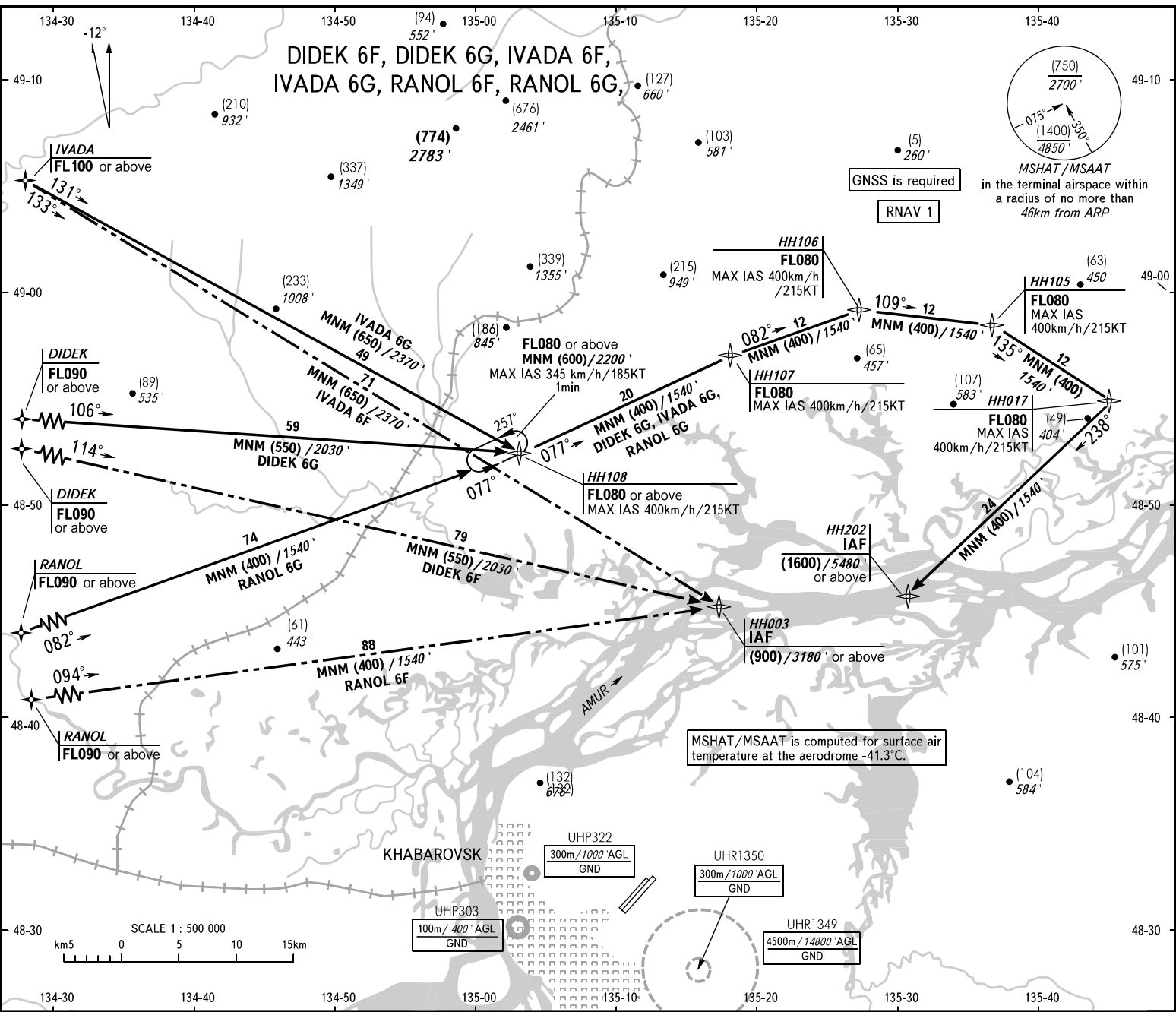


STANDARD ARRIVAL CHART  
INSTRUMENT (STAR) - ICAO

TRANSITION  
LEVEL: **1**

KHABAROVSK, RUSSIA  
NOV  
RNAV RWY 23R, 23L



MSHAT/MSAAAT  
in the terminal airspace within  
a radius of no more than  
46km from ARP

GNSS is required  
RNAV 1

MSHAT/MSAAAT is computed for surface air  
temperature at the aerodrome -41.3°C.

**1** TRANSITION LEVEL:  
- FLO60 when QFE is 753mm (1004 hPa) mercury column or above;  
- FLO70 when QFE is less than 753mm (1004 hPa) mercury column.

APPROACH  
RADAR  
PRECISION  
GROUND  
125.200  
120.300  
119.300  
121.800 BY ATC

BEARINGS AND TRACKS ARE MAGNETIC  
ALTITUDES IN FEET  
HEIGHTS IN METRES  
ELEVATIONS IN METRES AND FEET  
DISTANCES IN KILOMETRES

Alt set: -QFE(QNH on req);  
-mm(hPa on req).

Federal Air Transport Agency