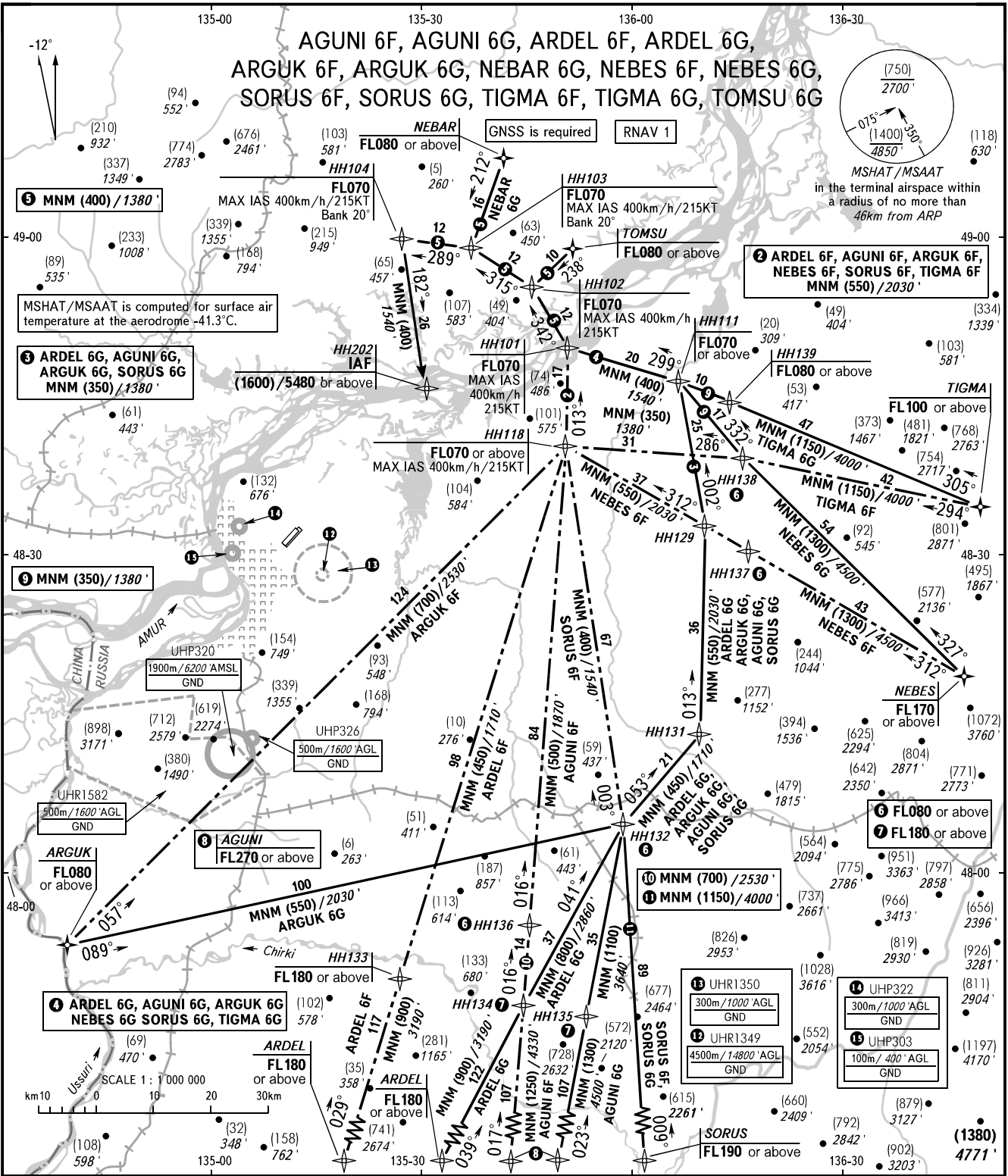


STANDARD ARRIVAL CHART  
INSTRUMENT (STAR) - ICAO

TRANSITION  
LEVEL : **1**

KHABAROVSK, RUSSIA  
NOVY  
RNAV RWY 23R, 23L



APPROACH	125.200
RADAR	120.300
PRECISION	119.300
GROUND	121.800 By ATC

**1** TRANSITION LEVEL:  
- FL060 when QFE is 753mm (1004 hPa) mercury column or above;  
- FL070 when QFE is less than 753mm (1004 hPa) mercury column.

BEARINGS AND TRACKS ARE MAGNETIC  
ALTITUDES IN FEET  
HEIGHTS IN METRES  
ELEVATIONS IN METRES AND FEET  
DISTANCES IN KILOMETRES

Alt set: -QFE(QNH on req);  
-mm(hPa on req).

CHANGE: COM, MSHAT/MSAAT