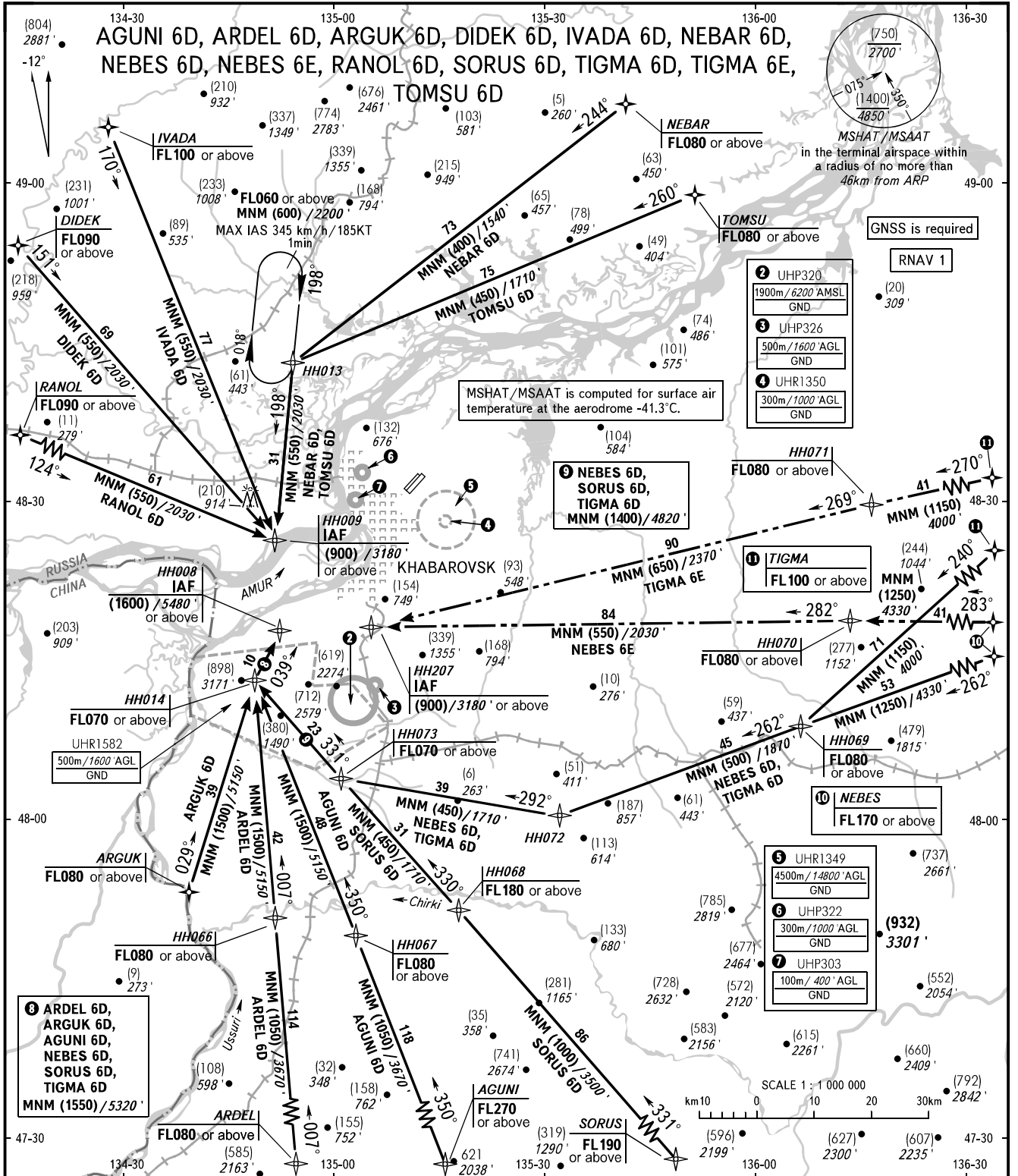


STANDARD ARRIVAL CHART
INSTRUMENT (STAR) - ICAO

TRANSITION
LEVEL: **1**

KHABAROVSK, RUSSIA
NOVY
RNAV RWY 05L, 05R



APPROACH	125.200	1 TRANSITION LEVEL: - FL060 when QFE is 753mm (1004 hPa) mercury column or above; - FL070 when QFE is less than 753mm (1004 hPa) mercury column.
RADAR	120.300	
PRECISION	119.300	
GROUND	121.800 By ATC	
BEARINGS AND TRACKS ARE MAGNETIC ALTITUDES IN FEET HEIGHTS IN METRES ELEVATIONS IN METRES AND FEET DISTANCES IN KILOMETRES		Alt set: -QFE(QNH on req); -mm(hPa on req).