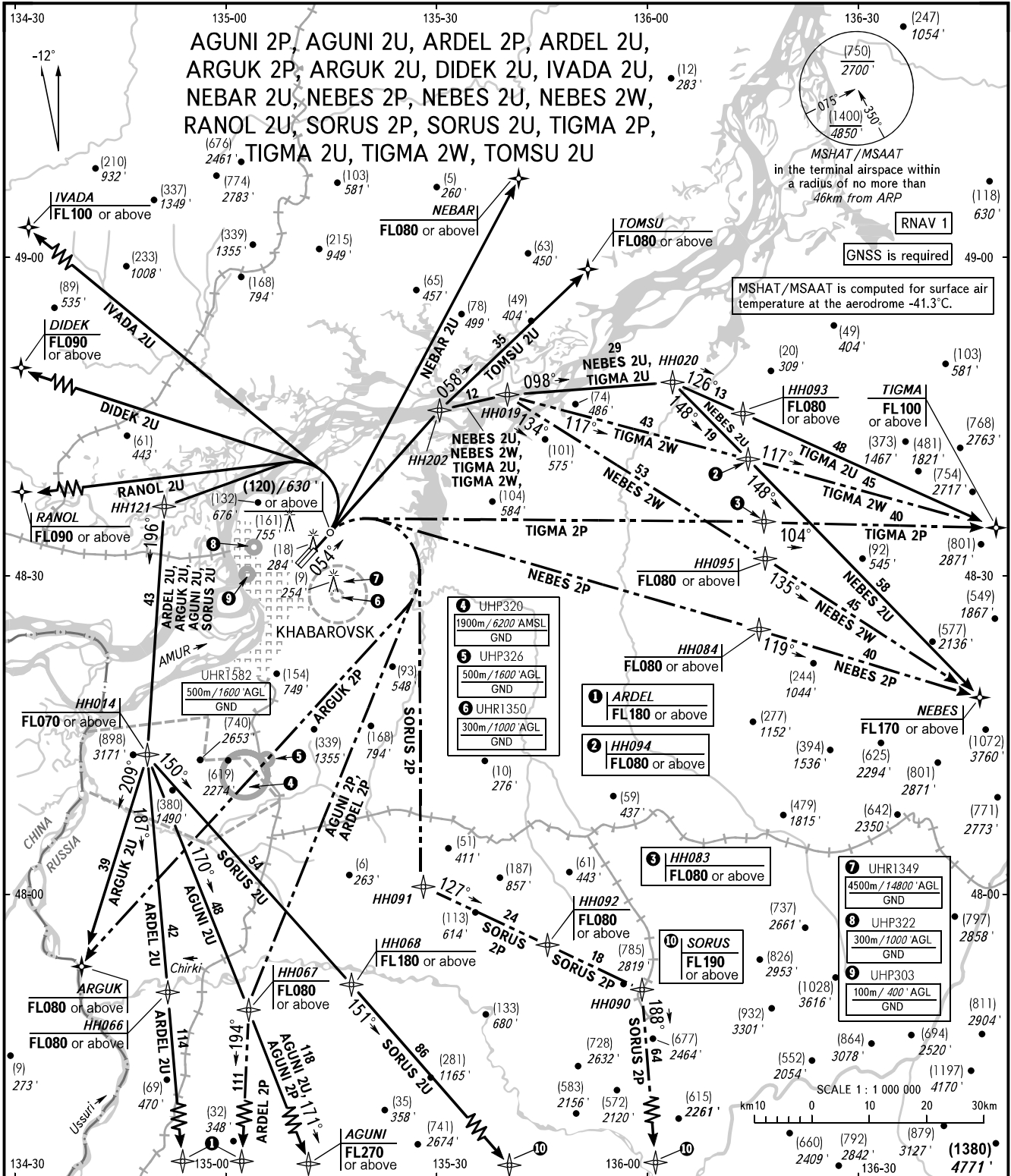


STANDARD DEPARTURE CHART
INSTRUMENT (SID) - ICAO

TRANSITION HGT : (1400)
TRANSITION ALT : 4850'

KHABAROVSK, RUSSIA
NOVY
RNAV RWY 05L, 05R



CHANGE: COM, MSHAT/MSAAT

START 119.300
GROUND 121.800 By ATC
RADAR 120.300
APPROACH 125.200

WARNING:
1. The minimum climb gradients required due to the airspace structure:
- 3.4% up to FL150 for SID IVADA 2U, when joining AWY A333;
- 4.1% up to FL190 for SID IVADA 2U, when joining AWY B912;
- 4.4% up to FL200 for SID IVADA 2U, when joining AWY B152.
2. Turn before passing DER is PROHIBITED.
3. There are close-in obstacles (trees) located to the left and to the right of take-off heading at DIST 112-224m from DER (RWY 05R) with MAX ELEV (18)/289'.

BEARINGS AND TRACKS ARE MAGNETIC
ALTITUDES IN FEET
HEIGHTS IN METRES
ELEVATIONS IN METRES AND FEET
DISTANCES IN KILOMETRES

Alt set: -QFE(QNH on req);
-mm(hPa on req).